

TLC ENGINEERING CONSULTANTS

COMPANY PROFILE

Consultants & Engineers
Complete engineering solution



www.tlce.co.in

2023



To

Date:

Sub : Enlistment for Design, Detail Engineering & site supervision.


Dear Sir.

We would like to take the privilege of introducing ourselves as a team of highly qualified and experienced architects, engineers, planners. We have the benefit of ready access to state-of-the-art technology for improving design. With the requisite technological backup, we assure you faster better and cost-effective services. We are an organization having a team of Engineers and Draftsmen with the proven experience in the field of Structural, Civil, Material Handling, Piping.

We are therefore, pleased to enclose our organizational profile, list of personnel etc. for your kind perusal and necessary action.

We further add that we shall provide the best services with most competitive rates. We therefore, request you to kindly empanel us with your esteemed organization for all coming projects. Thanking you and assuring you of our best services.

Yours Faithfully,

For TLC ENGINEERING CONSULTANTS

Proprietor

For TLC ENGINEERING CONSULTANTS.
(ANUP KUMAR DUTTA)

Please Note that, we can prepare structural and civil drawings in 3d software.

We have 4 Tekla licenses, 3 Revit licenses and 19 dwg software licenses. We have 2 staad licenses also.

Please note that we also provide site inspection and supervision services as & when required.





ENGINEERING SPECIALIZATION AND SERVICES

- Architectural drawings (Residential, Commercial, Industrial etc.);
- Civil and Structural design & detail Engineering, inclusive of special & difficult types of structures;
- Detail BBS of civil drawings;
- GA drawings and fabrication drawings;
- Crushing & Screening Plants including material handling system (structural & civil);
- Conveyor –technological structure, civil and main supporting structure.
- Self-supported Chimney / Stack with foundation;
- Heavy / Light Machine Foundations;
- Underground and overhead water tank (RCC & steel);
- ETP;
- RCC and steel tunnel;
- Weigh bridge;
- Steel silo;
- Hoppers, steel bunkers;
- Substation Switchyard;
- Piping drawings (GA & Isometric) with stress analysis and pressure drop calculation.
- Ducting layout, GA and fabrication drawings with flexibility analysis;





LIST OF KEY PROFESSIONALS ATTACHED TO OUR ORGANIZATION

- | | |
|----------------------------|--|
| 1. Mr. Anup Kumar Dutta | B.E. (Civil-IIEST, Shibpur), 30 years experience in various type of Civil and Structural & Material Handling Job. |
| 2. Mr. Tarun Bhowmik | 26 Years Experience in Structural Fabrication drawing-checker |
| 3. Mr. Saikat Vaduri | B. TECH (Mechanical Engineering) 18 years experience In Piping job, Mechanical jobs, project management etc.. |
| 4. Mr. Ananyo Dutta | M.Tech(structure-from IIT) 4 Year Experience in civil & structural Job |
| 5. Mr. Bapi Banerjee | Diploma in Civil Engineering, 27 years of experience in different field of civil Engineering, Construction, Quality, project management etc... |
| 6. Mr. Bholanath Paramanik | Diploma, 4 Years Experience in structural & Mechanical |
| 7. Mr. Souvik Dutta | Diploma, 4 Years Experience in structural & Mechanical |
| 8. Mr. Kopil Bej | Draftsman, 3 Years Experience in civil |
| 9. Bijoy Chand Roy | Draftsman, 3 Years Experience in structural & Mechanical |
| 10. Mr. Rana Dhank | Draftsman, 2 Years Experience in structural |
| 11. Mr. Arpan Das | Diploma in Civil, 4 Year Experience in structural |
| 12. Mr. Biswajit Paramanik | LBS-1, Civil Engineer. |
| 13. Mr. Rajarsi Das | Geo technical Engineer, M. Tech in Geotech. |
| 14. Mrs. Pritha Poddar | Architect (B. Arch) |





LIST OF ADDITIONAL PROFESSIONALS ATTACHED TO OUR ORGANIZATION

01. Mr. Dip Kumar Ghosh	Draftsman, Structural
02. Mr. Akash Mal	Draftsman, Structural
03. Mr. Subhajit Bej	Draftsman, civil
04. Mr. Bhaskar Das	Draftsman, civil
05. Mr. Gurushankar Dey	Draftsman, civil
06. Mr. Animesh Dey	Draftsman, civil
07. Mr. Suvodip Rakshit	Draftsman, civil
08. Mr. Shibu Ram Bhunia	Draftsman, civil





GENERAL PARTICULARS

- | | |
|----------------------------|---|
| 1. Name of Organization | TLC- ENGINEERING CONSULTANTS |
| 2. Address of Regd. office | 22, Vivekananda Park (Vivekananda College Road)

Kolkata- 700 063 |
| 3. Mobile Nos. | +91 9432273467, 9432014370 |
| 4. E-mail | technicalluminay@gmail.com
<u>bobdutta@yahoo.com</u>
technicalluminay@tlce.co.in
Website: www.tlce.co.in |
| 5. Name of the Proprietor | Anup Kumar Dutta |
| 6. Name of the Bankers | United Bank of India and AXIS BANK

B.C.P.M.T. Extn. Counter, A-81, C.R. Park, N.D.-19 and
AXIS BANK, 79/69, DIAMOND HARBOUR ROAD, BEHALA
CHOWRASTA, KOLKATA. |
| 7. Name of the Auditors. | M/s. Manas & Associates.
31, Selimpur Road, Kolkata-31 |
| 8. Branch Office. | Bijwasan, 402, Cartor Puri Road (Shamshan Ghat Road), New Delhi- 61

Mobile: +91 9432273467 |
| 9. Year of establishment. | December 2005. |



**LIST OF MAJOR JOB SUCCESSFULLY COMPLETED
BY M/S. TLC ENGINEERING CONSULTANTS,**

LIST OF MAJOR JOBS, SUCCESSFULLY COMPLETED					
SL. No.	NAME OF THE PROJECT	CLIENT	APPROVAL AUTHORITY	TLCE'S RESPONSIBILITY	TYPE OF JOB
	Empire Industrial Equipment				
1	INSTALLATION OF GUILLOTINE SHEAR (Pkg. 7)	Empire Industrial Equipment	CET	DESIGN & DETAIL ENGINEERING OF CIVIL , STRUCTUARAL , PIPING AND ISOMETRIC ETC	MAHINE FOUNDATION, PIPING, HYD. ROOM, PUMP HOUSE, ECR-14 ETC..
2	PLATE GRINDING MACHINE	Empire Industrial Equipment	SAIL - CENTER FOR ENGINEERING & TECHNOLOGY	DESIGN & DETAIL ENGINEERING OF CIVIL	MAHINE FOUNDATION
3	DESIGN, SUPPLY, ERECTION, TESTING & COMMISSIONING OF MOTOR BLOWERS (2Nos) FOR COPPER CONVERTING OPERATIONS.	Empire Industrial Equipment	HINDUSTAN COPPER LTD., GHATSILA	DESIGN & DETAIL ENGINEERING OF CIVIL	BLOWER FOUNDATION
4	REPLACEMENT OF HYDRAULIC SYSTEM OF TANDEM MILL-1, IN CRM, BSL	Empire Industrial Equipment	YUKEN INDIA LIMITED , BANGALORE	DESIGN & DETAIL ENGINEERING OF CIVIL	FOUNDATION FOR HIGH PRESSURE TANK
5	REPLACEMENT OF HYDRAULIC SYSTEM OF TANDEM MILL-1, IN CRM, BSL	Empire Industrial Equipment	YUKEN INDIA LIMITED , BANGALORE	DESIGN & DETAIL ENGINEERING OF CIVIL	ARCHITECTURAL G.A OF PUMP HOUSE
6	UPGRADATION (PHASE-I) OF CCD GAS BOOSTERS(Turbo Compressors)-(PACKAGE GROUP-IV)	Empire Industrial Equipment	MECON LIMITED	DESIGN & DETAIL ENGINEERING OF CIVIL	ANTISURGE & RECIRCULATION PIPING
7	INSTALLATION OF ADDL. HEAT TREATMENT FACILITIES (Pkg-III)	Empire Industrial Equipment	SAIL - CENTER OF ENGINEERING & TECHNOLOGY	DESIGN & DETAIL ENGINEERING OF CIVIL	CHIMNEY FOR AUSTENISING FURNACE
	GIRIDIH				
1	ALUMINIUM STRIP & FOIL PLANT. OF M/S.SHREE VENKATESHWARA ELECTROCAST PVT.LTD. GIRIDIH	M/S.SHREE VENKATESHWARA ELECTROCAST PVT.LTD	M/S.SHREE VENKATESHWARA ELECTROCAST PVT.LTD	SURVEY, SOIL TEST, DESIGN AND DETAIL ENGINEERING OF TOTAL STRIP & FOIL PLANT INCLUDING MACHINE FOUNDATIONS, PIPINGS, ETC....	BUILDINGS, SHED, EQUIPMENT SUPPORTING STRUCTURES, UNDER GROUND TANKS, ROADS, DRAINS, FOUNDATIONS, PIPELINES, PUMP HOUSE, ETC....
	HUTNI-INDIA (TEKNOLINK)				
1	NMDC LIMITED, 3.0 MTPA INTEGRATED STEEL PLANT (NISP), NAGARNAR, CHHATTISGARH (BPP & ETP Complex - PKG.03), MECON LIMITED	M/s.- TEKNOLINK ENTERPRISES;	MECON LIMITED	DESIGN AND DETAIL ENGINEERING OF BUILDINGS, EQUIPMENT SUPPORTING STRUCTURES, UNDER GROUND TANKS ETC...FOR ETP	BUILDINGS, EQUIPMENT SUPPORTING STRUCTURES, UNDER GROUND TANKS ETC...FOR ETP
2	NMDC LIMITED, 3.0 MTPA INTEGRATED STEEL PLANT (NISP), NAGARNAR, CHHATTISGARH (BPP & ETP Complex - PKG.03), MECON LIMITED	M/s.- TEKNOLINK ENTERPRISES;	MECON LIMITED	DESIGN AND DETAIL ENGINEERING OF BUILDINGS, EQUIPMENT SUPPORTING STRUCTURES, UNDER GROUND TANKS ETC...FOR SRP	BUILDINGS, EQUIPMENT SUPPORTING STRUCTURES, UNDER GROUND TANKS ETC...FOR SRP
3	NMDC LIMITED, 3.0 MTPA INTEGRATED STEEL PLANT (NISP), NAGARNAR, CHHATTISGARH (BPP & ETP Complex - PKG.03), MECON LIMITED	M/s.- TEKNOLINK ENTERPRISES;	MECON LIMITED	DESIGN AND DETAIL ENGINEERING OF BUILDINGS, EQUIPMENT SUPPORTING STRUCTURES, UNDER GROUND TANKS ETC...FOR LSP	BUILDINGS, EQUIPMENT SUPPORTING STRUCTURES, UNDER GROUND TANKS ETC...FOR LSP
4	NMDC LIMITED, 3.0 MTPA INTEGRATED STEEL PLANT (NISP), NAGARNAR, CHHATTISGARH (BPP & ETP Complex - PKG.03), MECON LIMITED	M/s.- TEKNOLINK ENTERPRISES;	MECON LIMITED	DESIGN AND DETAIL ENGINEERING OF BUILDINGS, EQUIPMENT SUPPORTING STRUCTURES, UNDER GROUND TANKS ETC...FOR SCP	BUILDINGS, EQUIPMENT SUPPORTING STRUCTURES, UNDER GROUND TANKS ETC...FOR SCP
5	NMDC LIMITED, 3.0 MTPA INTEGRATED STEEL PLANT (NISP), NAGARNAR, CHHATTISGARH (BPP & ETP Complex - PKG.03), MECON LIMITED	M/s.- TEKNOLINK ENTERPRISES;	MECON LIMITED	DESIGN AND DETAIL ENGINEERING OF BUILDINGS, EQUIPMENT SUPPORTING STRUCTURES, UNDER GROUND TANKS ETC...FOR FCP	BUILDINGS, EQUIPMENT SUPPORTING STRUCTURES, UNDER GROUND TANKS ETC...FOR FCP
6	PROJECT INSTALLATION OF SINTER PLANT-II(MAIN PACKAGE)	M/s.- TEKNOLINK ENTERPRISES;	STEEL AUTHORITY OF INDIA LTD. BOKARO STEEL PLANT-II / MECON LIMITED	DESIGN AND DETAIL ENGINEERING OF 100M. RCC OF WASTE GAS STACK.	100M. RCC OF WASTE GAS STACK.
7	ROURKELA STEEL PLANT AUTHORITY OF INDIA LTD. 1 x 4060m STEEL ROURKELA, ORISSA BLAST FURNACE COMPLEX	M/s.- TEKNOLINK ENTERPRISES;	MECON LIMITED	DETAIL ENGINEERING OF STRUCTURAL	MODIFICATION OF BEND PULLEY ARRANGEMENT & DETAIL OF BEND PULLEY FRAME AND DETAIL OF ROLLER FOR MC CONVEYOR
	SMS DEMAG				
1	BHUSHAN STEEL & STRIPS LTD., MERAMANDALI	SMS DEMAG (SMS-1)	BHUSHAN	DESIGN & DETAIL ENGINEERING OF DUCTING JOBS	DUCTING JOBS
2	175T Degassing unit for JSW steel structures- Vacuum system.	SMS DAMAG PVT. LTD. (SMS-2)	CET	detailed engineering & dwgs for 175T Degassing unit for JSW steel structures- Vacuum system.	PLATFORM AND SUPPORTING STRUCTURE FOR VACUUM SYSTEM.
3	INSTALLATION OF HOT METAL DESULPHURIZATION UNIT(DESULPHURIZATION UNIT),	SMS DEMAG (SMS-3)	CET	DESIGN & DETAIL ENGINEERING OF STRUCTUARAL JOBS	BAG HOUSE, DUCT ETC..
4	ESSAR STEEL (HAZIRA) LTD. ESSAR TECHNOLOGY CENTRE - HAZIRA	SMS DEMAG (SMS-4)	MECON LIMITED	DESIGN & DETAIL ENGINEERING OF STRUCTURAL & DUCTING JOBS	PRIMARY DUCT, SECONDARY DUCT,LF-2 DUCT ETC..
5	TISCO LD#1 FAFA SYSTEM	SMS INDIA PVT. LTD. (SMS-5)	M. N. DASTUR & COMPANY (P) LTD	DESIGN & DETAIL ENGINEERING OF STRUCTUARAL JOBS	LIME COATING FACILITY,ARGON RINSING STATION ETC..

LIST OF MAJOR JOBS, SUCCESSFULLY COMPLETED					
SL. No.	NAME OF THE PROJECT	CLIENT	APPROVAL AUTHORITY	TLCE'S RESPONSIBILITY	TYPE OF JOB
6	BHUSHAN STEEL & STRIPS LTD MERAMANDALI	SMS DAMAG (SMS-6)	BHUSHAN	DETAIL ENGINEERING OF DUCTING JOBS	DUCT SUPPORTING STRUCTURE
7	BOF SHOP 2.5 MT FOR SAIL, IISCO STEEL PLANT, BURNPUR, INDIA	SMS INDIA PVT. LTD. (SMS-7)	MECON LIMITED	DESIGN & DETAIL ENGINEERING OF STRUCTURAL JOBS & CIVIL ASSIGNMENT DWGS.	PLATFORM AND SUPPORTING STRUCTURE FOR ARGON FINISH STATION LIME COATING FACILITY, SLIDE GATE REPAIR STAND ETC
8	RASHTRIYA ISPAT NIGAM LIMITED. VISAKHAPATNAM STEEL PLANT 6.3MTPA EXPANSION PROJECT	SMS DEMAG (SMS-8)	MECON LIMITED & M. N. DASTUR & COMPANY (P) LTD	DETAIL ENGINEERING OF STRUCTURAL JOBS (DOG HOUSE)	CHARGING SIDE WALL, TAPPING SIDE WALL, DRIVE SIDE WALL (DOG HOUSE) ETC..
9	SECONDARY REFINING UNITS FOR SAIL/ IISCO STEEL PLANT AT BURNPUR, INDIA	SMS INDIA PVT. LTD. (SMS-9)	MECON LIMITED	DESIGN & DETAIL ENGINEERING OF STRUCTURAL JOBS FOR FAFA AND LF (LHF#1 & LHF#2)	EQUIPMENT SUPPORTING STRUCTURE, BUNKERS/ SILOS ETC...
10	TATA STEEL LTD.(JAMSHEDPUR)	SMS SIEMAG (SMS-10)	M. N. DASTUR & COMPANY (P) LTD	DESIGN & DETAIL ENGINEERING OF STRUCTURAL JOBS FOR FAFA AND TWIN LADDLE FURNACE (LHF#1 & LHF#2)	EQUIPMENT SUPPORTING STRUCTURE, BUNKERS/ SILOS ETC...
11	ASP DURGAPUR	SMS SIEMAG (SMS-11)	M. N. DASTUR & COMPANY (P) LTD	DESIGN & DETAIL ENGINEERING OF STRUCTURAL JOBS FOR FAFA AND LADDLE FURNACE (LHF#2)	EQUIPMENT SUPPORTING STRUCTURE, BUNKERS/ SILOS ETC...
12	URALMASH-EAF	SMS SIEMAG (SMS-12)		ONLY DESIGN OF FAFA STRUCTURE WITH BUNKERS	EQUIPMENT SUPPORTING STRUCTURE, BUNKERS ETC...
13	STEEL & POWER LIMITED, ANGUL, ORISSA, INDIA, 4 x 250t / 200 MVA EAF MELTSHOP, DUPLEX RH UNIT #1 and FES #1	SMS SIEMAG (SMS-13)	MECON	ONLY DESIGN OF EQUIPMENT SUPPORTING STRUCTURE WITH BUNKERS	EQUIPMENT SUPPORTING STRUCTURE,
14	Kamineni Steel & Power India Pvt. Ltd. Hyderabad, India	SMS SIEMAG (SMS-14)		DESIGN & DETAIL ENGINEERING OF STRUCTURAL JOBS FOR FAFA AND LADDLE FURNACE	EQUIPMENT SUPPORTING STRUCTURE, BUNKERS ETC...
15	TATA STEEL LTD. KALINGANAGAR	SMS SIEMAG (SMS-15)	M. N. DASTUR & COMPANY (P) LTD	DESIGN & DETAIL ENGINEERING OF STRUCTURAL JOBS FOR MAIN BUILDING AND ALLOY BUILDING	EQUIPMENT SUPPORTING STRUCTURE, BUNKERS ETC...
16	TATA STEEL LTD. KALINGANAGAR-TATA BOF	SMS SIEMAG (SMS-16)	M. N. DASTUR & COMPANY (P) LTD	DESIGN & DETAIL ENGINEERING OF STRUCTURAL JOBS FOR PLATFORMS	PLATFORM AND SUPPORTING STRUCTURE
17	UPGRADATION OF FES SMS-II FES FOR AUXILIARY SYSTEM	SMS SIEMAG (SMS-17)	JINDAL STEEL & POWER LIMITED RAIGARH, CHHATTISGARH, INDIA	DESIGN & DETAIL ENGINEERING OF DUCT SUPPORTING STRUCTURE	DUCT SUPPORTING STRUCTURE
18	2x310 t BOF CONVERTER TORPEDO RELADLING PIT	SMS SIEMAG (SMS-18)	M. N. DASTUR & COMPANY (P) LTD	DESIGN & DETAIL ENGINEERING OF STRUCTURAL JOBS FOR EQUIPMENT SUPPORTING PLATFORMS	EQUIPMENT SUPPORTING PLATFORM
19	GAS CLEANING PLANT PRIMARY ID FAN HOUSE	SMS SIEMAG (SMS-19)	JINDAL STEEL & POWER LIMITED ORISSA, ANGUL, INDIA	DESIGN & DETAIL ENGINEERING OF STRUCTURAL JOBS FOR ID FAN HOUSE	ID FAN HOUSE
20	FUME EXTRACTION SYSTEM # 1 DUST SILO	SMS SIEMAG (SMS-19A)	JINDAL STEEL & POWER LIMITED ORISSA, ANGUL, INDIA	DESIGN & DETAIL ENGINEERING OF SILO & SILO SUPPORTING STRUCTURE	SILO & SILO SUPPORTING STRUCTURE
21	TATA STEEL LTD. KALINGANAGAR-TATA BOF	SMS SIEMAG (SMS-20)	M. N. DASTUR & COMPANY (P) LTD	DESIGN & DETAIL ENGINEERING OF STRUCTURAL JOBS FOR PLATFORMS	EQUIPMENT SUPPORTING STRUCTURE, BUNKERS/ SILOS ETC...
	SOMANI KUTTNER INDIA PVT. LTD.				
1	ROURKELA STEEL PLANT, ROURKELA, ORISSA, 4.2 MTPA CRUDE STEEL EXPANSION	SOMANI KUTTNER INDIA PVT. LTD.	MECON LIMITED	DESIGN & DETAIL ENGINEERING OF STRUCTURAL & DUCTING JOBS	BLAST FURNACE GA AND MIXED MAIN GAS DUCTS AND SUPPORTING STRUCTURE.
2	TATA STEEL LIMITED. KALINGANAGAR PROJECT, ODISHA	SOMANI KUTTNER INDIA PVT. LTD.	MECON LIMITED	DESIGN & DETAIL ENGINEERING OF STRUCTURAL & DUCTING JOBS	Design and Engineering for Duct & Chutes for PCI System, Kalinganagar Project, Tata Steel.
3	'F' BLAST FURNACE RELINING 2012, COAL INJECTION SYSTEM	SOMANI KUTTNER INDIA PVT. LTD.	M. N. DASTUR & COMPANY (P) LTD	DESIGN & DETAIL ENGINEERING OF STRUCTURAL JOBS	Design and Engineering of Coal Injection System supporting structure.
4	DESULPHURISATION STEEL PLANT	SOMANI KUTTNER INDIA PVT. LTD.	M. N. DASTUR & COMPANY (P) LTD	DESIGN & DETAIL ENGINEERING OF STRUCTURAL JOBS	Design and Engineering of DISPENSER BUILDING
5	JSPL ANGUL BF NO.1 (4554 M3)	JINDAL STEEL & POWER LIMITED, ANGUL, ODISHA	LARSEN & TOUBRO LIMITED, KOLKATA	CAESAR ANALYSIS OF PIPING / DUCTING DESIGN AND DETAIL OF PIPE LINE / DUCTING	Design and detail engineering of structure, pipe analysis.
6	3.0 MTPA EXPANSION PROJECT	SOMANI KUTTNER INDIA PVT. LTD.	TATA STEEL	DESIGN & DETAIL OF DEDUSTING OF PRIMARY & SECONDARY CRUSHER	Design and detail engineering of structure, ducting.
	TATA STEEL -TGS				
1	TATA STEEL, KALINGANAGAR PROJECT, ODISHA, H.S.M (AREA-1)	M/S. Tata Steel Ltd	M. N. DASTUR & COMPANY (P) LTD	DETAIL ENGINEERING OF STRUCTURAL JOBS	STEEL BUILDING
2	TATA STEEL, KALINGANAGAR PROJECT, ODISHA, CASTER & CONVATER	M/S. Tata Steel Ltd	M. N. DASTUR & COMPANY (P) LTD	DETAIL ENGINEERING OF STRUCTURAL JOBS	STEEL BUILDING
3	TATA STEEL, KALINGANAGAR PROJECT, ODISHA, LCSS	M/S. Tata Steel Ltd	M. N. DASTUR & COMPANY (P) LTD	DETAIL ENGINEERING OF STRUCTURAL JOBS	STEEL BUILDING
4	TATA STEEL, KALINGANAGAR PROJECT, ODISHA, ELEVATOR	M/S. Tata Steel Ltd	M. N. DASTUR & COMPANY (P) LTD	DETAIL ENGINEERING OF STRUCTURAL JOBS	STEEL BUILDING
5	TATA STEEL, KALINGANAGAR PROJECT, ODISHA, HMDP ECR	M/S. Tata Steel Ltd	M. N. DASTUR & COMPANY (P) LTD	DETAIL ENGINEERING OF STRUCTURAL JOBS	STEEL BUILDING

LIST OF MAJOR JOBS, SUCCESSFULLY COMPLETED					
SL. No.	NAME OF THE PROJECT	CLIENT	APPROVAL AUTHORITY	TLCE'S RESPONSIBILITY	TYPE OF JOB
6	TATA STEEL, KALINGANAGAR PROJECT, ODISHA, GAS BOOSTING STATION, GAS MIXING STATION & PROPANE STORAGE	M/S. Tata Steel Ltd	M. N. DASTUR & COMPANY (P) LTD	DETAIL ENGINEERING OF STRUCTURAL JOBS	STEEL BUILDING
7	TATA STEEL, KALINGANAGAR PROJECT, ODISHA, RMHS_JUNCTION HOUSE_FJ-1, FJ-2, FJ-3, FJ-5 & FJ-6	M/S. Tata Steel Ltd	M. N. DASTUR & COMPANY (P) LTD	DETAIL ENGINEERING OF STRUCTURAL JOBS	STEEL BUILDING
SHRIRAM EPC LTD. INDIA (KOLKATA)					
1	IISCO STEEL PLANT, REBUILDING OF COKE OVEN BATTERY NO.10 (BY PRODUCT PLANT)	SHRIRAM EPC LTD. INDIA (KOLKATA)	MECON LIMITED	DESIGN & DETAIL ENGINEERING OF CIVIL JOBS	SALT HOUSE
2	IISCO STEEL PLANT, REBUILDING OF COKE OVEN BATTERY NO.10 (BY PRODUCT PLANT)	SHRIRAM EPC LTD. KOLKATA, INDIA	MECON LIMITED	DETAIL ENGINEERING OF EQUIPMENTS	PRIMARY GAS COOLER ,OIL COOLER, HEAT EXCHANGER, BENZOL SCRUBBER ETC...
3	IISCO STEEL PLANT, REBUILDING OF COKE OVEN BATTERY NO.10 (BY PRODUCT PLANT)	SHRIRAM EPC LTD. KOLKATA, INDIA	MECON LIMITED	DESIGN & DETAIL ENGINEERING OF STRUCTURAL JOBS	10T HOT CCRANE SUPPORTING STRUCTURE, PLATFORM AND STAIR FOR BENZOL SCRUBBER ETC
ALLMINERAL ASIA PVT. LTD.					
1	180 TPH COAL DESHALING PLANT	M/s. SHREE GANESH METALIKS LTD.	ALLMINERAL ASIA PVT. LTD.	DESIGN & DETAIL ENGINEERING OF CIVIL & STRUCTUARAL JOBS	SCREEN HOUSE, GANTRY, TRESTLE, TAKE UP, TRANSFER HOUSE ETC...
2	200 TPH IRON ORE BENEFICIATION PLANT	M/s. PRO MINERALS PVT. LTD.	ALLMINERAL ASIA PVT. LTD.	DESIGN & DETAIL ENGINEERING OF CIVIL & STRUCTUARAL JOBS	BUNKER, MCC BUILDING, TRACK TIPPLER HOPPER SUPPORTING STRUCTURE, SCREEN HOUSE, GANTRY, TRESTLE, TAKE UP, TRANSFER HOUSE, PIPE & CABLE SUPPORTING STRUCTURE ETC...
3	50 TPH IRON ORE PROCESSING PLANT	M/s.ORISSA MANGANESE & MINERALS LTD.	ALLMINERAL ASIA PVT. LTD.	DESIGN & DETAIL ENGINEERING OF STRUCTUARAL JOB	JIG BUILDING
4	2 X 200 TPH LIME STONE WASHING PLANT	M/s. MADRAS CEMENTS LIMITED. (ALATHIYUR WORKS)	ALLMINERAL ASIA PVT. LTD.	DESIGN & DETAIL ENGINEERING OF CIVIL JOB	MCC BUILDING
5	300 TPH IRON ORE BENEFICIATION PLANT	M/s. SHRI BAJRANG POWER & ISPAT LTD.	ALLMINERAL ASIA PVT. LTD.	DESIGN & DETAIL ENGINEERING OF CIVIL & STRUCTUARAL JOBS	SCRUBBER BUILDING, ECR BUILDING, GROUNG HOPPER, SHED, GANTRY, TRESTLE, TAKE UP, TRANSFER HOUSE ETC...
AREVA-M/S. Schneider Electric Infrastructure Ltd					
1	ESSAR CONSTRUCTIONS (INDIA)LTD., MUMBAI- COMMISSIONING OF 132KV SWITCHYARD	AREVA T&D India Limited	ESSAR	DESIGN & DETAIL ENGINEERING OF STRUCTURAL & CIVIL JOBS	SWITCH YARD EQUIPMENT SUPPORTING STRUCTURE & FOUNDATION
2	BRAMHMAPUTRA CRACKER AND POLYMER LIMITED, 132KV SWITCHYARD AT DIBRUGARH ASSAM	AREVA T&D India Limited	ENGINNERS INDISA LIMITED	DESIGN & DETAIL ENGINEERING OF STRUCTURAL & CIVIL JOBS	SWITCH YARD EQUIPMENT SUPPORTING STRUCTURE & FOUNDATION
3	MEGHALAYA ENERGY CORPORATION LTD. SHILLONG. 132KV SWITCHYARD AT NEW UMTRU HYDRO ELECTRIC PROJECT (2X 20MW)	AREVA T&D India Limited	MEGHALAYA ENERGY CORPORATION LTD	DESIGN & DETAIL ENGINEERING OF STRUCTURAL & CIVIL JOBS	SWITCH YARD EQUIPMENT SUPPORTING STRUCTURE & FOUNDATION
4	55000 TPA FeCr & 400000 TPA Reber mill at Gopalpor, ODHISHA	AREVA T&D India Limited	TAT CONSULTING ENGINEERS LIMITED	DESIGN & DETAIL ENGINEERING OF STRUCTURAL & CIVIL JOBS	SWITCH YARD EQUIPMENT SUPPORTING STRUCTURE & FOUNDATION
NICCO CORPORATION LIMITED PROJECT DIVISION					
1	IISCO STEEL PLANT, REBUILDING OF COKE OVEN BATTERY NO: 10 (BY PRODUCT PLANT)	NICCO CORPORATION LIMITED PROJECT DIVISION	MECON LIMITED	DESIGN & DETAIL ENGINEERING OF CIVIL & STRUCTUARAL JOBS	JOB STATION, MCC ROOM, PIPE CABLE TRESTLE, CONTROL ROOM,DECANER, LIQUOR STORAGE TANK & TAR TANKPLATFORM FOR DECANTING TANK ETC
IMECO LIMITED					
1	UP GRADATION (PHASE-I) OF CCD - Knock out Pot, Condensate Seal Pot , Gas Mixing Tank & Interconnecting Pipelines & Storage facilities for Sulphuric Acid (Pkg Gr. II)	IMECO LIMITED	MECON LIMITED	DESIGN & DETAIL ENGINEERING OF CIVIL & STRUCTUARAL (PIPE TRESTLES)	PIPE SUPPORTING TRESTLES AND PLATFORMS
TLT ENGG.INDIA PVT.LTD.					
1	IISCO STEEL PLANT, BURNPUR, WEST BENGAL 2.5 MTPA NEW STREAM EXPANSION	TLT ENGG.INDIA PVT.LTD.	MECON LIMITED	DESIGN & DETAIL ENGINEERING OF PIPE LINE (CEZAR) & STRUCTURAL SUPPORT (BRIDGE TRESTLES)	PIPE SUPPORTING TRESTLES AND PLATFORMS
2	1x4 MW POWER PLANT CHANDRAPUR FERRO ALLOY PLANT, CHANDRAPUR - 442401.	TLT ENGG.INDIA PVT.LTD.	STEEL AUTHORITY OF INDIA LIMITED	CAESAR ANALYSIS OF PIPE LINE DESIGN AND DETAIL OF PIPE SUPPORTING STRUCTURE & BOOSTER HOUSE	SAF GAS BOOSTING STATION
3	CO GAS BOOSTING STATION WITH SECTIONAL VIEW	TLT ENGG.INDIA PVT.LTD.	M. N. DASTUR & COMPANY (P) LTD	DESIGN & DETAIL ENGINEERING OF CIVIL & STRUCTUARAL JOBS	TRESTLE , TOWER , STAIR , BOSSTER ETC....

LIST OF MAJOR JOBS, SUCCESSFULLY COMPLETED					
SL. No.	NAME OF THE PROJECT	CLIENT	APPROVAL AUTHORITY	TLCE'S RESPONSIBILITY	TYPE OF JOB
4	INSTALLATION OF NEW BOOSTER FAN AT GNBS FOR CRM-III	TLT ENGG.INDIA PVT.LTD.	TLT ENGG.INDIA PVT.LTD.	DESIGN & DETAIL ENGINEERING OF CIVIL & STRUCTURAL JOBS	TRESTLE , TOWER , STAIR , BOSSER ETC....
	SIEMENS LTD.				
1	Cement Grinding Unit at Lanka, Assam(CCIL)	SIEMENS LTD.	HOLTECH	DESIGN & DETAIL ENGINEERING OF CIVIL & STRUCTURAL JOBS	SWITCH YARD EQUIPMENT SUPPORTING STRUCTURE, FOUNDATION & MCC BUILDING
2	3000 TPD Clinkerisation Unit at Umrangshu, Assam(CCIL)	SIEMENS LTD.	HOLTECH	DESIGN & DETAIL ENGINEERING OF CIVIL & STRUCTURAL JOBS	SWITCH YARD EQUIPMENT SUPPORTING STRUCTURE, FOUNDATION & MCC BUILDING
3	3000 TPD Clinkerisation Unit at Umrangshu, Assam(LILO)	SIEMENS LTD.	HOLTECH	DESIGN & DETAIL ENGINEERING OF CIVIL & STRUCTURAL JOBS	SWITCH YARD EQUIPMENT SUPPORTING STRUCTURE, FOUNDATION & MCC BUILDING
4	EPCM SERVICES FOR 4.0 MTPA DCMP- JODA & NOAMUNDI MINES EXPANSION PROJECTS	SIEMENS LTD.	TATA CONSULTING ENGINEERS	DESIGN & DETAIL ENGINEERING OF CIVIL & STRUCTURAL JOBS	SWITCH YARD EQUIPMENT SUPPORTING STRUCTURE, FOUNDATION, PUMP HOUSE & MCC BUILDING
5	MAIN RECEIVING AND STEP-DOWN SUBSTATION (MRSS)-HINDALCO	SIEMENS LTD.	M. N. DASTUR & COMPANY (P) LTD	DESIGN & DETAIL ENGINEERING OF CIVIL & STRUCTURAL JOBS	EQUIPMENT STRUCTURE OF BPIT , CTT, ISOT, IVT ,LAT
6	40.5 M2 LINEAR SINTER PLANT	TATA METALIKS LIMITED, KHARAGPUR	TATA CONSULTING ENGINEERS LIMITED	DESIGN & DETAIL ENGINEERING OF CIVIL & STRUCTURAL JOBS	SWITCH YARD EQUIPMENT SUPPORTING STRUCTURE, FOUNDATION & MCC BUILDING
7	33/11KV SUB-STATION	SIEMENS LTD.	BHUSHAN STEEL LTD. 28/4, Site-IV, Sahibabad Industrial Area, Sahibabad, Distt. Ghaziabad U.P., INDIA	DESIGN & DETAIL ENGINEERING OF CIVIL & STRUCTURAL JOBS	GA PLAN & ELEVATIONS FOR CONTROL ROOM INCLUDING TRANSFORMER AND CABLE TRENCH ES, WASTE OIL PIT ETC.
8	UPGRADATION POWER DISTRIBUTION PACKAGE	SIEMENS LTD.	CITY MONTESSORI SCHOOL GOMTI NAGAR, LUCKNOW, UTTAR PRADESH	DESIGN & DETAIL ENGINEERING OF CIVIL & STRUCTURAL JOBS	DG CONTAINER STRUCTURE
9	EFL BOPET FACILITY DESIGN 132 KV SWITCHYARD	SIEMENS LTD.	MOTT MACDONALD Unit No 101, First Floor NOMURA Building, Hiranandani Gardens Powai Mumbai	DESIGN & DETAIL ENGINEERING OF CIVIL & STRUCTURAL JOBS	DG CONTAINER STRUCTURE
10	UPGRADATION POWER DISTRIBUTION PACKAGE	SIEMENS LTD.	CITY MONTESSORI SCHOOL GOMTI NAGAR, LUCKNOW, UTTAR PRADESH	DETAIL ENGINEERING OF CIVIL JOBS	ARCHITECTURAL GA OF METER ROOM & HT PANEL ROOM
	EFL BOPET FACILITY DESIGN 132 KV SWITCHYARD	SIEMENS LTD.	MOTT MACDONALD & ESTER FILMTECH LIMITED	DESIGN & DETAIL ENGINEERING OF CIVIL & STRUCTURAL JOBS & REGULAR SUPERVISION	SWITCH YARD EQUIPMENT SUPPORTING STRUCTURE, FOUNDATION & MCC BUILDING & REGULAR SUPERVISION
	110/11KV AIS SUB-STATION PROJECT	SIEMENS LTD.	GOLD PLUS FLOAT GLASS PVT. LTD	DESIGN & DETAIL ENGINEERING OF CIVIL & STRUCTURAL JOBS & REGULAR SUPERVISION	SWITCH YARD EQUIPMENT SUPPORTING STRUCTURE, FOUNDATION & MCC BUILDING & REGULAR SUPERVISION
	MCNALLY BHARAT				
1	GREEN ANODE PLANT - JHARSUGUDA	VEDANTA ALUMINA LTD, JHARSUGUDA, INDIA	MCNALLY BHARAT	DESIGN & DETAIL ENGINEERING OF STRUCTURAL JOBS	COLUMN, FLOOR, STAIR, LADDRE ETC
	CFIT				
1	WATER SOLUBLE FERTILIZER PLANT.	ZUARI ROTEM SPECILITY FERTILIZER LTD.	CFIT	DESIGN & DETAIL ENGINEERING OF CIVIL & STRUCTURAL JOBS	ADMINISTRATION BUILDING, CONTROL ROOM, WEIGH BRIDGE, EMERGENCY EXIT STAIR, FIRE FIGHTING ETC..
	NICCO PARK & RESORTS LTD. JHEEL MEEL SECTOR IV				
1	WATER COASTER FOR SILIGURI PROJECT	NICCO PARK & RESORTS LTD. JHEEL MEEL SECTOR IV	ROSE VALLEY	DESIGN & DETAIL ENGINEERING OF CIVIL & STRUCTURAL JOBS	WATER COASTER , TOWER, CONVEYOR ETC..
2	ROSE VALLEY PROJECT MANDARONI	NICCO PARK & RESORTS LTD. JHEEL MEEL SECTOR IV	ROSE VALLEY	DESIGN & DETAIL ENGINEERING OF CIVIL & STRUCTURAL JOBS	WATER FALLS, CHANGE ROOM, STAGE, DOME ETC..
3	AMUSEMENT PARK IN ECONOMY HOTEL SECTOR AT DIGHA TOWNSHIP	NICCO PARK & RESORTS LTD. JHEEL MEEL SECTOR IV	ROSE VALLEY	DESIGN & DETAIL ENGINEERING OF CIVIL & STRUCTURAL JOBS	FOOD COURT, HORROR HOUSE, TOWER ETC..
4	PROPOSED AMUSEMENT PARK AT BARASAT BAMANMURAH PARK	NICCO PARK & RESORTS LTD. JHEEL MEEL SECTOR IV	ROSE VALLEY	DESIGN & DETAIL ENGINEERING OF CIVIL & STRUCTURAL JOBS	HAUNTED HOUSE, TOWER ETC..
5	CABLE CAR RIDE AT BANGLADESH	NICCO PARK & RESORTS LTD. JHEEL MEEL SECTOR IV	DREAM HOLIDAY PARK, BANGLADESH	DESIGN & DETAIL ENGINEERING OF CIVIL JOBS	CABLE CAR RIDE
6	NICCO PARKS & RESORTS LTD. SALT LAKE CITY, SECTOR IV, KOLKATA-700 106	NICCO PARKS & RESORTS LIMITED	NICCO PARKS & RESORTS LIMITED	DESIGN AND DETAIL ENGINEERING OF DIFFERENT RIDES LIKE WATER CHUTE, CAVE, MOON RAKER, EIFEL TOWER, STRIKING CAR, WATER COASTER, WAVE POOL, DROP TOWER ETC.... AT KOLKATA.	DESIGN AND DETAIL ENGINEERING OF CIVIL AND STRUCTURAL JOBS
7	NICCO PARKS & RESORTS LIMITED	NICCO PARKS & RESORTS LIMITED	NICCO PARKS & RESORTS LIMITED	SAME AT SILIGURI	DESIGN AND DETAIL ENGINEERING OF CIVIL AND STRUCTURAL JOBS
8	DREAM HOLIDAY PARK, BANGLADESH	NICCO PARKS & RESORTS LIMITED	NICCO PARKS & RESORTS LIMITED	CABLE CAR, GIANT WHEEL AT BANGLADESH	DESIGN AND DETAIL ENGINEERING OF CIVIL AND STRUCTURAL JOBS

LIST OF MAJOR JOBS, SUCCESSFULLY COMPLETED					
SL. No.	NAME OF THE PROJECT	CLIENT	APPROVAL AUTHORITY	TLCE'S RESPONSIBILITY	TYPE OF JOB
9	ROSE VALLEY REAL ESTATE & CONSTRUCTION LTD.	NICCO PARKS & RESORTS LIMITED	NICCO PARKS & RESORTS LIMITED	WATER FALLS AND OTHER RIDES AT MANDARMANI	DESIGN AND DETAIL ENGINEERING OF CIVIL AND STRUCTURAL JOBS
10	FOOD COURT	NICCO PARKS & RESORTS LIMITED	NICCO PARKS & RESORTS LIMITED	FOOD COURT	DESIGN AND DETAIL ENGINEERING OF CIVIL AND STRUCTURAL JOBS
11	WAVE POOL FOR BANGLADESH	NICCO PARKS & RESORTS LIMITED	NICCO PARKS & RESORTS LIMITED	WAVE POOL	DESIGN AND DETAIL ENGINEERING OF CIVIL JOBS
12	WATER PARK AT KOLKATA	NICCO PARKS & RESORTS LIMITED	NICCO PARKS & RESORTS LIMITED	WATER FALLS AND OTHER RIDES AT KOLKATA	DESIGN AND DETAIL ENGINEERING OF CIVIL JOBS
13	DRY AND WATER PARK AT DIMAPUR	NICCO PARKS & RESORTS LIMITED	NICCO PARKS & RESORTS LIMITED	ALL ITEMS AS EXISTING IN KOLKATA	DESIGN AND DETAIL ENGINEERING OF CIVIL AND STRUCTURAL JOBS
14	CRUSADER RIDE	NICCO PARKS & RESORTS LIMITED	NICCO PARKS & RESORTS LIMITED	CRUSADER RIDE	DESIGN AND DETAIL ENGINEERING OF CIVIL AND STRUCTURAL JOBS
15	BOSIL FUN EORLD AMUSEMENT PARK AT SILIGURI	NICCO PARK & RESORTS LTD. JHEEL MEEL SECTOR IV	NICCO PARKS & RESORTS LIMITED	DESIGN & DETAIL ENGINEERING OF CIVIL & STRUCTUARAL JOBS	AMPY THEATER GALLERY
16	PROPOSED PARK AT NO-10 , DIMAPUR, NAGALAND	MR. T.K. ANGAMI	NICCO PARKS & RESORTS LIMITED	DESIGN & DETAIL ENGINEERING OF CIVIL & STRUCTUARAL JOBS	CHANGE ROOM , FOOD CORT, GAS BANK ETC..
17	WATER TANK AREA	NICCO PARK & RESORTS LTD. JHEEL MEEL SECTOR IV	NICCO PARKS & RESORTS LIMITED	DESIGN & DETAIL ENGINEERING OF CIVIL & STRUCTUARAL JOBS	STRUCTURAL
18	EXTENDED PORTION OF TEMPORARY A.C. HANGER	NICCO PARK & RESORTS LTD. JHEEL MEEL SECTOR IV	NICCO PARKS & RESORTS LIMITED	DESIGN & DETAIL ENGINEERING OF CIVIL & STRUCTUARAL JOBS	STRUCTURAL
19	SAL WOOD BRIDGE	NICCO PARK & RESORTS LTD. JHEEL MEEL SECTOR IV	NICCO PARKS & RESORTS LIMITED	WOOD BRIDGE	DESIGN AND DETAIL ENGINEERING OF CIVIL AND STRUCTURAL JOBS
20	A.C.HANGER AT PLAZA IV, NICCO PARK.	NICCO PARK & RESORTS LTD. JHEEL MEEL SECTOR IV	NICCO PARKS & RESORTS LIMITED	DESIGN & DETAIL ENGINEERING OF CIVIL & STRUCTUARAL JOBS	STRUCTURAL
21	HAUNTED HOUSE-REVOLVING PLATFORM (NEW)	NICCO PARK & RESORTS LTD. JHEEL MEEL SECTOR IV	NICCO PARKS & RESORTS LIMITED	DESIGN & DETAIL ENGINEERING OF CIVIL & STRUCTUARAL JOBS	STRUCTURAL
22	ZYCLONE ROLLER COASTER(12M)	BLUE WORLD CORPN. (P) LTD. KANPUR	NICCO PARKS & RESORTS LIMITED	DESIGN & DETAIL ENGINEERING OF CIVIL & STRUCTUARAL JOBS	CIVIL
23	CROSS OVER BRIDGE IN FRONT OF MAIN GATE OF BASIL FUN WORLD, FULBARI, SILIGURI.	NICCO PARK & RESORTS LTD. JHEEL MEEL SECTOR IV	NICCO PARKS & RESORTS LIMITED	DESIGN & DETAIL ENGINEERING OF CIVIL & STRUCTUARAL JOBS	STRUCTURAL
24	BASIL FUN WORLD AMUSEMENT PARK AT SILIGURI	BASIL INTERNATIONAL LIMITED	NICCO PARKS & RESORTS LIMITED	DESIGN & DETAIL ENGINEERING OF CIVIL & STRUCTUARAL JOBS	WATCH TOWER
	METSO MINERALS				
1	1200 TPH CRUSHING & SCREENING PLANT	METSO MINERALS	SOMA ENTERPRISE	DESIGN & DETAIL ENGINEERING OF STRUCTUARAL & CIVIL JOBS	CONVEYOR SUPPORTING STRUCTURE, TECHNOLOGICAL STRUCTURES, RECEIVING HOPPER, RCC TUNNEL, HP200 SUPP. STRUCTURE, 2D, 3D SCREEN SUPPORTING STRUCTURE, BARMAC SUPPORTING STRUCTURE, SANDTRAP, RETAINING WALL ETC..COMPLETE CRUSHING & SCREENING PLANT.
2	250 TPH, 3 STAGE MODULAR C & S PLANT	METSO MINERALS	M/s ORIENTAL STRUCTURAL ENGRS. PVT. LTD.	DESIGN & DETAIL ENGINEERING OF CIVIL JOBS	-D0-
3	360 TPH 3-STAGE CRUSHING & SCREENING PLANT	METSO MINERALS	M/S ARSS INFRASTRUCTURE PROJECTS LTD.	DESIGN & DETAIL ENGINEERING OF CIVIL JOBS	-D0-
4	360 TPH 3-STAGE CRUSHING & SCREENING PLANT	METSO MINERALS	M/S ARSS INFRASTRUCTURE PROJECTS LTD.	DESIGN & DETAIL ENGINEERING OF CIVIL JOBS	-D0-
5	300TPH CRUSHING PLANT.	METSO MINERALS	M/s MEWAT GRIT UDYOG (PLANT-2)	DESIGN & DETAIL ENGINEERING OF CIVIL JOBS	-D0-
6	200TPH 2 STAGE CRUSHING & SCREENING PLANT.	METSO MINERALS	M/s MAHADEVA STONE COMPANY	DESIGN & DETAIL ENGINEERING OF CIVIL JOBS	-D0-
7	240TPH 3 STAGE CRUSHING & SCREENING PLANT.	METSO MINERALS	M/s MEWAT GRIT UDYOG	DESIGN & DETAIL ENGINEERING OF CIVIL JOBS	-D0-
8	200 TPH, 3 STAGE MODULAR C & S PLANT	METSO MINERALS	FOR STOCK-1	DESIGN & DETAIL ENGINEERING OF STRUCTUARAL JOBS	-D0-
9	200 TPH, 3 STAGE C&S PLANT	METSO MINERALS	M/S ANANT STONE CRUSHER.	DESIGN & DETAIL ENGINEERING OF CIVIL JOBS	-D0-
10	160 TPH, 2 STAGE MODULAR CRUSHING & SCREENING PLANT	METSO MINERALS	M/S SRI BALAJI GRANITES	DESIGN & DETAIL ENGINEERING OF CIVIL JOBS	-D0-
11	210 TPH C & S PLANT.	METSO MINERALS	M/S JUMBO ROCKS (P) LTD.(SECONDARY SECTION)	DESIGN & DETAIL ENGINEERING OF CIVIL & STRUCTUARAL JOBS	-D0-
12	200 TPH 3 STAGE C & S PLANT FOR PUNATSANGCHHU-1 HYDROELECTRIC PROJECT, BHUTAN	METSO MINERALS	M/S HINDUSTAN CONSTRUCTION CO. LTD.	DESIGN & DETAIL ENGINEERING OF STRUCTUARAL JOBS	-D0-
13	100-125 TPH 2 STAGE MODULAR C & S PLANT.	METSO MINERALS	D.S. CRUSHER PVT. LTD.	DESIGN & DETAIL ENGINEERING OF CIVIL JOBS	-D0-
14	133 TPH, 3 STAGE C & S PLANT	METSO MINERALS	M/S. CHEVRON MINERALS & MINES PVT. LTD.	DESIGN & DETAIL ENGINEERING OF CIVIL JOBS	-D0-
15	300 TPH 3 STAGE C & S PLANT	METSO MINERALS	M/S BSC C & C JV	DESIGN & DETAIL ENGINEERING OF CIVIL JOBS	-D0-
16	200 TPH CRUSHING & SCREENING PLANT.	METSO MINERALS	M/S MAA SHARDA STONE CRUSHER PVT LTD	DESIGN & DETAIL ENGINEERING OF CIVIL JOBS	-D0-
17	220 TPH, CRUSHING & SCREENING PLANT	METSO MINERALS	M/s OM SAI METAL	DESIGN & DETAIL ENGINEERING OF CIVIL JOBS	-D0-
18	1000 TPH CRUSHING & SCREENING PLANT	METSO MINERALS	KALINGA COMMERCIAL CORPORATION.	DESIGN & DETAIL ENGINEERING OF STRUCTUARAL JOBS	-D0-
19	245 TPH 2 STAGE CRUSHING & SCREENING PLANT.	METSO MINERALS	M/S SHREE SHYAM ASSOCIATES	DESIGN & DETAIL ENGINEERING OF STRUCTUARAL JOBS	-D0-

LIST OF MAJOR JOBS, SUCCESSFULLY COMPLETED					
SL. No.	NAME OF THE PROJECT	CLIENT	APPROVAL AUTHORITY	TLCE'S RESPONSIBILITY	TYPE OF JOB
20	320 TPH C & S PLANT	METSO MINERALS	M/s MEENAKSHI INFRASTRUCTURE PVT.LTD.	DESIGN & DETAIL ENGINEERING OF CIVIL & STRUCTUARAL JOBS	-D0-
21	240 TPH 3 STAGE CRUSHING & SCREEING PLANT.	METSO MINERALS	M/s BLUE METALS COMPANY PVT. LTD.	DESIGN & DETAIL ENGINEERING OF CIVIL & STRUCTUARAL JOBS	-D0-
22	500 TPH PLANT	METSO MINERALS		DESIGN & DETAIL ENGINEERING OF STRUCTUARAL JOBS	-D0-
23	200 TPH C & S PLANT	METSO MINERALS	IGC MATERIALS PRIVATE LIMITED	DESIGN & DETAIL ENGINEERING OF CIVIL & STRUCTUARAL JOBS	-D0-
24	METSO GALLERY MODIFICATION	METSO MINERALS		DESIGN & DETAIL ENGINEERING OF STRUCTUARAL JOBS	-D0-
25	295 TPH 2 STAGE C & S PLANT.	METSO MINERALS	SRI VISHNU RADHA ROCK CRUSHERS	DESIGN & DETAIL ENGINEERING OF CIVIL & STRUCTUARAL JOBS	-D0-
26	320 THP C&S PLANT-PLANT No.11	METSO MINERALS	M/S MADHUCON PROJECTS LTD.	DESIGN & DETAIL ENGINEERING OF CIVIL & STRUCTUARAL JOBS	-D0-
27	150 TPH 2 STAGE MODULAR C & S PLANT.	METSO MINERALS	M/S RAVI-TEJA INDUSTRIES	DESIGN & DETAIL ENGINEERING OF STRUCTUARAL JOBS	-D0-
28	150 TPH AGGREGATEE CRUSHING & SCREENING PLANT	METSO MINERALS	M/S PATI BEL J.V.(KERLA)	DESIGN & DETAIL ENGINEERING OF STRUCTUARAL JOBS	-D0-
29	150 TPH, 3 STAGE. CHINA MODULAR PLANT	METSO MINERALS	METSO CHINA	DESIGN & DETAIL ENGINEERING OF STRUCTUARAL JOBS	-D0-
30	150 TPH, 3 STAGE. CHINA MODULAR PLANT	METSO MINERALS	METSO CHINA	DESIGN & DETAIL ENGINEERING OF STRUCTUARAL JOBS	-D0-
31	250 TPH, 3 STAGE CHINA MODULAR PLANT	METSO MINERALS	METSO CHINA	DESIGN & DETAIL ENGINEERING OF STRUCTUARAL JOBS	-D0-
32	320 TPH, 3 STAGE. CHINA MODULAR PLANT	METSO MINERALS	METSO CHINA	DESIGN & DETAIL ENGINEERING OF STRUCTUARAL JOBS	-D0-
33	250 TPH, 3 STAGE. CHINA MODULAR PLANT	METSO MINERALS	METSO CHINA	DESIGN & DETAIL ENGINEERING OF STRUCTUARAL JOBS	-D0-
34	320 TPH,3 STAGE CHINA MODULAR PLANT	METSO MINERALS	METSO CHINA	DESIGN & DETAIL ENGINEERING OF STRUCTUARAL JOBS	-D0-
35	250 TPH MODULAR C & S PLANT	METSO MINERALS	METSO CHINA	DESIGN & DETAIL ENGINEERING OF STRUCTUARAL JOBS	-D0-
36	220 TPH, CRUSHING & SCREENING FIXED PLANT, HINDUSTAN ZINC LTD.	METSO MINERALS	DCL, KOLKATA	DESIGN & DETAIL ENGINEERING OF CIVIL & STRUCTUARAL JOBS	-D0-
37	SCREEN STATION-CVB 2060-2D	METSO MINERALS	DCL, KOLKATA	DESIGN & DETAIL ENGINEERING OF CIVIL & STRUCTUARAL JOBS	-D0-
38	175 TPH, 3 STAGE C&S PLANT M/S ANANT STONE CRUSHER	METSO MINERALS	DCL, KOLKATA	DESIGN & DETAIL ENGINEERING OF CIVIL & STRUCTUARAL JOBS	-D0-
39	350 TPH C & S PLANT	METSO MINERALS	SAISAMBHU INFRASTRUCTURE PVT. LTD.	DESIGN & DETAIL ENGINEERING OF CIVIL & STRUCTUARAL JOBS	-D0-
40	500 TPH CRUSHING & SCREENING PLANT FOR DAM PROJECT.	METSO MINERALS	M/s. B.SEENAIH & CO.	DESIGN & DETAIL ENGINEERING OF CIVIL & STRUCTUARAL JOBS	-D0-
41	300 TPH CRUSHING & SCREENING PLANT	METSO MINERALS	M/s HINDUSTAN ZINC LIMITED-ZAWAR MINE	DESIGN & DETAIL ENGINEERING OF CIVIL & STRUCTUARAL JOBS	-D0-
42	JAW CRUSHER C106 STATION	METSO MINERALS	DCL, KOLKATA	DESIGN & DETAIL ENGINEERING OF CIVIL & STRUCTUARAL JOBS	-D0-
43	320 TPH C&S PLANT	METSO MINERALS	M/S JUMBO ROCKS (P) LTD.	DESIGN & DETAIL ENGINEERING OF CIVIL & STRUCTUARAL JOBS	-D0-
44	100TPH TERTIARY-STAGE C & S PLANT	METSO MINERALS	M/s KCC , DAITARY	DESIGN & DETAIL ENGINEERING OF CIVIL & STRUCTUARAL JOBS	-D0-
45	250 TPH CRUSHING AND SCREENING PLANT, KALYAN	METSO MINERALS	LAFARGE AGGREGATES AND CONCRETE INDIA PVT.LTD.	DESIGN & DETAIL ENGINEERING OF CIVIL & STRUCTUARAL JOBS	-D0-
46	MADHUCON BUNK HOUSE	METSO MINERALS	DCL, KOLKATA	DESIGN & DETAIL ENGINEERING OF CIVIL & STRUCTUARAL JOBS	-D0-
47	320 TPH C&S PLANT	METSO MINERALS	M/s MEENAKSHI INFRASTRUCTURE PVT. LTD.	DESIGN & DETAIL ENGINEERING OF CIVIL & STRUCTUARAL JOBS	-D0-
48	JAW CRUSHER (C 125)	METSO MINERALS	METSO MINERALS	DESIGN & DETAIL ENGINEERING OF CIVIL & STRUCTUARAL JOBS	-D0-
49	TUNNEL	METSO MINERALS	METSO MINERALS	DESIGN & DETAIL ENGINEERING OF CIVIL & STRUCTUARAL JOBS	-D0-
50	NW1213 WITH TK11-22+TK11-20-2V	METSO MINERALS	METSO MINERALS	DESIGN & DETAIL ENGINEERING OF CIVIL & STRUCTUARAL JOBS	-D0-
51	GRIZZLY	METSO MINERALS	METSO MINERALS	DESIGN & DETAIL ENGINEERING OF CIVIL & STRUCTUARAL JOBS	-D0-
52	JAW CRUSHER	METSO MINERALS	M/S JAGADAMBA STONE	DESIGN & DETAIL ENGINEERING OF CIVIL & STRUCTUARAL JOBS	-D0-
53	TUNNEL	METSO MINERALS	M/s SURYA NARAYAN	DESIGN & DETAIL ENGINEERING OF CIVIL & STRUCTUARAL JOBS	-D0-
54	150 TPH MODULAR C & S PLANT	METSO MINERALS	METSO CHINA	DESIGN & DETAIL ENGINEERING OF CIVIL & STRUCTUARAL JOBS	-D0-
55	CONVEYOR	METSO MINERALS	METSO MINERALS	DESIGN & DETAIL ENGINEERING OF CIVIL & STRUCTUARAL JOBS	-D0-
56	SURGE HOPPER	METSO MINERALS	METSO MINERALS	DESIGN & DETAIL ENGINEERING OF CIVIL & STRUCTUARAL JOBS	-D0-
57	600 TPH IRON ORE C & S PLANT-2	METSO MINERALS	M/S JINDAL SAW LTD.	DESIGN & DETAIL ENGINEERING OF CIVIL & STRUCTUARAL JOBS	-D0-

LIST OF MAJOR JOBS, SUCCESSFULLY COMPLETED					
SL. No.	NAME OF THE PROJECT	CLIENT	APPROVAL AUTHORITY	TLCE'S RESPONSIBILITY	TYPE OF JOB
58	300TPH CRUSHING PLANT.	METSO MINERALS	M/s MEWAT GRIT UDYOG (PLANT-2)	DESIGN & DETAIL ENGINEERING OF CIVIL JOBS	-D0-
59	225 TPH, C&S PLANT (SYSTEM FOR AIR CLASSIFIER)	METSO MINERALS	M/s POABS ENTERPRISES PVT LTD, TIRUVALLA	DESIGN & DETAIL ENGINEERING OF CIVIL JOBS	-D0-
60	JAW CAUSHER	METSO MINERALS	METSO MINERALS	DESIGN & DETAIL ENGINEERING OF CIVIL JOBS	-D0-
61	300 TPH 2-STAGE CRUSHING & SCREENING PLANT	METSO MINERALS	M/S SANTOSH KUMAR	DESIGN & DETAIL ENGINEERING OF CIVIL JOBS	-D0-
62	RETAINING WALL	METSO MINERALS	STRABAG	DESIGN & DETAIL ENGINEERING OF CIVIL JOBS	-D0-
63	145 TPH, 3 STAGE MODULAR C & S PLANT	METSO MINERALS	M/s TAMRAPARANI ENTERPRISES & REALTY (P) LTD	DESIGN & DETAIL ENGINEERING OF CIVIL JOBS	-D0-
64	250 TPH CRUSHING & SCREENING PLANT	METSO MINERALS	M/s TRISSUR SAND & GRAVEL PVT. LTD.	DESIGN & DETAIL ENGINEERING OF CIVIL JOBS	-D0-
65	250 TPH 2-STAGE CRUSHING & SCREENING PLANT	METSO MINERALS	M/s SHRE OM MENIRALS CO.	DESIGN & DETAIL ENGINEERING OF CIVIL JOBS	-D0-
66	ID FAN	METSO MINERALS	METSO MINERALS	DESIGN & DETAIL ENGINEERING OF CIVIL JOBS	-D0-
67	250 TPH, CRUSHING & SCREENING PLANT	METSO MINERALS	M/S TRIPHTHY GRANITES	DESIGN & DETAIL ENGINEERING OF CIVIL JOBS	-D0-
68	300 TPH 3 STAGE C & S PLANT	METSO MINERALS	M/S BSC C & C JV	DESIGN & DETAIL ENGINEERING OF CIVIL JOBS	-D0-
69	CONVEYOR BC-120	METSO MINERALS	M/s UNITED GRANITES & METALS	DESIGN & DETAIL ENGINEERING OF CIVIL JOBS	-D0-
70	20 Cu.M SURGE HOPPER STATION-2	METSO MINERALS	METSO MINERALS	DESIGN & DETAIL ENGINEERING OF CIVIL JOBS	-D0-
71	GP 220 STATION SUPPORTING STRUCTURE	METSO MINERALS	METSO MINERALS	DESIGN & DETAIL ENGINEERING OF CIVIL JOBS	-D0-
72	CONVEYOR (1000mm W/Wx41m LG.)	METSO MINERALS	METSO MINERALS	DESIGN & DETAIL ENGINEERING OF CIVIL JOBS	-D0-
73	1000 TPH	METSO MINERALS	KCC	DESIGN & DETAIL ENGINEERING OF CIVIL JOBS	-D0-
74	600 TPH C & S PLANT	METSO MINERALS	M/s KCC LTD.	DESIGN & DETAIL ENGINEERING OF CIVIL JOBS	-D0-
75	SURGE HOPPER	METSO MINERALS	METSO MINERALS	DESIGN & DETAIL ENGINEERING OF CIVIL JOBS	-D0-
76	HZL- GRIZZLY	METSO MINERALS	METSO MINERALS	DESIGN & DETAIL ENGINEERING OF CIVIL JOBS	-D0-
77	800 TPH IRON ORE C & S PLANT	METSO MINERALS	M/S MIDEAST INTEGRATED STEEL LTD.	DESIGN & DETAIL ENGINEERING OF CIVIL JOBS	-D0-
78	CVB-1845	METSO MINERALS	METSO MINERALS	DESIGN & DETAIL ENGINEERING OF CIVIL JOBS	-D0-
79	JAW CRUSHER (C 125)	METSO MINERALS	METSO MINERALS	DESIGN & DETAIL ENGINEERING OF CIVIL JOBS	-D0-
80	HOPPER (78 CUM CAP.) & SUPPORTING STRUCTURE	METSO MINERALS	JSW	DESIGN & DETAIL ENGINEERING OF CIVIL JOBS	-D0-
81	STEEL TUNNEL	METSO MINERALS	METSO MINERALS	DESIGN & DETAIL ENGINEERING OF CIVIL JOBS	-D0-
82	RAMP	METSO MINERALS	METSO MINERALS	DESIGN & DETAIL ENGINEERING OF CIVIL JOBS	-D0-
83	350 TPH 2-STAGE C & S PLANT	METSO MINERALS	M/s MAA DURGA STONE WORKS	DESIGN & DETAIL ENGINEERING OF CIVIL JOBS	-D0-
84	600 TPH. IRON ORE CRUSHING & SCREENING PLANT	METSO MINERALS	NSPL	DESIGN & DETAIL ENGINEERING OF CIVIL JOBS	-D0-
85	RECEIVING HOPPER 80 CUM	METSO MINERALS	NSPL	DESIGN & DETAIL ENGINEERING OF CIVIL JOBS	-D0-
86	JAW CRUSHER STATION NW-106	METSO MINERALS	METSO MINERALS	DESIGN & DETAIL ENGINEERING OF CIVIL JOBS	-D0-
87	GP220 STATION SUPPORTING STRUCTURE	METSO MINERALS	METSO MINERALS	DESIGN & DETAIL ENGINEERING OF CIVIL JOBS	-D0-
88	GP220 STATION SUPPORTING STRUCTURE	METSO MINERALS	METSO MINERALS	DESIGN & DETAIL ENGINEERING OF CIVIL JOBS	-D0-
89	TS-6.2 STRUCTURE	METSO MINERALS	METSO MINERALS	DESIGN & DETAIL ENGINEERING OF CIVIL JOBS	-D0-
90	NW-SCREEN FEED PLANT	METSO MINERALS	S.S.COMPANY	DESIGN & DETAIL ENGINEERING OF CIVIL JOBS	-D0-
91	DS1855-4D (NCP) & GP-220 (NCP)	METSO MINERALS	METSO MINERALS	DESIGN & DETAIL ENGINEERING OF CIVIL JOBS	-D0-
92	600 TPH. IRON ORE CRUSHING & SCREENING PLANT	METSO MINERALS	GODAVARI	DESIGN & DETAIL ENGINEERING OF CIVIL JOBS	-D0-
93	40 CUM. SURGE HOPPER STATION	METSO MINERALS	METSO MINERALS	DESIGN & DETAIL ENGINEERING OF CIVIL JOBS	-D0-
94	JAW CRUSHER STATION-C120	METSO MINERALS	METSO MINERALS	DESIGN & DETAIL ENGINEERING OF CIVIL JOBS	-D0-
95	EXTRA HOPPER & NW106	METSO MINERALS	METSO MINERALS	DESIGN & DETAIL ENGINEERING OF CIVIL JOBS	-D0-
96	200 TPH 3 STAGE MODULAR C & S PLANT	METSO MINERALS	FOR STOCK-1	DESIGN & DETAIL ENGINEERING OF CIVIL JOBS	-D0-
	SIEMENS VAI				
1	Continuous Casting Plant / Package 026	SIEMENS VAI	MECON LIMITED	DESIGN & DETAIL ENGINEERING OF STRUCTUARAL JOBS	PLATFORM, COLUMNS, BEAMS, ETC..
2	3x160t/180t BOF Complex / Package 025	SIEMENS VAI	MECON LIMITED	DESIGN & DETAIL ENGINEERING OF STRUCTUARAL & DUCTING JOBS	DUCT & DUCT SUPPORT
	MASYC PROJECTS PVT. LTD.				
1	C & S PLANT OF M/S CEMENT MANUFACTURING CO. LTD	MASYC PROJECTS PVT. LTD.(MASYC-1055)	HOLTEC CONSULTING PRIVATE LIMITED	DESIGN & DETAIL ENGINEERING OF STRUCTUARAL JOBS	CONVEYOR
2	C & S PLANT OF M/S CEMENT MANUFACTURING CO. LTD	MASYC PROJECTS PVT. LTD.(MASYC1086)	M/s. TAMIL NADU NEWSPRINT AND PAPERS LTD.	DESIGN & DETAIL ENGINEERING OF STRUCTUARAL JOBS	CONVEYOR & JUNCTION TOWER
3	C & S PLANT OF M/S CEMENT MANUFACTURING CO. LTD	MASYC PROJECTS PVT. LTD.(MASYC1087)	M/S HOLTECH CONSULTING PVT.LTD.	DESIGN & DETAIL ENGINEERING OF STRUCTUARAL JOBS	CONVEYOR & SURGE HOPPER BUILDING
4	C & S PLANT OF M/S CEMENT MANUFACTURING CO. LTD	MASYC PROJECTS PVT. LTD.(MASYC1174)	M/s MY HOME INDUSTRIES LIMITED, HYDERABAD	DESIGN & DETAIL ENGINEERING OF STRUCTUARAL JOBS	CONVEYOR
5	C & S PLANT OF M/S CEMENT MANUFACTURING CO. LTD	MASYC PROJECTS PVT. LTD.(MASYC1180)	M/S CEMENT MANUFACTURING CO. LTD	DESIGN & DETAIL ENGINEERING OF STRUCTUARAL JOBS	CONVEYOR
6	C & S PLANT OF M/S CEMENT MANUFACTURING CO. LTD	MASYC PROJECTS PVT. LTD.(MASYC1182)	M/S ACTION ISPAT & POWER (P)LTD	DESIGN & DETAIL ENGINEERING OF STRUCTUARAL JOBS	CONVEYOR, SCREEN HOUSE & CRUSHER HOUSE
7	C & S PLANT OF M/S CEMENT MANUFACTURING CO. LTD	MASYC PROJECTS PVT. LTD.(MASYC1227)	KORUS ENGG. SOLUTIONS (PVT.) LTD.	DESIGN & DETAIL ENGINEERING OF STRUCTUARAL JOBS	CONVEYOR, SCREEN HOUSE & CRUSHER HOUSE
8	C & S PLANT OF M/S CEMENT MANUFACTURING CO. LTD	MASYC PROJECTS PVT. LTD.(MASYC1241)	MECON LIMITED	DESIGN & DETAIL ENGINEERING OF STRUCTUARAL JOBS	CONVEYOR
9	C & S PLANT OF M/S CEMENT MANUFACTURING CO. LTD	MASYC PROJECTS PVT. LTD.(MASYC1273)	M/s EASTERN MINERALS & TRADING AGENCY	DESIGN & DETAIL ENGINEERING OF STRUCTUARAL & CIVIL JOBS	CONVEYOR,TRANSFER TOWER & GROUND HOPPER

LIST OF MAJOR JOBS, SUCCESSFULLY COMPLETED					
SL. No.	NAME OF THE PROJECT	CLIENT	APPROVAL AUTHORITY	TLCE'S RESPONSIBILITY	TYPE OF JOB
10	C & S PLANT OF M/S CEMENT MANUFACTURING CO. LTD	MASYC PROJECTS PVT. LTD.(MASYC1227)	M/s. HOLTEC CONSULTING PVT. LTD.	DESIGN & DETAIL ENGINEERING OF STRUCTURAL JOBS	CONVEYOR
11	C & S PLANT OF M/S CEMENT MANUFACTURING CO. LTD	MASYC PROJECTS PVT. LTD.(MASYC1279)	M/s JAGUAR OVERSEAS LTD.	DESIGN & DETAIL ENGINEERING OF STRUCTURAL JOBS	CONVEYOR & TRANSFER TOWER
12	C & S PLANT OF M/S CEMENT MANUFACTURING CO. LTD	MASYC PROJECTS PVT. LTD.(MASYC1295)	M/s. SREE METALIKS LIMITED	DESIGN & DETAIL ENGINEERING OF STRUCTURAL JOBS	CONVEYOR & TRANSFER TOWER
13	C & S PLANT OF M/S CEMENT MANUFACTURING CO. LTD	MASYC PROJECTS PVT. LTD.(MASYC1322)	M/s. SREE METALIKS LIMITED	DESIGN & DETAIL ENGINEERING OF STRUCTURAL JOBS	CONVEYOR
14	C & S PLANT OF M/S CEMENT MANUFACTURING CO. LTD	MASYC PROJECTS PVT. LTD.(MASYC1356)	Bhushan POWER & STEEL LTD IRON & STEEL PLANT AT RENGALI, ORISSA	DESIGN & DETAIL ENGINEERING OF STRUCTURAL JOBS	CONVEYOR ,JUNCTION TOWER & SCREEN HOUSE
15	C & S PLANT OF M/S CEMENT MANUFACTURING CO. LTD	MASYC PROJECTS PVT. LTD.(MASYC1234)	M/s. LARSEN & TOURBO LIMITED	DESIGN & DETAIL ENGINEERING OF STRUCTURAL JOBS	CONVEYOR
16	C & S PLANT OF M/S CEMENT MANUFACTURING CO. LTD	MASYC PROJECTS PVT. LTD.(MASYC1373)	M/S. SUPER SMELTERS LTD. (SAI GROUP)	DESIGN & DETAIL ENGINEERING OF STRUCTURAL & CIVIL JOBS	CONVEYOR,TRANSFER TOWER, GROUND HOPPER,CRUSHER HOUSE, TUNNEL & PENT HOUSE ETC..
16	C & S PLANT OF M/S CEMENT MANUFACTURING CO. LTD	MASYC PROJECTS PVT. LTD.(MASYC1373)	M/S. JINDAL SAW LTD.	DESIGN & DETAIL ENGINEERING OF STRUCTURAL	CONVEYOR,TRANSFER TOWER, CRUSHER HOUSE, BUNKER/ SILO, TUNNEL & PENT HOUSE ETC..
TCPL					
1	REPLACEMENT OF 33KV SWITCHGEARS ALONG WITH ASSOCIATED ISOLATORS AND PROTECTION CUM CONTROL PANEL AT POWER PLANT AT SAIL IISCO BURNPUR	TCPL	CET	DESIGN & DETAIL ENGINEERING OF STRUCTURAL & CIVIL JOBS	SWITCH YARD EQUIPMENT SUPPORTING STRUCTURE & FOUNDATION
ILFS					
1	ANS3: "CONSTRUCTION OF SEVEN (07) STATIONS FROM SUB CBD-1 TO TITUMIR IN NEW GARIA - AIRPORT METRO CORRIDOR OF KOLKATA METRO LINE"	RAIL VIKASH NIGAM LIMITED	RAIL VIKASH NIGAM LIMITED	DESIGN & DETAIL ENGINEERING OF STAGING AND SHUTTERING OF METRO STATION AT KOLKATA	STAGING AND SHUTTERING
TATA HITACHI					
1	KURAKI MACHINE AT FABRICATION SHOP	TATA HITACHI CONSTRUCTION MACHINERY COMPANY PVT. LTD. KHARGAPUR	TATA HITACHI	DESIGN & DETAIL ENGINEERING OF MACHINE FOUNDATION	MACHINE FOUNDATION
2	VERTICAL EXTENSION OF EXISTING GUEST HOUSE	TATA HITACHI CONSTRUCTION MACHINERY COMPANY PVT. LTD. KHARGAPUR	TATA HITACHI	DESIGN & DETAIL ENGINEERING	CIVIL
3	• ATTACHMENT PLANT SHOP • DUMPER & ROAD EQUIPMENT ASSEMBLY SHOP • REMAN CENTRE • WHEEL LOADER BUILDING	TATA HITACHI CONSTRUCTION MACHINERY COMPANY PVT. LTD. KHARGAPUR	TATA HITACHI	DESIGN & DETAIL ENGINEERING	STRUCTURAL
4	<ul style="list-style-type: none"> • THE FOLLOWING MACHINE FOUNDATIONS ARE DESIGNED AND PREPARED DRAWINGS; • SNK • TOS • CLOOS • EX 1200 WELDING POSITIONER • IGM WELDING • CRADLE MANIPULATOR • RADIAL DRILL • 1000 TON PRESS • 800 TON PRESS • STRUCTURAL TEST SETUP • HYD. POWER PACK • AXLE TEST RING • 3 ROLL PLATE BENDING • PLATE STRAIGHTENING (7 ROLL) • 470 L. SHAPE POSITIONER • IGM ROBOT • PLASMA CUTTING • PAINT BOOTH • TOSHIBA • BULLDOZER • DISHA • BFT • CHIMNEY • DUST COLLECTOR • ID FAN • MANIPULATOR(KGP) • NEW OXY CUTTING • NITROCARBURIZING FURNACE • SQF-1 (600 Kg.) 	TATA HITACHI CONSTRUCTION MACHINERY COMPANY PVT. LTD. JAMSHEDPUR	TATA HITACHI	DESIGN & DETAIL ENGINEERING OF MACHINE FOUNDATION	CIVIL
5	REMAN SHOP	TATA HITACHI CONSTRUCTION MACHINERY COMPANY PVT. LTD. KHARGAPUR	TATA HITACHI	DESIGN & DETAIL ENGINEERING	CIVIL & STRUCTURAL

LIST OF MAJOR JOBS, SUCCESSFULLY COMPLETED					
SL. No.	NAME OF THE PROJECT	CLIENT	APPROVAL AUTHORITY	TLCE'S RESPONSIBILITY	TYPE OF JOB
6	R & D SHED	TATA HITACHI CONSTRUCTION MACHINERY COMPANY PVT. LTD. KHARGAPUR	TATA HITACHI	DESIGN & DETAIL ENGINEERING	CIVIL & STRUCTURAL
7	MPS SHED	TATA HITACHI CONSTRUCTION MACHINERY COMPANY PVT. LTD. KHARGAPUR	TATA HITACHI	DESIGN & DETAIL ENGINEERING	CIVIL
8	GYMNASIUM SHED AT EXISTING GUEST HOUSE	TATA HITACHI CONSTRUCTION MACHINERY COMPANY PVT. LTD. KHARGAPUR	TATA HITACHI	DESIGN & DETAIL ENGINEERING	CIVIL & STRUCTURAL
9	DISHA SHORT BLAST	TATA HITACHI CONSTRUCTION MACHINERY COMPANY PVT. LTD. KHARGAPUR	TATA HITACHI	DESIGN & DETAIL ENGINEERING	CIVIL
10	LADIES HOSTEL	TATA HITACHI CONSTRUCTION MACHINERY COMPANY PVT. LTD. KHARGAPUR	TATA HITACHI	DESIGN & DETAIL ENGINEERING	CIVIL
11	SANDING SHED	TATA HITACHI CONSTRUCTION MACHINERY COMPANY PVT. LTD. KHARGAPUR	TATA HITACHI	DESIGN & DETAIL ENGINEERING	CIVIL & STRUCTURAL
12	CANTEEN	TATA HITACHI CONSTRUCTION MACHINERY COMPANY PVT. LTD. KHARGAPUR	TATA HITACHI	DESIGN & DETAIL ENGINEERING	CIVIL & STRUCTURAL
13	LEANTO SHED	TATA HITACHI CONSTRUCTION MACHINERY COMPANY PVT. LTD. KHARGAPUR	TATA HITACHI	DESIGN & DETAIL ENGINEERING	CIVIL & STRUCTURAL
14	SHED AT EHEEL & DUMPER	TATA HITACHI CONSTRUCTION MACHINERY COMPANY PVT. LTD. KHARGAPUR	TATA HITACHI	DESIGN & DETAIL ENGINEERING	CIVIL & STRUCTURAL
15	FDN. FOR PAINT SHOP	TATA HITACHI CONSTRUCTION MACHINERY COMPANY PVT. LTD. KHARGAPUR	TATA HITACHI	DESIGN & DETAIL ENGINEERING	CIVIL
16	<ul style="list-style-type: none"> • 3 AXIS MANIPULATOR • HOFER HELIX-400 • IPSEN • SEAL QUENCH FURNACH-SQF-1 • SEAL QUENCH FURNACH-SQF-2 • TOYODA • WIDMA 	TATA HITACHI CONSTRUCTION MACHINERY COMPANY PVT. LTD. KHARGAPUR	TATA HITACHI	DESIGN & DETAIL ENGINEERING	CIVIL
17	EXTENSION OF CANTEEN-2	TATA HITACHI CONSTRUCTION MACHINERY COMPANY PVT. LTD. KHARGAPUR	TATA HITACHI	DESIGN & DETAIL ENGINEERING	STRUCTURAL
18	WEIGH BRIDGE	TATA HITACHI CONSTRUCTION MACHINERY COMPANY PVT. LTD. KHARGAPUR	TATA HITACHI	DESIGN & DETAIL ENGINEERING	CIVIL
19	<ul style="list-style-type: none"> • THE FOLLOWING MACHINE FOUNDATIONS ARE DESIGNED AND PREPARED DRAWINGS: • BAND SAW MACHINE • BEVEL PINION PRESS MACHINE • EXTERNAL GRINDING MACHINE • HYDRAULIC PRESS-60T • PINACHO LATHE SMART • PLINTH PROTECTION & RAMP • PRESS MACHINE • RADIAL DRILL • REAR AXLE PRESS MACHINE & SUB MERGED ARC WELDING • REAR AXLE TESTING MACHINE • SAWING MACHINE • SHAPER CUTTER GRINDER MACHINE • SLOTTING MACHINE • SURFACE GRINDER PMT • UNIVERSAL TESTING MACHINE -60 TON • UNIVERSAL TESTING MACHINE-100 TON • UNIVERSAL TOOL GRINDING • VERTICAL MILLING MACHINE 	TATA HITACHI CONSTRUCTION MACHINERY COMPANY PVT. LTD. JAMSHEDPUR	TATA HITACHI	DESIGN & DETAIL ENGINEERING OF MACHINE FOUNDATION	CIVIL
20	MODIFICATION OF SPLICE FOR CRANE GIRDER	TATA HITACHI CONSTRUCTION MACHINERY COMPANY PVT. LTD. KHARGAPUR	TATA HITACHI	DESIGN & DETAIL ENGINEERING	STRUCTURAL
21	CONSTRUCTION OF ASSEMBLY STORAGE FOR RCM -BUILDING -1	TATA HITACHI CONSTRUCTION MACHINERY COMPANY PVT. LTD. KHARGAPUR	TATA HITACHI	DESIGN & DETAIL ENGINEERING	CIVIL
22	CONSTRUCTION OF FEBRICATION STORAGE FOR RCM -BUILDING -2	TATA HITACHI CONSTRUCTION MACHINERY COMPANY PVT. LTD. KHARGAPUR	TATA HITACHI	DESIGN & DETAIL ENGINEERING	CIVIL
23	KITCHEN	TATA HITACHI CONSTRUCTION MACHINERY COMPANY PVT. LTD. KHARGAPUR	TATA HITACHI	DESIGN & DETAIL ENGINEERING	CIVIL
24	ATTACHMENT SHOP	TATA HITACHI CONSTRUCTION MACHINERY COMPANY PVT. LTD. KHARGAPUR	TATA HITACHI	DESIGN & DETAIL ENGINEERING	STRUCTURAL
25	<ul style="list-style-type: none"> • 10 KVA DG SET • DUST COLLECTOR FOR PLASMA 	TATA HITACHI CONSTRUCTION MACHINERY COMPANY PVT. LTD. KHARGAPUR	TATA HITACHI	DESIGN & DETAIL ENGINEERING	CIVIL
26	COMPRESSOR HOUSE	TATA HITACHI CONSTRUCTION MACHINERY COMPANY PVT. LTD. KHARGAPUR	TATA HITACHI	DESIGN & DETAIL ENGINEERING	CIVIL
27	CNC BUILDING	TATA HITACHI CONSTRUCTION MACHINERY COMPANY PVT. LTD. KHARGAPUR	TATA HITACHI	DESIGN & DETAIL ENGINEERING	STRUCTURAL
28	WELDING RECTIFICATION SHED	TATA HITACHI CONSTRUCTION MACHINERY COMPANY PVT. LTD. KHARGAPUR	TATA HITACHI	DESIGN & DETAIL ENGINEERING	STRUCTURAL
29	PLATFROM SHED	TATA HITACHI CONSTRUCTION MACHINERY COMPANY PVT. LTD. KHARGAPUR	TATA HITACHI	DESIGN & DETAIL ENGINEERING	STRUCTURAL
30	<ul style="list-style-type: none"> • GRINDING MACHINE-1509 • PARISUDH EXTERNAL GRINDING MACHINE • PEDESTAL GRINDING MACHINE • PINACHO LATHE SMART-5 • SAWING MACHINE-2 • VERTICAL MILING MACHINE-MAKE BALTIBOI 	TATA HITACHI CONSTRUCTION MACHINERY COMPANY PVT. LTD. KHARGAPUR	TATA HITACHI	DESIGN & DETAIL ENGINEERING	CIVIL
31	EXHAUST FAN FIXING STRUCTURE	TATA HITACHI CONSTRUCTION MACHINERY COMPANY PVT. LTD. KHARGAPUR	TATA HITACHI	DESIGN & DETAIL ENGINEERING	STRUCTURAL

LIST OF MAJOR JOBS, SUCCESSFULLY COMPLETED					
SL. No.	NAME OF THE PROJECT	CLIENT	APPROVAL AUTHORITY	TLCE'S RESPONSIBILITY	TYPE OF JOB
32	MONORAIL SUPPORTING STRUCTURE	TATA HITACHI CONSTRUCTION MACHINERY COMPANY PVT. LTD. KHARGAPUR	TATA HITACHI	DESIGN & DETAIL ENGINEERING	STRUCTURAL
33	WARE HOUSE	TATA HITACHI CONSTRUCTION MACHINERY COMPANY PVT. LTD. KHARGAPUR	TATA HITACHI	DESIGN & DETAIL ENGINEERING	CIVIL & STRUCTURAL
34	MPS SHED FOR MACHINE FOUNDATION	TATA HITACHI CONSTRUCTION MACHINERY COMPANY PVT. LTD. KHARGAPUR	TATA HITACHI	DESIGN & DETAIL ENGINEERING	CIVIL
35	STORE	TATA HITACHI CONSTRUCTION MACHINERY COMPANY PVT. LTD. KHARGAPUR	TATA HITACHI	DESIGN & DETAIL ENGINEERING	CIVIL & STRUCTURAL
36	VIBRATION BENCH SHED	TATA HITACHI CONSTRUCTION MACHINERY COMPANY PVT. LTD. KHARGAPUR	TATA HITACHI	DESIGN & DETAIL ENGINEERING	STRUCTURAL
37	SHED OVER EXISTING ETP	TATA HITACHI CONSTRUCTION MACHINERY COMPANY PVT. LTD. KHARGAPUR	TATA HITACHI	DESIGN & DETAIL ENGINEERING	STRUCTURAL
38	PEB FOR PDI SHED	TATA HITACHI CONSTRUCTION MACHINERY COMPANY PVT. LTD. KHARGAPUR	TATA HITACHI	DESIGN & DETAIL ENGINEERING	CIVIL & STRUCTURAL
39	QA TESTING SHED	TATA HITACHI CONSTRUCTION MACHINERY COMPANY PVT. LTD. KHARGAPUR	TATA HITACHI	DESIGN & DETAIL ENGINEERING	STRUCTURAL
40	DEGREASE TANK HEATING SYSTEM SHED	TATA HITACHI CONSTRUCTION MACHINERY COMPANY PVT. LTD. KHARGAPUR	TATA HITACHI	DESIGN & DETAIL ENGINEERING	CIVIL & STRUCTURAL
41	PIT QUARRY APPLICATION	TATA HITACHI CONSTRUCTION MACHINERY COMPANY PVT. LTD. KHARGAPUR	TATA HITACHI	DESIGN & DETAIL ENGINEERING	CIVIL
	PAUL WURTH				
1	BPSL Rengali Steel Plant - Orissa, India New 2015 m³ Blast Furnace 2	PAUL WURTH		DETAIL ENGINEERING OF STRUCTURAL	INBA SLAG GRANULATION SYSTEM D5000/5170 STEEL STRUCTURE IN COOLING TOWER AREA
2	BPSL RENGALI STEEL PLANT - ODISHA INDIA NEW 2015 M³ BLAST FURNACE 2 GRINDING AND DRYING PLANT	PAUL WURTH		CARSAR ANALYSIS, DETAIL OF DUCTING	GRINDING AND DRYING PLANT
3	TATA STEEL PLANT - JHARKHAND INDIA BF-H, INBA 2	PAUL WURTH	TATA STEEL	SURVEY & LAYOUT DRAWING FOR PROPOSED INBA AREA	SURVEY & LAYOUT DRAWING
4	BLAST FURNANCE "H" ENGG. OF INBA 1 Stack Support Structure DE	PAUL WURTH	TATA STEEL	DESIGN AND DETAIL ENGINEERING OF 90 M HIGH STACK SUPPORTING STRUCTURE INCLUDING WATER TANK & RCC PILE FOUNDATION.	INBA 1 & 2 Stack Support Structure DE
5	BLAST FURNACE - E	PAUL WURTH	TATA STEEL	DETAIL ENGINEERING OF STRUCTURAL	FURNACE TOP / MINI CF BLT
6	INSTALLATION OF ADDL. HEAT TREATMENT FACILITIES (Pkg-III)	PAUL WURTH	SAIL - CENTER OF ENGINEERING & TECHNOLOGY	DETAIL ENGINEERING OF STRUCTURAL	INBA 1 & 2 Stack Support Structure DE
7	BARE GRANULATION TANK	PAUL WURTH	TATA STEEL	DETAIL ENGINEERING OF STRUCTURAL	RAW PLATE REQUIREMENT
8	GRANULATION TANK-INBA-1 & INBA-2	PAUL WURTH	TATA STEEL	DETAIL ENGINEERING OF MECHANICAL PORTION	MECHANICAL FABRICATION DRAWINGS
9	GRANULATION TANK-JSW	PAUL WURTH	JSW	DETAIL ENGINEERING OF MECHANICAL PORTION	MECHANICAL FABRICATION DRAWINGS
10	Pulverized_Coal_Silo	PAUL WURTH	TATA STEEL	DETAIL ENGINEERING OF MECHANICAL PORTION	MECHANICAL FABRICATION DRAWINGS
	M/s.-GP UKRGIPROMEZ; 17, V.I. Lenin Naberezhnaya str.Dnepropetrovsk, 49000; Ukraine				
1	A. Sinter Machine Building	GP UKRGIPROMEZ; Ukraine	CET, RANCHI	DESIGN OF STRUCTURAL PORTION ONLY AND GETTING APPROVAL FROM CET	DESIGN OF STRUCTURAL JOBS
2	B. Sinter Screening Building	-D0-	-D0-	-D0-	-D0-
3	C. Sinter Crushing Building	-D0-	-D0-	-D0-	-D0-
4	D. Secondary Flux Crushing Building	-D0-	-D0-	-D0-	-D0-
5	E. Flux Screening Building	-D0-	-D0-	-D0-	-D0-
6	F. Primary Flux Crushing Building	-D0-	-D0-	-D0-	-D0-
7	G. Sinter Cooler	-D0-	-D0-	-D0-	-D0-
	PAHARPUR COOLING TOWER				
1	PARADIP REFINERY PROJECT, PARADIP, ORISSA STATE, INDIA	PAHARPUR COOLING TOWER		DESIGN & DETAIL ENGINEERING OF STRUCTURAL , PIPING ETC	DESIGN & DETAIL ENGINEERING OF STRUCTURAL , PIPING ETC
2	MACHALLA	PAHARPUR COOLING TOWER		DETAIL ENGINEERING OF STRUCTURAL	DETAIL ENGINEERING OF STRUCTURAL
3	KINYEZE II 240MW CCPP	PAHARPUR COOLING TOWER		DETAIL ENGINEERING OF STRUCTURAL	DETAIL ENGINEERING OF STRUCTURAL
4	COMMISSIONING TO GAS TURBOGENERATOR, COMBINED CYCLE	PAHARPUR COOLING TOWER		DETAIL ENGINEERING OF STRUCTURAL	DETAIL ENGINEERING OF STRUCTURAL
5	BRIDGE_POWER_PROJECT-GHANA	PAHARPUR COOLING TOWER		DESIGN & DETAIL ENGINEERING OF STRUCTURAL , PIPING ETC	PIPING
6	STEAM DISTRIBUTION MANIFOLD	PAHARPUR COOLING TOWER		DESIGN & DETAIL ENGINEERING OF STRUCTURAL , PIPING ETC	PIPING
	MCPI				

LIST OF MAJOR JOBS, SUCCESSFULLY COMPLETED					
SL. No.	NAME OF THE PROJECT	CLIENT	APPROVAL AUTHORITY	TLCE'S RESPONSIBILITY	TYPE OF JOB
1	CHH-PIPERACK	MCC PTA INDIA CORP. PVT. LTD.		DETAIL ENGINEERING OF STRUCTUARAL , PIPING AND ISOMETRIC ETC	PIPING
2	CHH-LIME STORAGE SHED	MCC PTA INDIA CORP. PVT. LTD.		DETAIL ENGINEERING OF STRUCTUARAL	SHED
3	CHH-SUBSTATION	MCC PTA INDIA CORP. PVT. LTD.		DESIGN & DETAIL ENGINEERING OF CIVIL	DESIGN AND DETAIL ENGINEERING OF CIVIL AND STRUCTURAL JOBS
	18" PARAXYLENE PIPELINE EXTENSION TO NEW OTII JETTY INSIDE HALDIA DOCK COMPLEX, SYAMA PRASAD MOOKERJEE PORT	MCPI PVT. LTD., HALDIA		DESIGN & DETAIL ENGINEERING OF STRUCTUARAL , PIPING ETC	CIVIL & PIPING
	DGPS survey of 12 km pipe line from MCPI plant to Hadia dock inside.	MCPI PVT. LTD., HALDIA		survey	survey
	18" PARAXYLENE PIPELINE EXTENSION TO NEW OT-2 JETTY INSIDE HALDIA DOCK COMPLEX AT KOPT, WEST BENGAL.	MCPI PVT. LTD., HALDIA		design, detail engineering and site supervision	pipng, civil & structural
	Health study of all RCC structures at MCPI plant	MCPI PVT. LTD., HALDIA		NDT	civil-testing
	TATA METALIKS LTD.				
1	OFFICE BUILDING	TATA METALIKS DI PIPES LTD (FORMERLY: TATA METALIKS KUBOTA PIPES LTD.) SAMRAIPUR , KHRAGPUR	TATA METALIKS	DESIGN & DETAIL ENGINEERING	CIVIL
2	• COOLING TOWER • CORE STORAGE PLATFROM • FINISH LINE-2 • SILO & SILO SUPPORTING STRUCTURE • EXTENSION OF ZINC COATING SHED	TATA METALIKS DI PIPES LTD (FORMERLY: TATA METALIKS KUBOTA PIPES LTD.) SAMRAIPUR , KHRAGPUR	TATA METALIKS	DESIGN & DETAIL ENGINEERING	CIVIL & STRUCTURAL
3	CEMENT MIXING STATION	TATA METALIKS DI PIPES LTD (FORMERLY: TATA METALIKS KUBOTA PIPES LTD.) SAMRAIPUR , KHRAGPUR	TATA METALIKS	DESIGN & DETAIL ENGINEERING	CIVIL & STRUCTURAL
4	MELTING SHOP	TATA METALIKS DI PIPES LTD (FORMERLY: TATA METALIKS KUBOTA PIPES LTD.) SAMRAIPUR , KHRAGPUR	TATA METALIKS	DESIGN & DETAIL ENGINEERING	CIVIL & STRUCTURAL
5	COAL BUNKER	TATA METALIKS DI PIPES LTD (FORMERLY: TATA METALIKS KUBOTA PIPES LTD.) SAMRAIPUR , KHRAGPUR	TATA METALIKS	DESIGN & DETAIL ENGINEERING	CIVIL
6	PLATFORM	TATA METALIKS DI PIPES LTD (FORMERLY: TATA METALIKS KUBOTA PIPES LTD.) SAMRAIPUR , KHRAGPUR	TATA METALIKS	DESIGN & DETAIL ENGINEERING	CIVIL & STRUCTURAL
7	ETP	TATA METALIKS DI PIPES LTD (FORMERLY: TATA METALIKS KUBOTA PIPES LTD.) SAMRAIPUR , KHRAGPUR	TATA METALIKS	DESIGN & DETAIL ENGINEERING	CIVIL & STRUCTURAL
8	LPG SHED	TATA METALIKS DI PIPES LTD (FORMERLY: TATA METALIKS KUBOTA PIPES LTD.) SAMRAIPUR , KHRAGPUR	TATA METALIKS	DESIGN & DETAIL ENGINEERING	CIVIL & STRUCTURAL
9	• DE DUSTING SYSTEM • EXTENSION OF CORE SHOP & LADLE HEATING • LADLE HEATING EXTENSION	TATA METALIKS DI PIPES LTD (FORMERLY: TATA METALIKS KUBOTA PIPES LTD.) SAMRAIPUR , KHRAGPUR	TATA METALIKS	DESIGN & DETAIL ENGINEERING	CIVIL & STRUCTURAL
10	DE DUSTING SYSTEM FOR BLAST FURNACE	TATA METALIKS DI PIPES LTD (FORMERLY: TATA METALIKS KUBOTA PIPES LTD.) SAMRAIPUR , KHRAGPUR	TATA METALIKS	DESIGN & DETAIL ENGINEERING	CIVIL
11	DE DUSTING SYSTEM FOR BLAST FURNACE	TATA METALIKS DI PIPES LTD (FORMERLY: TATA METALIKS KUBOTA PIPES LTD.) SAMRAIPUR , KHRAGPUR	TATA METALIKS	DESIGN & DETAIL ENGINEERING	CIVIL
12	TROLLEY	TATA METALIKS DI PIPES LTD (FORMERLY: TATA METALIKS KUBOTA PIPES LTD.) SAMRAIPUR , KHRAGPUR	TATA METALIKS	DESIGN & DETAIL ENGINEERING	CIVIL
13	COAL SHED FOR P.C.I SYSTEM	TATA METALIKS DI PIPES LTD (FORMERLY: TATA METALIKS KUBOTA PIPES LTD.) SAMRAIPUR , KHRAGPUR	TATA METALIKS	DETAIL ENGINEERING	STRUCTURAL
14	FAN SUPPORTING STRUCTURE	TATA METALIKS DI PIPES LTD (FORMERLY: TATA METALIKS KUBOTA PIPES LTD.) SAMRAIPUR , KHRAGPUR	TATA METALIKS	DESIGN & DETAIL ENGINEERING	STRUCTURAL
15	CANTEEN	TATA METALIKS DI PIPES LTD (FORMERLY: TATA METALIKS KUBOTA PIPES LTD.) SAMRAIPUR , KHRAGPUR	TATA METALIKS	DESIGN & DETAIL ENGINEERING	CIVIL
16	ROAD	TATA METALIKS DI PIPES LTD (FORMERLY: TATA METALIKS KUBOTA PIPES LTD.) SAMRAIPUR , KHRAGPUR	TATA METALIKS	DESIGN & DETAIL ENGINEERING	CIVIL
17	HOPPER SUPPORTING STRUCTURE	TATA METALIKS DI PIPES LTD (FORMERLY: TATA METALIKS KUBOTA PIPES LTD.) SAMRAIPUR , KHRAGPUR	TATA METALIKS	DESIGN & DETAIL ENGINEERING	CIVIL & STRUCTURAL
18	HOPPER SUPPORTING STRUCTURE AT FINISHING-2	TATA METALIKS DI PIPES LTD (FORMERLY: TATA METALIKS KUBOTA PIPES LTD.) SAMRAIPUR , KHRAGPUR	TATA METALIKS	DESIGN & DETAIL ENGINEERING	CIVIL & STRUCTURAL
19	HOPPER SUPPORTING STRUCTURE AT FINISHING-3	TATA METALIKS DI PIPES LTD (FORMERLY: TATA METALIKS KUBOTA PIPES LTD.) SAMRAIPUR , KHRAGPUR	TATA METALIKS	DESIGN & DETAIL ENGINEERING	CIVIL & STRUCTURAL
20	VIRTICAL EXTENSION OF PI CANTEEN	TATA METALIKS DI PIPES LTD (FORMERLY: TATA METALIKS KUBOTA PIPES LTD.) SAMRAIPUR , KHRAGPUR	TATA METALIKS	DESIGN & DETAIL ENGINEERING	CIVIL & STRUCTURAL

LIST OF MAJOR JOBS, SUCCESSFULLY COMPLETED					
SL. No.	NAME OF THE PROJECT	CLIENT	APPROVAL AUTHORITY	TLCE'S RESPONSIBILITY	TYPE OF JOB
21	CABLE GALLERY (SOURAV MAITY)	TATA METALIKS DI PIPES LTD (FORMERLY: TATA METALIKS KUBOTA PIPES LTD.) SAMRAIPUR , KHRAGPUR	TATA METALIKS	DESIGN & DETAIL ENGINEERING	CIVIL & STRUCTURAL
22	CABLE GALLERY (MOLOY DAS)	TATA METALIKS DI PIPES LTD (FORMERLY: TATA METALIKS KUBOTA PIPES LTD.) SAMRAIPUR , KHRAGPUR	TATA METALIKS	DESIGN & DETAIL ENGINEERING	CIVIL & STRUCTURAL
23	HOPPER STRUCTURE	TATA METALIKS DI PIPES LTD (FORMERLY: TATA METALIKS KUBOTA PIPES LTD.) SAMRAIPUR , KHRAGPUR	TATA METALIKS	DESIGN & DETAIL ENGINEERING	STRUCTURAL LAYOUT
24	HOLD REPAIRING SHED	TATA METALIKS DI PIPES LTD (FORMERLY: TATA METALIKS KUBOTA PIPES LTD.) SAMRAIPUR , KHRAGPUR	TATA METALIKS	DESIGN & DETAIL ENGINEERING	STRUCTURAL LAYOUT
25	CABLE GALLERY-2 (MOLOY DAS)	TATA METALIKS DI PIPES LTD (FORMERLY: TATA METALIKS KUBOTA PIPES LTD.) SAMRAIPUR , KHRAGPUR	TATA METALIKS	DESIGN & DETAIL ENGINEERING	STRUCTURAL
26	CONNECTING PLATFORM	TATA METALIKS DI PIPES LTD (FORMERLY: TATA METALIKS KUBOTA PIPES LTD.) SAMRAIPUR , KHRAGPUR	TATA METALIKS	DESIGN & DETAIL ENGINEERING	CIVIL & STRUCTURAL
27	FL3 SHED EXTENSION	TATA METALIKS DI PIPES LTD (FORMERLY: TATA METALIKS KUBOTA PIPES LTD.) SAMRAIPUR , KHRAGPUR	TATA METALIKS	DESIGN & DETAIL ENGINEERING	CIVIL
28	• BFG SINTER PLANT • EXISTING CABLE GALLERY • PCI-SUBSTATION	TATA METALIKS DI PIPES LTD (FORMERLY: TATA METALIKS KUBOTA PIPES LTD.) SAMRAIPUR , KHRAGPUR	TATA METALIKS	DESIGN & DETAIL ENGINEERING	CIVIL & STRUCTURAL
29	• AIR BLOWER • FILTER TANK	TATA METALIKS DI PIPES LTD (FORMERLY: TATA METALIKS KUBOTA PIPES LTD.) SAMRAIPUR , KHRAGPUR	TATA METALIKS	DESIGN & DETAIL ENGINEERING	CIVIL
30	• ELECTRICAL ROOM & PUMP HOUSE • FIRE PUMP HOUSE • WATER RESERVOIR • COOLING TOWER	TATA METALIKS DI PIPES LTD (FORMERLY: TATA METALIKS KUBOTA PIPES LTD.) SAMRAIPUR , KHRAGPUR	TATA METALIKS	DESIGN & DETAIL ENGINEERING	CIVIL & STRUCTURAL
31	BFG AREA	TATA METALIKS DI PIPES LTD (FORMERLY: TATA METALIKS KUBOTA PIPES LTD.) SAMRAIPUR , KHRAGPUR	TATA METALIKS	DESIGN & DETAIL ENGINEERING	CIVIL & STRUCTURAL
32	• DI STORE • DISPATCH OFFICE • PI CANTEEN • PROJECT OFFICE	TATA METALIKS DI PIPES LTD (FORMERLY: TATA METALIKS KUBOTA PIPES LTD.) SAMRAIPUR , KHRAGPUR	TATA METALIKS	DESIGN & DETAIL ENGINEERING	CIVIL & STRUCTURAL
33	NEW FIRE HYDRANT LINE	TATA METALIKS DI PIPES LTD (FORMERLY: TATA METALIKS KUBOTA PIPES LTD.) SAMRAIPUR , KHRAGPUR	TATA METALIKS	DESIGN & DETAIL ENGINEERING	CIVIL & STRUCTURAL
34	CULVERT	TATA METALIKS DI PIPES LTD (FORMERLY: TATA METALIKS KUBOTA PIPES LTD.) SAMRAIPUR , KHRAGPUR	TATA METALIKS	DESIGN & DETAIL ENGINEERING	CIVIL
35	• COLD ZONE • HOT ZONE	TATA METALIKS DI PIPES LTD (FORMERLY: TATA METALIKS KUBOTA PIPES LTD.) SAMRAIPUR , KHRAGPUR	TATA METALIKS	DESIGN & DETAIL ENGINEERING	STRUCTURAL
36	ZINC COATING MACHINE	TATA METALIKS DI PIPES LTD (FORMERLY: TATA METALIKS KUBOTA PIPES LTD.) SAMRAIPUR , KHRAGPUR	TATA METALIKS	DESIGN & DETAIL ENGINEERING	CIVIL
37	EFFLUENT TREATMENT PLANT	TATA METALIKS DI PIPES LTD (FORMERLY: TATA METALIKS KUBOTA PIPES LTD.) SAMRAIPUR , KHRAGPUR	TATA METALIKS	DESIGN & DETAIL ENGINEERING	STRUCTURAL
38	DRAINAGE	TATA METALIKS DI PIPES LTD (FORMERLY: TATA METALIKS KUBOTA PIPES LTD.) SAMRAIPUR , KHRAGPUR	TATA METALIKS	DESIGN & DETAIL ENGINEERING	CIVIL
39	SAND HOPPER	TATA METALIKS DI PIPES LTD (FORMERLY: TATA METALIKS KUBOTA PIPES LTD.) SAMRAIPUR , KHRAGPUR	TATA METALIKS	DESIGN & DETAIL ENGINEERING	CIVIL & STRUCTURAL
40	CEMENT MIXING	TATA METALIKS DI PIPES LTD (FORMERLY: TATA METALIKS KUBOTA PIPES LTD.) SAMRAIPUR , KHRAGPUR	TATA METALIKS	DESIGN & DETAIL ENGINEERING	CIVIL & STRUCTURAL
41	RMHS SHED	TATA METALIKS DI PIPES LTD (FORMERLY: TATA METALIKS KUBOTA PIPES LTD.) SAMRAIPUR , KHRAGPUR	TATA METALIKS	DESIGN & DETAIL ENGINEERING	STRUCTURAL
42	• NEW BFG LINE-700Ø DUCT • NEW GIRDER • BRIDGE-1 • BRIDGE-2 • BRIDGE-3 • BRIDGE-4	TATA METALIKS DI PIPES LTD (FORMERLY: TATA METALIKS KUBOTA PIPES LTD.) SAMRAIPUR , KHRAGPUR	TATA METALIKS	DESIGN & DETAIL ENGINEERING OF STRUCTUARAL ,CIVIL, PIPING ETC AT DIFFERENT AREA.	CIVIL & STRUCTURAL
43	LPG SHED AT CENTRAL KITCHEN.	TATA METALIKS DI PIPES LTD (FORMERLY: TATA METALIKS KUBOTA PIPES LTD.) SAMRAIPUR , KHRAGPUR	TATA METALIKS	DESIGN & DETAIL ENGINEERING	CIVIL & STRUCTURAL
44	NEW CONVEYOR	TATA METALIKS DI PIPES LTD (FORMERLY: TATA METALIKS KUBOTA PIPES LTD.) SAMRAIPUR , KHRAGPUR	TATA METALIKS	DESIGN & DETAIL ENGINEERING	CIVIL , STRUCTURAL & MECHANICAL
45	CABLE BRIDGE AT SINTER PLANT	TATA METALIKS DI PIPES LTD (FORMERLY: TATA METALIKS KUBOTA PIPES LTD.) SAMRAIPUR , KHRAGPUR	TATA METALIKS	DESIGN & DETAIL ENGINEERING	CIVIL & STRUCTURAL
46	ZINC COATING EXISTING SHED	TATA METALIKS DI PIPES LTD (FORMERLY: TATA METALIKS KUBOTA PIPES LTD.) SAMRAIPUR , KHRAGPUR	TATA METALIKS	DESIGN & DETAIL ENGINEERING	STRUCTURAL

LIST OF MAJOR JOBS, SUCCESSFULLY COMPLETED					
SL. No.	NAME OF THE PROJECT	CLIENT	APPROVAL AUTHORITY	TLCE'S RESPONSIBILITY	TYPE OF JOB
47	PNEUMATIC LINE, DRYER SHED, AIR RECEIVER ETC...	TATA METALIKS DI PIPES LTD (FORMERLY: TATA METALIKS KUBOTA PIPES LTD.) SAMRAIPUR , KHRAGPUR	TATA METALIKS	DESIGN & DETAIL ENGINEERING	Piping, structural & civil
48	CONVEYOR MODIFICATION AT SINTER PLANT	TATA METALIKS DI PIPES LTD (FORMERLY: TATA METALIKS KUBOTA PIPES LTD.) SAMRAIPUR , KHRAGPUR	TATA METALIKS	DESIGN & DETAIL ENGINEERING	CONVEYORS, HAEAD FRAME, TAIL FRAME, STRINGERS, SHORT POSTS, TECHNOLOGICAL STRUCTURES, PLATFORM, LADDER, STAIR CASE
49	S-1 NEW CONVEYOR	TATA METALIKS DI PIPES LTD (FORMERLY: TATA METALIKS KUBOTA PIPES LTD.) SAMRAIPUR , KHRAGPUR	TATA METALIKS	DESIGN & DETAIL ENGINEERING	CONVEYORS, HAEAD FRAME, TAIL FRAME, STRINGERS, SHORT POSTS, TECHNOLOGICAL STRUCTURES, PLATFORM, LADDER, STAIR CASE, CIVIL & STRUCTURAL COMPLETE
	TEREX				
1	MTC 1000	M/S.-TEREX INDIA PRIVATE LTD. PLOT NO: E18,EXPANSION-II, PHASE-SIPCOT, KRISHNAGIRI ROAD . HOSUR- 635109 , INDIA.	M/S.-TEREX INDIA PRIVATE LTD.	DESIGN & DETAIL ENGINEERING	CIVIL
2	SUPPORTING STRUCTURE FOR MTC 1300	M/S.-TEREX INDIA PRIVATE LTD. PLOT NO: E18,EXPANSION-II, PHASE-SIPCOT, KRISHNAGIRI ROAD . HOSUR- 635109 , INDIA.	M/S.-TEREX INDIA PRIVATE LTD.	DESIGN & DETAIL ENGINEERING	CIVIL & STRUCTURAL
3	TUNNEL	M/S.-TEREX INDIA PRIVATE LTD. PLOT NO: E18,EXPANSION-II, PHASE-SIPCOT, KRISHNAGIRI ROAD . HOSUR- 635109 , INDIA.	M/S.-TEREX INDIA PRIVATE LTD.	DESIGN & DETAIL ENGINEERING	CIVIL & STRUCTURAL
4	SOIL PREPARATION FOR SURGE BIN	M/S.-TEREX INDIA PRIVATE LTD. PLOT NO: E18,EXPANSION-II, PHASE-SIPCOT, KRISHNAGIRI ROAD . HOSUR- 635109 , INDIA.	M/S.-TEREX INDIA PRIVATE LTD.	DESIGN & DETAIL ENGINEERING	CIVIL
5	PAN FEEDER	M/S.-TEREX INDIA PRIVATE LTD. PLOT NO: E18,EXPANSION-II, PHASE-SIPCOT, KRISHNAGIRI ROAD . HOSUR- 635109 , INDIA.	M/S.-TEREX INDIA PRIVATE LTD.	DESIGN & DETAIL ENGINEERING	CIVIL
6	MIJ1175	M/S.-TEREX INDIA PRIVATE LTD. PLOT NO: E18,EXPANSION-II, PHASE-SIPCOT, KRISHNAGIRI ROAD . HOSUR- 635109 , INDIA.	M/S.-TEREX INDIA PRIVATE LTD.	DESIGN & DETAIL ENGINEERING	CIVIL
7	RETAINING WALL	M/S.-TEREX INDIA PRIVATE LTD. PLOT NO: E18,EXPANSION-II, PHASE-SIPCOT, KRISHNAGIRI ROAD . HOSUR- 635109 , INDIA.	M/S.-TEREX INDIA PRIVATE LTD.	DESIGN & DETAIL ENGINEERING	CIVIL
8	MVP550X	M/S.-TEREX INDIA PRIVATE LTD. PLOT NO: E18,EXPANSION-II, PHASE-SIPCOT, KRISHNAGIRI ROAD . HOSUR- 635109 , INDIA.	M/S.-TEREX INDIA PRIVATE LTD.	DESIGN & DETAIL ENGINEERING	CIVIL & STRUCTURAL
9	JAI BABA BAIDYANATH	M/S.-TEREX INDIA PRIVATE LTD. PLOT NO: E18,EXPANSION-II, PHASE-SIPCOT, KRISHNAGIRI ROAD . HOSUR- 635109 , INDIA.	M/S.-TEREX INDIA PRIVATE LTD.	DESIGN & DETAIL ENGINEERING	CIVIL
10	HOPPER CAPACITY 50 CUM	M/S.-TEREX INDIA PRIVATE LTD. PLOT NO: E18,EXPANSION-II, PHASE-SIPCOT, KRISHNAGIRI ROAD . HOSUR- 635109 , INDIA.	M/S.-TEREX INDIA PRIVATE LTD.	DESIGN & DETAIL ENGINEERING	CIVIL
11	HOPPER CAPACITY 50 CUM	M/S.-TEREX INDIA PRIVATE LTD. PLOT NO: E18,EXPANSION-II, PHASE-SIPCOT, KRISHNAGIRI ROAD . HOSUR- 635109 , INDIA.	M/S.-TEREX INDIA PRIVATE LTD.	DESIGN & DETAIL ENGINEERING	CIVIL & STRUCTURAL
12	SUPPORTING STRUCTURE FOR TGS420 & MSF30	M/S.-TEREX INDIA PRIVATE LTD. PLOT NO: E18,EXPANSION-II, PHASE-SIPCOT, KRISHNAGIRI ROAD . HOSUR- 635109 , INDIA.	M/S.-TEREX INDIA PRIVATE LTD.	DESIGN & DETAIL ENGINEERING	CIVIL & STRUCTURAL
13	MVP550X & MSF30	M/S.-TEREX INDIA PRIVATE LTD. PLOT NO: E18,EXPANSION-II, PHASE-SIPCOT, KRISHNAGIRI ROAD . HOSUR- 635109 , INDIA.	M/S.-TEREX INDIA PRIVATE LTD.	DESIGN & DETAIL ENGINEERING	CIVIL & STRUCTURAL
14	HOPPER FOOTING	M/S.-TEREX INDIA PRIVATE LTD. PLOT NO: E18,EXPANSION-II, PHASE-SIPCOT, KRISHNAGIRI ROAD . HOSUR- 635109 , INDIA.	M/S.-TEREX INDIA PRIVATE LTD.	DESIGN & DETAIL ENGINEERING	CIVIL
15	WHEELED CONE 1300	M/S.-TEREX INDIA PRIVATE LTD. PLOT NO: E18,EXPANSION-II, PHASE-SIPCOT, KRISHNAGIRI ROAD . HOSUR- 635109 , INDIA.	M/S.-TEREX INDIA PRIVATE LTD.	DESIGN & DETAIL ENGINEERING	CIVIL
16	MJ55 WITH TLH	M/S.-TEREX INDIA PRIVATE LTD. PLOT NO: E18,EXPANSION-II, PHASE-SIPCOT, KRISHNAGIRI ROAD . HOSUR- 635109 , INDIA.	M/S.-TEREX INDIA PRIVATE LTD.	DESIGN & DETAIL ENGINEERING	CIVIL

LIST OF MAJOR JOBS, SUCCESSFULLY COMPLETED					
SL. No.	NAME OF THE PROJECT	CLIENT	APPROVAL AUTHORITY	TLCE'S RESPONSIBILITY	TYPE OF JOB
17	TRUCK DUMP HOPPER & STRUCTURE (CAP.=20CUM.)	M/S.-TEREX INDIA PRIVATE LTD. PLOT NO: E18,EXPANSION-II, PHASE-SIPCOT, KRISHNAGIRI ROAD . HOSUR- 635109 , INDIA.	M/S.-TEREX INDIA PRIVATE LTD.	DESIGN & DETAIL ENGINEERING	CIVIL
18	TRUCK DUMP HOPPER & STRUCTURE (CAP.=20CUM.)	M/S.-TEREX INDIA PRIVATE LTD. PLOT NO: E18,EXPANSION-II, PHASE-SIPCOT, KRISHNAGIRI ROAD . HOSUR- 635109 , INDIA.	M/S.-TEREX INDIA PRIVATE LTD.	DESIGN & DETAIL ENGINEERING	CIVIL
19	MTC 1000 & SURGE BINS	M/S.-TEREX INDIA PRIVATE LTD. PLOT NO: E18,EXPANSION-II, PHASE-SIPCOT, KRISHNAGIRI ROAD . HOSUR- 635109 , INDIA.	M/S.-TEREX INDIA PRIVATE LTD.	DESIGN & DETAIL ENGINEERING	CIVIL
20	MTC 1000 & SURGE BINS	M/S.-TEREX INDIA PRIVATE LTD. PLOT NO: E18,EXPANSION-II, PHASE-SIPCOT, KRISHNAGIRI ROAD . HOSUR- 635109 , INDIA.	M/S.-TEREX INDIA PRIVATE LTD.	DESIGN & DETAIL ENGINEERING	CIVIL
21	FOUNDATION FOR CONVEYOR BC-3	M/S.-TEREX INDIA PRIVATE LTD. PLOT NO: E18,EXPANSION-II, PHASE-SIPCOT, KRISHNAGIRI ROAD . HOSUR- 635109 , INDIA.	M/S.-TEREX INDIA PRIVATE LTD.	DESIGN & DETAIL ENGINEERING	CIVIL
22	JAI BABA BAIDYANATH	M/S.-TEREX INDIA PRIVATE LTD. PLOT NO: E18,EXPANSION-II, PHASE-SIPCOT, KRISHNAGIRI ROAD . HOSUR- 635109 , INDIA.	M/S.-TEREX INDIA PRIVATE LTD.	DESIGN & DETAIL ENGINEERING	CIVIL
23	SA LTD.	M/S.-TEREX INDIA PRIVATE LTD. PLOT NO: E18,EXPANSION-II, PHASE-SIPCOT, KRISHNAGIRI ROAD . HOSUR- 635109 , INDIA.	M/S.-TEREX INDIA PRIVATE LTD.	DESIGN & DETAIL ENGINEERING	CIVIL
24	SA LTD.	M/S.-TEREX INDIA PRIVATE LTD. PLOT NO: E18,EXPANSION-II, PHASE-SIPCOT, KRISHNAGIRI ROAD . HOSUR- 635109 , INDIA.	M/S.-TEREX INDIA PRIVATE LTD.	DESIGN & DETAIL ENGINEERING	CIVIL
25	HOPPER FOUNDATION	M/S.-TEREX INDIA PRIVATE LTD. PLOT NO: E18,EXPANSION-II, PHASE-SIPCOT, KRISHNAGIRI ROAD . HOSUR- 635109 , INDIA.	M/S.-TEREX INDIA PRIVATE LTD.	DESIGN & DETAIL ENGINEERING	CIVIL
26	DR INFRA	M/S.-TEREX INDIA PRIVATE LTD. PLOT NO: E18,EXPANSION-II, PHASE-SIPCOT, KRISHNAGIRI ROAD . HOSUR- 635109 , INDIA.	M/S.-TEREX INDIA PRIVATE LTD.	DESIGN & DETAIL ENGINEERING	STRUCTURAL
27	RAJSHELA	M/S.-TEREX INDIA PRIVATE LTD. PLOT NO: E18,EXPANSION-II, PHASE-SIPCOT, KRISHNAGIRI ROAD . HOSUR- 635109 , INDIA.	M/S.-TEREX INDIA PRIVATE LTD.	DESIGN & DETAIL ENGINEERING	CIVIL
28	SRINIVASA CRUSHER	M/S.-TEREX INDIA PRIVATE LTD. PLOT NO: E18,EXPANSION-II, PHASE-SIPCOT, KRISHNAGIRI ROAD . HOSUR- 635109 , INDIA.	M/S.-TEREX INDIA PRIVATE LTD.	DESIGN & DETAIL ENGINEERING	CIVIL
29	MTJ1175	M/S.-TEREX INDIA PRIVATE LTD. PLOT NO: E18,EXPANSION-II, PHASE-SIPCOT, KRISHNAGIRI ROAD . HOSUR- 635109 , INDIA.	M/S.-TEREX INDIA PRIVATE LTD.	DESIGN & DETAIL ENGINEERING	CIVIL
30	CONTAINER FRAME	M/S.-TEREX INDIA PRIVATE LTD. PLOT NO: E18,EXPANSION-II, PHASE-SIPCOT, KRISHNAGIRI ROAD . HOSUR- 635109 , INDIA.	M/S.-TEREX INDIA PRIVATE LTD.	DESIGN & DETAIL ENGINEERING	CIVIL
31	MJ55 GA WITH TLH	M/S.-TEREX INDIA PRIVATE LTD. PLOT NO: E18,EXPANSION-II, PHASE-SIPCOT, KRISHNAGIRI ROAD . HOSUR- 635109 , INDIA.	M/S.-TEREX INDIA PRIVATE LTD.	DESIGN & DETAIL ENGINEERING	CIVIL
32	GA & RC DETAIL OF FOUNDATION FOR CONTROL STATION	M/S.-TEREX INDIA PRIVATE LTD. PLOT NO: E18,EXPANSION-II, PHASE-SIPCOT, KRISHNAGIRI ROAD . HOSUR- 635109 , INDIA.	M/S.-TEREX INDIA PRIVATE LTD.	DESIGN & DETAIL ENGINEERING	CIVIL
33	GA & RC DETAIL OF FOUNDATION FOR DAY TANK	M/S.-TEREX INDIA PRIVATE LTD. PLOT NO: E18,EXPANSION-II, PHASE-SIPCOT, KRISHNAGIRI ROAD . HOSUR- 635109 , INDIA.	M/S.-TEREX INDIA PRIVATE LTD.	DESIGN & DETAIL ENGINEERING	CIVIL
	ALSTOM				
1	COUPLING & DE-COUPLING SHED	MADHEPURA ELECTRIC LOCOMOTIVE PVT. LTD		DESIGN & DETAIL ENGINEERING	CIVIL & STRUCTURAL
2	GA GOLIATH CRANE FDNS.	MELT-O-THERM FURNACES PVT. LTD. KAKINARA, NORTH 24 PARGANAS		DETAIL ENGINEERING	CIVIL
	B.P CONSTRUCTION				
1	G.A & MARKING ARRANGEMENT OF ROOF OF TOILET	BP CONSTRUCTION		DETAIL ENGINEERING	STRUCTURAL
2	BOUNDARY WALL ARCHITECTURAL GA OF BOUNDARY WALL	M/s. B.P. CONSTRUCTION	INDIAN OIL CORPORATION(MARK.DIV.)	DESIGN & DETAIL ENGINEERING	STRUCTURAL

LIST OF MAJOR JOBS, SUCCESSFULLY COMPLETED					
SL. No.	NAME OF THE PROJECT	CLIENT	APPROVAL AUTHORITY	TLCE'S RESPONSIBILITY	TYPE OF JOB
3	STRUCTURAL ARRANGMENT OF SHED EXTENSION	M/s. B.P. CONSTRUCTION		DESIGN & DETAIL ENGINEERING	STRUCTURAL
4	GA & RC DETAIL OF CULVERT 3000 WIDE	M/s. B.P. CONSTRUCTION		DESIGN & DETAIL ENGINEERING	CIVIL
5	GA & RC DETAIL OF CULVERT 3600 WIDE	M/s. B.P. CONSTRUCTION		DESIGN & DETAIL ENGINEERING	CIVIL
6	G.A OF FOUNDATION FOR JUMBO 3D OPTIMA	M/s. B.P. CONSTRUCTION	TCI SUPPLY CHAIN SOLUTIONS	DESIGN & DETAIL ENGINEERING	CIVIL
7	LPG AREA OFFICE AT KHARAGPUR, WEST BENGAL	M/s. B.P. CONSTRUCTION	INDIAN OIL CORPORATION LIMITED	DETAIL ENGINEERING	DETAILS OF STEEL ROOFING.
8	DEVELOPMENT OF GATE COMPLEX AT ENTRY/EXIT POINT FROM NH-6 -TO VIDYASAGAR INDUSTRIAL PARK, KHARAGPUR	M/s. B.P. CONSTRUCTION	WEST BENGAL INDUSTRIAL DEVELOPMENT CORPORATION LTD (WBIDC)	DETAIL ENGINEERING	STRUCTURAL
9	FILLED CYLINDER STORAGE SHED AT KHARAGPUR (WB)	INDIAN OIL CORPORATION LIMITED (IOCL)	Development Consultants Pvt. Ltd. 24 Park Street, Kolkata - 700016, India	DESIGN & DETAIL ENGINEERING	CIVIL & STRUCTURAL
	BUMER GROUP				
1	BMA PHASE - I AREA (ZONE-2)	BASU CONSULTING ENGINEERS	GMR Hyderabad International Airport Ltd.	DETAIL ENGINEERING	STRUCTURAL
2	TERMINAL 2 Bangalore International Airport	BASU CONSULTING ENGINEERS	L & T CONSTRUCTION BUILDING & FACTORIES	DETAIL ENGINEERING	STRUCTURAL
3	BANGLADESH-INDIA FRIENDSHIP POWER COMPANY PVT. LTD, DHAKA, BANGLADESH 2x660 MW MAITREE STPP, RAMPAL, BANGLADESH	BASU CONSULTING ENGINEERS	BHARAT HEAVY ELECTRICALS LTD. INDUSTRIAL SYSTEMS GROUP, BANGALORE	DETAIL ENGINEERING	STAIR STRUCTURE , JUNCTION HOUSE
	BRIDGE				
1	I/C BRIDGE 38.000M. SPAN PHASE-VIII (3RD TRANCHE) UNDER WORLD BANK FUNDING PACKAGE No. MG/01/58.		STATE RURAL ROADS DEVELOPMENT AGENCY PMGS,MEGHALAYA	DETAIL ENGINEERING	BRIDGE 38.000M. SPAN
2	CONSTRUCTION OF R.C.C BRIDGE NO. 12/1 OVER RIVER KAPILI ON AMSOI CHAPARMUKH ROAD	GOVERNMENT OF ASSAM PUBLIC WORKS DEPARTMENT	Modern Construction Company Radha Kunj ,near AMDC Ltd, Janapriya Path, Dispur, Guwahati- 781006, Assam	DETAIL ENGINEERING	BRIDGE 46.450M. SPAN
3	CONSTRUCTION OF R.C.C BRIDGE NO. 12/1 OVER RIVER KAPILI ON AMSOI CHAPARMUKH ROAD	GOVERNMENT OF ASSAM PUBLIC WORKS DEPARTMENT	Modern Construction Company Radha Kunj ,near AMDC Ltd, Janapriya Path, Dispur, Guwahati- 781006, Assam	DETAIL ENGINEERING	BRIDGE 30.725M. SPAN
4	CONSTRUCTION OF 55.90 MTR SPAN PMT BRIDGE OVER PAGHLA NALLAH AT KM 137.150 ON TUENSANG-MON-NAGINIMORA ROAD IN NAGALAND	M/S SUNSHINE OVERSEAS PVT LTD, 3 FLOOR SWAPAN ARCADE BUILDING,OPPOSITE OLD DOOARS BUS STAND BIDHAN ROAD, SILIGURI-734 001 WEST BENGAL		DETAIL ENGINEERING	BRIDGE 55.900M. SPAN
5	CABLE BRIDGE (40M.+100M.+40M.)	MR. KISHORE ROY		DETAIL ENGINEERING	STRUCTURAL
	GLASS FACTORY				
1	NEW GLASS FACTORY	M/S GLAZE ARCHITECTURE PVT LTD . BAGANI PARA . MOYNAGORE . ASUTI .	M/S GLAZE ARCHITECTURE PVT LTD . BAGANI PARA . MOYNAGORE . ASUTI .	DESIGN & DETAIL ENGINEERING	CIVIL & STRUCTURAL
	EAST CALCUTTA GIRLS COLLEGE, LAKE TOWN				
1	G+2 STORIED BUILDING (CLASS ROOMS & AUDITORIUM)	EAST CALCUTTA GIRLS COLLEGE, LAKE TOWN P-237, BLOCK-'B', LAKE TOWN LINK ROAD, KOL.- 700 089	EAST CALCUTTA GIRLS COLLEGE, LAKE TOWN P-237, BLOCK-'B', LAKE TOWN LINK ROAD, KOL.- 700 089	DESIGN & DETAIL ENGINEERING	CIVIL & STRUCTURAL
	ILFS-1_SCAFFOLDING				
1	ANS3: "CONSTRUCTION OF SEVEN (07) STATIONS FROM SUB CBD-1 TO TITUMIR IN NEW GARIA - AIRPORT METRO CORRIDOR OF KOLKATA METRO LINE"	RAIL VIKASH NIGAM LIMITED	IL&FS CONSTRUCTION AND COMPANY LIMITED	DESIGN & DETAIL ENGINEERING	DESIGN OF STAGING FOR METRO STATION
	KEI INDUSTRIES LTD NEW DELHI 110020				
1	33/11 kV New Ss OF BIDHANNAGAR	KEI INDUSTRIES LTD NEW DELHI 110020	WBSEDCL	DESIGN & DETAIL ENGINEERING	CIVIL
2	33/11 kV New Ss OF LARICA	KEI INDUSTRIES LTD NEW DELHI 110020	WBSEDCL	DESIGN & DETAIL ENGINEERING	CIVIL
	LAL GUFFA PROJECTS & SERVICES				
1	SAMBALPUR TELCO FACILITIES	LAL GUFFA PROJECTS & SERVICES	RELIANCE JIO INFOCOMM LIMITED	DETAIL ENGINEERING	STRUCTURAL
	MELT-O- THERM FURNACE				
1	EXTENSION OF SHED	MELT-O-THERM FURNACES PVT. LTD.	MELT-O-THERM FURNACES PVT. LTD.	DESIGN & DETAIL ENGINEERING	CIVIL & STRUCTURAL
	NAYAK ENGINEERS				
1	TCS IT SEZ RAJARHAT, KOLKATA	NAYAK ENGINEERS	TATA CONSULTANCY SERVICES	DETAIL ENGINEERING	STRUCTURAL
2	BANQUET HALL	NAYAK ENGINEERS		DESIGN & DETAIL ENGINEERING	STRUCTURAL
3	OFFICE BUILDING	NAYAK ENGINEERS		DESIGN & DETAIL ENGINEERING	STRUCTURAL
4	GATE-1	NAYAK ENGINEERS		DESIGN & DETAIL ENGINEERING	CIVIL
5	TCS IT SEZ RAJARHAT, KOLKATA	NAYAK ENGINEERS	TATA CONSULTANCY SERVICES	DETAIL ENGINEERING	SOUTH GUARD HOUSE
6	TCS IT SEZ RAJARHAT, KOLKATA	NAYAK ENGINEERS	TATA CONSULTANCY SERVICES	DETAIL ENGINEERING	NORTH GUARD HOUSE
7	EXTENSION OF SHED AT BHATTANAGAR	NAYAK ENGINEERS	KISHOK INDUSTRIES PVT. LTD. 11, BRABOURNE ROAD KOLKATA- 700001, INDIA	DETAIL ENGINEERING	STRUCTURAL

LIST OF MAJOR JOBS, SUCCESSFULLY COMPLETED					
SL. No.	NAME OF THE PROJECT	CLIENT	APPROVAL AUTHORITY	TLCE'S RESPONSIBILITY	TYPE OF JOB
8	BHATTANAGAR LATHE SHOP	NAYAK ENGINEERS	KISHOK INDUSTRIES PVT. LTD. 11, BRABOURNE ROAD KOLKATA-700001, INDIA	DETAIL ENGINEERING	STRUCTURAL
9	EXTENSION OF SHED II AT BHATTANAGAR	NAYAK ENGINEERS	KISHOK INDUSTRIES PVT. LTD. 11, BRABOURNE ROAD KOLKATA-700001, INDIA	DETAIL ENGINEERING	STRUCTURAL
10	EXTENSION OF SHED III AT BHATTANAGAR	NAYAK ENGINEERS	KISHOK INDUSTRIES PVT. LTD. 11, BRABOURNE ROAD KOLKATA-700001, INDIA	DETAIL ENGINEERING	STRUCTURAL
11	Shed-1	NAYAK ENGINEERS	KISHOK INDUSTRIES PVT. LTD. 11, BRABOURNE ROAD KOLKATA-700001, INDIA	DETAIL ENGINEERING	STRUCTURAL
12	KOL-SUNRAY HOUSING PROJECT	NAYAK ENGINEERS	SHAPOORJI PALLONJI & CO. PVT. LTD.	DETAIL ENGINEERING	STRUCTURAL
13	EXTENSION OF SHED IV AT BHATTANAGAR	NAYAK ENGINEERS	KISHOK INDUSTRIES PVT. LTD. 11, BRABOURNE ROAD KOLKATA-700001, INDIA	DETAIL ENGINEERING	STRUCTURAL
14	BHATTANAGAR BALANCING HOIST	NAYAK ENGINEERS	KISHOK INDUSTRIES PVT. LTD. 11, BRABOURNE ROAD KOLKATA-700001, INDIA	DETAIL ENGINEERING	STRUCTURAL
15	NEW OFFICE BUILDING	NAYAK ENGINEERS	KISHOK INDUSTRIES PVT. LTD. 11, BRABOURNE ROAD KOLKATA-700001, INDIA	DETAIL ENGINEERING	STRUCTURAL
16	UTALIKA	NAYAK ENGINEERS	SHAPOORJI PALOONJI AND COMPANY MUKUNDAPUR, KOLKATA – 700099.	DETAIL ENGINEERING	STRUCTURAL
17	Extension of Shed II	NAYAK ENGINEERS	SHAPOORJI PALOONJI AND COMPANY MUKUNDAPUR, KOLKATA – 700099.	DETAIL ENGINEERING	STRUCTURAL
	M/S.TRADETECH.				
1	MODIFICATION OF CIVIL & STEEL STRUCTURE AT SALIMAR WIRE,UTTARPARA	M/S.TRADETECH. 18, SIR R.N.MUKHERJEE ROAD, KOLKATA-700001 WEST BENGAL,INDIA		DETAIL ENGINEERING	STRUCTURAL CRANE GIRDER
	YUKEN INDIA LIMITED				
1	Hydraulic Fresh Oil Storage & Filtration Unit CIVIL ASSIGNMENT DRAWING	YUKEN INDIA LIMITED.	TATA STEEL LIMITED	CIVIL ASSIGNMENT DRAWINGS AND PIPING	CIVIL & PIPING

SOME OF OUR WORK ORDERS

KHARAGPUR - 721 301

(REGD. OFFICE : JUBILEE BUILDING, 45, MUSEUM ROAD, BANGALORE - 560025)

WORK ORDER

M/S. TLC ENGINEERING CONSULTANT		Code: T836806	
22 VIVEKANANDA PARK THAKURPUKAR KOLKATA		WORK ORDER NO. KGP171834	DATE 03.09.2017
		ENQ. NO. QWO/	DATE
		BUDGET CODE TK17037	B.C. NO.
West Bengal India. PIN: 700063		PROJECT CODE PB/TC/1834	

Please contact..... within **TWO DAYS** on receipt of this **WORK ORDER** and start work, in accordance with the agreed programme drawnout in consultation with him. Kindly obtain safety clearance before starting the job

The following shall be deemed to form, read & be interpreted as part of the whole agreement :-

(a) The specifications, Bill of Quantities & Drawings. (b) The General Terms and Condition of Contract of Tata Hitachi. (c) The special Terms & Condition of Contracts of Tata Hitachi for Civil (Town) / Civil (Works) / Electrical / Mechanical / Structural, as applicable to this work order. (d) The Safety/Security Rules and Regulation of THCM.

The final bill must be submitted within 60 days after completion of the job. The executing department will forward the bill to **Manager (Finance)** directly along with your performance report. The Work Order No. must be quoted in all correspondence.

JOB DESCRIPTION

SL ITEM NO.	QTY	RATE/UNIT	TOTAL IN INR
ITEM DESCRIPTION			

1 Work contract for services
for the design stability of building
projects of extension for three
storied of existing Guest House.

1.000

180000.00

180000.00

Scope of work :

1. Preparation of design calculation of civil foundation;
2. Preparation of design calculation of super structure considering total 3 fl. building with the help of staad;
3. Preparation of feasibility report;
4. Preparation of working & structural drawing.

Payment terms :

50% on submission of all design drawings

40% on submission of balance as per the

scope of work and remaining 10% to be paid after completion of the project.

P.S. : Bills to be certified only on removal of all scraps / debris generated during the execution of the order on the scrap yard low lying area or as per the advice of the executing department.

Safety is the Highest priority in Tata Hitachi. Wearing of Safety Helmet & Shoes inside the works & the use of PPE is must while working.

TOTAL CONTRACT VALUE RS. 180000.00
Zero Only

(Rupees One Lakh Eighty Thousand And Paise

only)

Completion Period
10.10.2017

For Tata Hitachi Construction Machinery Company Limited

Security Money

CC: Indentor Finance Division supplier O/C

8808 3380 408

AUTHORISED SIGNATORY

09/09/17

KHARAGPUR - 721 301

(REGD. OFFICE : JUBILEE BUILDING, 45, MUSEUM ROAD, BANGALORE - 560025)

WORK ORDER

M/S. TLC ENGINEERING CONSULTANT

Code: T836805

WORK ORDER NO. RGP171833

DATE 03.09.2017

ENQ. NO. QWO/

DATE

BUDGET CODE TK16075

B.C. NO.

PROJECT CODE PB/TC/1833

West Bengal India. PIN: 700063

Please contact..... within **TWO DAYS** on receipt of this **WORK ORDER** and start work, in accordance with the agreed programme drawnout in consultation with him. Kindly obtain safety clearance before starting the job

The following shall be deemed to form, read & be interpreted as part of the whole agreement :-

(a) The specifications, Bill of Quantities & Drawings. (b) The General Terms and Condition of Contract of Tata Hitachi. (c) The special Terms & Condition of Contracts of Tata Hitachi for Civil (Town) / Civil (Works) / Electrical / Mechanical / Structural, as applicable to this work order. (d) The Safety/Security Rules and Regulation of THCM.

The final bill must be submitted within 60 days after completion of the job. The executing department will forward the bill to **Manager (Finance)** directly along with your performance report. The Work Order No. must be quoted in all correspondence.

JOB DESCRIPTION

SL	ITEM NO.	QTY	RATE/UNIT	TOTAL IN INR
----	----------	-----	-----------	-----------------

Work contract for services
for the design stability of building
projects of the following areas :

1. At center bay of Wheeled assy shop.
2. At road equipment assembly shop.
3. Under slung crane girder stability
at west side of Attachment paint shop.

Scope of work

1. GA drawings for modification portion;
2. Design calculation & report;
3. Detail structural drawings for
modification portion;
4. Detail BOQ for modification portion;

Payment terms :

50% on submission of all design drawings

40% on submission of balance as per the

scope of work and remaining 10% to be paid after completion of the project.

Safety is the Highest priority in **Tata Hitachi**. Wearing of Safety Helmet & Shoes inside the works & the use of **PPE** is must while working.

TOTAL CONTRACT VALUE RS. 474000.00
Paise Zero Only

(Rupees Four Lakh Seventy Four Thousand And
only)

Completion Period
10.10.2017

For Tata Hitachi Construction Machinery Company Limited

Security Money

CC: Indentor Finance Division supplier O/C

8808 3380 408

AUTHORISED SIGNATORY

04/09/17

TATA HITACHI CONSTRUCTION MACHINERY COMPANY PRIVATE LIMITED

RUPNARAYANPUR, KHARAGPUR - 721 301

(REGD. OFFICE : JUBILEE BUILDING, 45, MUSEUM ROAD, BANGALORE - 560025)

WORK ORDER

M/S. Compa TLC ENGINEERING CONSULTANT		Code: T83680S	
		WORK ORDER NO. KGP192635	DATE 29.11.2019
22 VIVEKANANDA PARK THAKURPUKAR		ENQ. NO. QWO/	DATE
KOLKATA		BUDGET CODE TK18122/1	B.C. NO. 3965
PIN: 700063 West Bengal India.		PROJECT CODE PK/2635	

Please contact.....within **TWO DAYS** on receipt of this **WORK ORDER** and start work, in accordance with the agreed programme drawnout in consultation with him. Kindly obtain safety clearance before starting the job

The following shall be deemed to form, read & be interpreted as part of the whole agreement :-

(a) The specifications, Bill of Quantities & Drawings, (b) The General Terms and Condition of Contract of Tata Hitachi, (c) The special Terms & Condition of Contracts of Tata Hitachi for Civil (Town) / Civil (Works) / Electrical / Mechanical / Structural, as applicable to this work order, (d) The Safety/Security Rules and Regulation of THCM.

The final bill must be submitted within 60 days after completion of the job. The executing department will forward the bill to **Manager (Finance)** directly along with your performance report. The Work Order No. must be quoted in all correspondence.

JOB DESCRIPTION

SL ITEM NO.	QTY	RATE/UNIT	TOTAL IN INR
ITEM DESCRIPTION			
1 Work contract for services doing the design & drawing for civil foundation of the following machines for LMS & Fabrication Complex 1. Layout of Machine Foundations for 5th , 6th, 7th, 8th Bay 2. Layout of Machine Foundations for LMS 3. Civil Foundation Drawing Sawing Machine, Area-Tool Room 4. Vertical Milling Machine, Area-Tool Room 5. External Grinding Machine, Area-Tool Room 6. Civil Foundation Drawing Compressor 7. Civil Foundation Drawing Dust Collector, Area-Fabn.	618000.000 NOS	1.00	618000.00

P.S. : Bills to be certified only on removal of all scraps / debris generated during the execution of the order on the scrap yard low lying area or as per the advice of the executing department.

Safety is the Highest priority in **Tata Hitachi**, Wearing of Safety Helmet & Shoes inside the works & the use of **PPE** is must while working.

TOTAL CONTRACT VALUE RS.

(Rupees

only)

Completion Period

For Tata Hitachi Construction Machinery Company Private Limited

Security Money

CC : Indentor Finance Division Supplier O/C

H. Vemur
f AUTHORIZED SIGNATORY

TATA HITACHI CONSTRUCTION MACHINERY COMPANY PRIVATE LIMITED

RUPNARAYANPUR, KHARAGPUR - 721 301

(REGD. OFFICE : JUBILEE BUILDING, 45, MUSEUM ROAD, BANGALORE - 560025)

WORK ORDER

M/S. <u>Compa TLC ENGINEERING CONSULTANT</u>		Code: <u>T835805</u>	
		WORK ORDER NO. <u>KGP192635</u>	DATE <u>29.11.2019</u>
<u>22 VIVEKANANDA PARK</u>		ENQ. NO. QWO/	DATE
<u>THAKURPUKAR</u>			
<u>KOLKATA</u>		BUDGET CODE <u>TK18122/1</u>	B.C. NO. <u>3965</u>
PIN : <u>West Bengal India. 700063</u>		PROJECT CODE <u>PK/2635</u>	

Please contact.....within **TWO DAYS** on receipt of this **WORK ORDER** and start work, in accordance with the agreed programme drawnout in consultation with him. Kindly obtain safety clearance before starting the job

The following shall be deemed to form, read & be interpreted as part of the whole agreement :-

(a) The specifications, Bill of Quantities & Drawings, (b) The General Terms and Condition of Contract of Tata Hitachi, (c) The special Terms & Condition of Contracts of Tata Hitachi for Civil (Town) / Civil (Works) / Electrical / Mechanical / Structural, as applicable to this work order, (d) The Safety/Security Rules and Regulation of THCM.

The final bill must be submitted within 60 days after completion of the job. The executing department will forward the bill to **Manager (Finance)** directly along with your performance report. The Work Order No. must be quoted in all correspondence.

JOB DESCRIPTION

SL ITEM NO.	QTY	RATE/UNIT	TOTAL IN INR
ITEM DESCRIPTION			
9. Civil Foundation Drawing NEC(X) - 10, Area-LMS			
10. Civil Foundation Drawing Nigata - 80 D, Area-LMS			
Scope of Work;			
1. Making of GA Drawing			
2., Design Calculation			
3. Detail Drawing			
4. Detail BOQ of Civil Work			
5. Bar Bending Schedule of Civil Items as per attached Annexure.			
Payment terms :			
50 % on Submission of all drawing,			
40 % submission on scope of work.			
10 % after completion of the project.			
Taxes are as applicable			

P.S. : Bills to be certified only on removal of all scraps / debris generated during the execution of the order ton the scrap yard low lying area or as per the advice of the executing department.

Safety is the Highest priority in **Tata Hitachi**, Wearing of Safety Helmet & Shoes inside the works & the use of **PPE** is must while working.

TOTAL CONTRACT VALUE RS. 618000.00 **(Rupees)** Six Lakh Eighteen Thousand And Paise
Zero Only **only)**

Completion Period

Ref No- TLQ/Q-84/1

For Tata Hitachi Construction Machinery Company Private Limited

Security Money

CC : Indentor Finance Division Supplier O/C

M. Ullman
AUTHORISED SIGNATORY

Reliable solutions

TO, SUPPLIER CODE : T83680CS Compa TLC ENGINEERING CONSULTANTS		PURCHASE ORDER NO. KGP21402 DATE : 12.07.2021	
KOLKATA West Bengal India. PIN : 700063		YOUR REFERENCE : THCM/Planning/21-22/KGP/402	
Please deliver the following materials subject to the terms & conditions specified in the P.O. to Tata Hitachi Construction Machinery Company Pvt. Ltd (THCM), Kharagpur.			
MODE OF DESPATCH FOR-KGP.	DELIVERY TERMS FOR-KGP.	DELIVERY SCHEDULE One month from receipt of WO.	P&F CHARGES Included
TRANSIT INSURANCE : Included		FREIGHT CHARGES Included	
TAXES : EXCISE DUTY: SALES TAX: GST as applicable		L.D Clause: 0.5% per week < (> 5% max.	DISCOUNT Included
PAYMENT TERMS : 50% on submission of all design drawings; 40% on submission of detail drawings; 10% to be paid after completion of the project		WARRANTY TERMS One Year	
SL	ITEM NO.	QTY	RATE/UNIT
	ITEM DESCRIPTION		TOTAL IN Rs.
1	Work contract for services for the design and detail engineering drawing of PDI shed of size (15 m x 30 m x 10.175 m height) at THCM, Kharagpur Plant.	180000.000	1.00
	Scope of work :	RS	
	1) GA drawings of shed & civil foundation;		
	2) Design calculation of shed & civil foundation;		
	3) Fabrication drawings;		
	4) Detail of foundation drawings;		
	5) Detail BOQ of civil & structural items;		
	6) Bar bending schedule of civil items.		
	Payment terms :		
	50% on submission of all design drawings;		
	40% on submission of detail drawings;		
	10% to be paid after completion of the project		
	Taxes are as applicable.		
	MD (THCM's) Approval vide ESR No. PB/KGP/402		
	Date: 07.06.2021		
SPECIAL INSTRUCTIONS		FOR Tata Hitachi Construction Machinery Co. Pvt. Ltd.	
1.Challan/Invoice/Bill/Delivery Note must bear the Purchase Order ref.			
2.Bills/Invoices in ORIGINAL must be sent to our Planning/Finance unless otherwise specified.			
3.For any enquiry, please quote PO ref.			
4.Excise Invoice, Transporter copy of Excise Invoice should be furnished for Excisable items.			

PDI SHED

HEAD FACILITY PLANNING

Our Excise No.3207020702, LST NO. 4011833-2, CST No. 4016833-5

Reliable solutions

TO, Compa TLC ENGINEERING CONSULTANTS	SUPPLIER CODE : T83680CS	PURCHASE ORDER NO. KGP21404 DATE : 12.07.2021
KOLKATA West Bengal India. PIN : 700063		YOUR REFERENCE : THCM/Planning/21-22/KGP/404

Please deliver the following materials subject to the terms & conditions specified in the P.O. to Tata Hitachi Construction Machinery Company Pvt. Ltd (THCM), Kharagpur.

MODE OF DESPATCH	DELIVERY TERMS FOR-KGP	DELIVERY SCHEDULE One Month after receipt of WO.	P&F CHARGES Included
TRANSIT INSURANCE : Included		FREIGHT CHARGES Included	
TAXES : EXCISE DUTY: SALES TAX: GST as applicable.	L.D Clause: 0.5% per week < (> 5% max.	DISCOUNT Included	

PAYMENT TERMS : 50% on submission of all design drawings; 40% on submission of detail drawings; 10% to be paid after completion of the project

WARRANTY TERMS
One year.

SL	ITEM NO.	QTY	RATE/UNIT	TOTAL
	ITEM DESCRIPTION			IN Rs.
1	Work contract for services for the design and detail engineering drawing of shed for Vibration bench of size (16.8 m x 10.9 m x 8.0 m height) at THCM, Khargapur Plant.	175000.000	1.00	175000.00
	Scope of work:			
	1) GA drawings of shed & civil foundation;			
	2) Design calculation of shed & civil foundation;			
	3) Fabrication drawings; 4) Detail of foundation drawings;			
	5) Detail BOQ of civil & structural items;			
	6) Bar bending schedule of civil items;			
	7) GA drawing of machine foundation;			
	8) Provide stability certificate after completion of work.			
	Payment terms :			
	50% on submission of all design drawings;			
	40% on submission of detail drawings;			
	10% to be paid after completion of the project			
	Taxes are as applicable.			
MD (THCM's)	Approval vide ESR No. PB/KGP/404			
	Date: 08.06.2021			

**VIBRATION
BENCH SHED**

SPECIAL INSTRUCTIONS	FOR Tata Hitachi Construction Machinery Co. Pvt. Ltd.
1.Challan/Invoice/Bill/Delivery Note must bear the Purchase Order ref.	
2.Bills/Invoices in ORIGINAL must be sent to our Planning/Finance unless otherwise specified.	
3.For any enquiry, please quote PO ref.	
4.Excise Invoice, Transporter copy of Excise Invoice should be furnished for Excisable items.	

HEAD FACILITY PLANNING

Our Excise No.3207020702, LST NO. 4011833-2 , CST No. 4016833-5

Reliable solutions

TO, SUPPLIER CODE : T83680CS Compa TLC ENGINEERING CONSULTANTS		PURCHASE ORDER NO. KGP21413 DATE : 12.07.2021	
KOLKATA West Bengal India. PIN : 700063		YOUR REFERENCE : THCM/Planning/21-22/KGP/413	
Please deliver the following materials subject to the terms & conditions specified in the P.O. to Tata Hitachi Construction Machinery Company Pvt. Ltd (THCM), Kharagpur.			
MODE OF DESPATCH FOR-KGP.	DELIVERY TERMS FOR-KGP.	DELIVERY SCHEDULE One month after WO	P&F CHARGES Included
TRANSIT INSURANCE : Included		FREIGHT CHARGES Included	
TAXES : EXCISE DUTY: SALES TAX: GST as applicable.		L.D Clause: 0.5% per week < (> & 5% max.	DISCOUNT Included
PAYMENT TERMS : 50% on submission of all design drawings; 40% on submission of detail drawings; 10% to be paid after completion of the project		WARRANTY TERMS One Year	
SL ITEM NO.	ITEM DESCRIPTION	QTY	RATE/UNIT
			TOTAL IN Rs.
1	Work contract for services for the design and detail engineering drawing of QA Testing shed of size (13 m x 30 m x 13.85 m height) at THCM, Kharagpur Plant.	250000.000	1.00
		RS	250000.00
		TOTAL----->	250000.00
Scope of work : 1) GA drawings of shed & civil foundation; 2) Design calculation of shed & civil foundation; 3) Fabrication drawings; 4) Detail of foundation drawings; 5) Detail BOQ of civil & structural items; 6) Bar bending schedule of civil items. 7) Stability certificate after completion of work. Payment terms : 50% on submission of all design drawings; 40% on submission of detail drawings; 10% to be paid after completion of the project Taxes are as applicable. MD (THCM's) Approval vide ESR No. PB/KGP/413 Date: 10.06.2021			
SPECIAL INSTRUCTIONS			
FOR Tata Hitachi Construction Machinery Co. Pvt. Ltd.			
1.Challan/Invoice/Bill/Delivery Note must bear the Purchase Order ref.			
2.Bills/Invoices in ORIGINAL must be sent to our Planning/ Finance unless otherwise specified.			
3.For any enquiry, please quote PO ref.			
4.Excise Invoice, Transporter copy of Excise Invoice should be furnished for Excisable items.			

qa testing shed

HEAD FACILITY PLANNING

Our Excise No.3207020702, LST NO. 4011833-2, CST No. 4016833-5

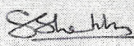
Page No.: 1/1

TATA HITACHI CONSTRUCTION MACHINERY COMPANY PRIVATE LIMITED

RUPNARAYANPUR, KHARAGPUR - 721 301

(REGD. OFFICE : JUBILEE BUILDING, 45, MUSEUM ROAD, BANGALORE - 560025)

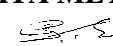
WORK ORDER

M/S. Corporation Engineering Consultant		Code: T836808	
		WORK ORDER NO. KGP184143	DATE 14.10.2018
22 VIVEKANANDA PARK THAKURPUR KOLKATA		ENQ. NO. QWO/	DATE
		BUDGET CODE TK18122/1	B.C. NO.
PIN: West Bengal India. 700063		PROJECT CODE PK/TL/4143	
<p>Please contact..... within TWO DAYS on receipt of this WORK ORDER and start work, in accordance with the agreed programme drawnout in consultation with him. Kindly obtain safety clearance before starting the job</p> <p>The following shall be deemed to form, read & be interpreted as part of the whole agreement :- (a) The specifications, Bill of Quantities & Drawings. (b) The General Terms and Condition of Contract of Tata Hitachi. (c) The special Terms & Condition of Contracts of Tata Hitachi for Civil (Town) / Civil (Works) / Electrical / Mechanical / Structural, as applicable to this work order. (d) The Safety/Security Rules and Regulation of THCM.</p> <p>The final bill must be submitted within 60 days after completion of the job. The executing department will forward the bill to Manager (Finance) directly along with your performance report. The Work Order No. must be quoted in all correspondence.</p>			
JOB DESCRIPTION			
SL	ITEM NO. ... ITEM DESCRIPTION	QTY	RATE/UNIT TOTAL IN INR
1	Work contract for services for the design & drawing for civil foundation of the following machines for LMS. 1. HOFER- HELIX 400, 2. WIDMA, 3. TOYODA SEAL QUENCH FURNACE 650 KG, 3. SEAL QUENCH FURNACE 1000 KG & 1 PSN. Scope of Work: 1. Making of GA Drawing 2., Design Calculation 3. Detail Drawing 4. Detail BOQ of Civil Work 5. Bar Bending Schedule of Civil Items as per attached Annexure. PSN. Bill to be certified only on removal of all scraps / debris generated during the execution of the order ton the scrap yard low lying area or as per the advice of the executing department drawing, <u>Safety is the Highest priority in Tata Hitachi.</u> Wearing of Safety Helmet & Shoes inside the works & the use of <u>PPE</u> is must while working.	1.000 SET	408000.00 408000.00
TOTAL CONTRACT VALUE RS.		(Rupees only)	
Completion Period		For Tata Hitachi Construction Machinery Company Private Limited <div style="text-align: center;">  AUTHORISED SIGNATORY </div>	
Security Money			
CC :	Indentor Finance Division Supplier O/C		

Quotation No.: Date:	Purchase Order Page 1 of 30
Your Vendor Number with us : T01690	No. : 5100000309 Date : 14.03.2020 Division: DI
Vendor Address TLC ENGINEERING CONSULTANTS HO 22 VIVEKANANDA PARK KOLKATA 700063 TELE : 03324972134 , E-MAIL : technicalluminary@gmail.com	Contact Regd. PO: Mr. Sitaram Wadkar Mobile: +918420002290 Email ID: sitaram.wadkar@tatametaliks.co.in PLEASE SUPPLY THE FOLLOWING GOODS / SERVICES ACCORDING TO THE TERMS, CONDITIONS & INSTRUCTION SPECIFIED HEREON OVERLEAF & ATTACHED. ALL GOODS SHOULD BE CONSIGNED TO THE TATA METALIKS LTD, KHARAGPUR Internal Committee Members (Posh) Jacqueline Leavers: jackie.leavers@tatametaliks.co.in Contact No. 9163440629 Dilith Castleton : dilith.castleton@tatametaliks.co.in ContactNo. 9073352091
Deliever to : TATA METALIKS LIMITED works at Kharagpur Any purchase related grievances are to be sent to: purchase.grievance@tatametaliks.co.in	GSTIN No : 19AABCT1389B1ZF PAN No. : AABCT1389B

SL. NO.	MATERIAL NO.	DESCRIPTION	QUANTITY	UOM	UNIT RATE
Header 00010		Design&Drawaing of Pump House for 4LTPA	1.000	AU	490000.00
The item covers the following Services					
10		Design&Drawaing of Pump House for 4LTPA	1.000	JOB	490000.00
		CGST Rate (%): 9.00 SGST Rate (%): 9.00 Scope of work: I. Pump house, II. Electrical room, III. Cold well tanks, IV. Make up water tank, V. Drinking water tank, VI. Fire water reservoir, Our deliverables are as follows; · Preparation of design calculation; · Preparation of General arrangement drawings; · Preparation of detail construction drawings; · Preparation of BOQ of structural <(>&<)> civil items; · Preparation of BBS for civil jobs. · Preparation of Structural Fabrication Drawing.			
		Delivery Date : 15.04.2020			
		SUGGESTION MANAGEMENT SCHEME FOR VENDORS : WE RECOGNIZE THE VENDORS FOR THE SUGGESTION GIVEN AND IMPLEMENTED BY THEM .			

AMOUNT(in words) : Four Lakh Ninety Thousand Rupees (in INR)	Total	490,000.00
---	--------------	-------------------

TML recognizes their vendors as one of their most important stakeholders. In order to make us "Better/quicker/easier" in our business, we solicit suggestions from our vendors so as to improve our processes/product/engg./improved substitution/alternative source/ alternative service levels. Please send your suggestions to purchase.tml@tatametaliks.co.in	Please feel free to contact with our ethics counselor for any ethical issue :- Mr. Subhra Sengupta. Email: ethics.counsellor@tatametaliks.co.in Whistle Blowing Hotline Service Toll Free Number: 1 800 103 2931 Access Code: 26791 URL: www.intouchfeedback.com/TML
Packing&Forwarding:	For TATA METALIKS LIMITED  (Authorised Signatory)
Incoterms:	
W.C.T/ TDS /Others Taxes: As applicable	
Inspection Clause :	
Payment Terms : 100 %within 15 days	

Quotation No.: Date:	Purchase Order Page 1 of 32		
Your Vendor Number with us : T01690	No. : 5100001272 Date : 11.10.2022 Division: PI		
Vendor Address TLC ENGINEERING CONSULTANTS HO 22 VIVEKANANDA PARK KOLKATA 700063 TELE : 03324972134 , E-MAIL : technicalluminary@gmail.com	Contact Regd. PO: Mr. Sitaram Wadkar Mobile: +918420002290 Email ID: sitaram.wadkar@tatametaliks.co.in		
	PLEASE SUPPLY THE FOLLOWING GOODS / SERVICES ACCORDING TO THE TERMS, CONDITIONS & INSTRUCTION SPECIFIED HEREON OVERLEAF & ATTACHED. ALL GOODS SHOULD BE CONSIGNED TO THE TATA METALIKS LTD, KHARAGPUR Internal Committee Members (Posh) Dilith Castleton : dilith.castleton@tatametaliks.co.in ContactNo. 9073352091		
Deliver to : TATA METALIKS LIMITED works at Kharagpur Any purchase related grievances are to be sent to: purchase.grievance@tatametaliks.co.in	GSTIN No : 19AABCT1389B1ZF PAN No. : AABCT1389B		

SL. NO.	MATERIAL NO.	DESCRIPTION	QUANTITY	UOM	UNIT RATE
Header 00010		Preparation of 3D Modeling	1.000	AU	1000000.00
The item covers the following Services					
10		Preparation of 3D model for CCM-9	1.000	JOB	500000.00
20		Preparation of 3D model for CCM-10	1.000	JOB	500000.00
		CGST Rate (%): 9.00 SGST Rate (%): 9.00			
		1. Scope of work: Our scope of work for the above job is as follows: · CCM 9 m/c presentable outer model in STP + NWD format. · CCM 10 m/c presentable outer model in STP + NWD format. · Core Transport system (ASRS) for robot movement for core lifting and fixing on machine for CCM 9 and CCM 10 · Mould shifting and positioning movement for CCM 9 and CCM 10 · Site visit to collect dimension if required. · Project review meeting. · 3D model in NWD format. Progressive nwd file weekly basis. Final 3D model in nwd and stp format. 2. Technical <(>&<)> General conditions: · We will revise our drawings/ documents up to 10% due to change of your general arrangement drawings free of cost. · More than 10% modification of our drawings due to change of your decision/ modification of your drawings, will be charged extra. · Any cancellation of our drawings/ documents submitted or in progress, due to change of your decision, will be charged extra. · We'll submit soft copies of the model in NWD format. · CREO software shall be used for modelling.			
		Delivery Date : 20.11.2022			
SUGGESTION MANAGEMENT SCHEME FOR VENDORS : WE RECOGNIZE THE VENDORS AMOUNT(in words) : Ten Lakh Rupees (Rs.10,00,000/-) FOR THE SUGGESTION GIVEN AND IMPLEMENTED BY THEM.					Total 1,000,000.00

TML recognizes their vendors as one of their most important stakeholders. In order to make us "Better/quicker/easier" in our business, we solicit suggestions from our vendors so as to improve our processes/product/engg./improved substitution/alternative source/ alternative service levels. Please send your suggestions to purchase.tml@tatametaliks.co.in

Please feel free to contact with our ethics counselor for any ethical issue :- Mr. Saikat Datta.
Email: ethics.counsellor@tatametaliks.co.in
Whistle Blowing Hotline Service
Toll Free Number: 1800 102 0875
URL: www.in.kpmg.com/ethicsshelpline/tslindia/

Packing&Forwarding:

Incoterms: FH-KGP

W.C.T/ TDS /Others Taxes: As applicable

Inspection Clause :

Payment Terms : 15 Days Credit

For TATA METALIKS LIMITED

(Authorised Signatory)

Quotation No.: Date:	Purchase Order Page 1 of 31	
Your Vendor Number with us : T01690	No. : 5100001450	Date : 14.02.2023 Division: DI
Vendor Address TLC ENGINEERING CONSULTANTS HO 22 VIVEKANANDA PARK KOLKATA 700063 TELE : 03324972134 , E-MAIL : technicalluminary@gmail.com	Contact Regd. PO: Mr. Sitaram Wadkar Mobile: +918420002290 Email ID: sitaram.wadkar@tatametaliks.co.in	
	PLEASE SUPPLY THE FOLLOWING GOODS / SERVICES ACCORDING TO THE TERMS, CONDITIONS & INSTRUCTION SPECIFIED HEREON OVERLEAF & ATTACHED. ALL GOODS SHOULD BE CONSIGNED TO THE TATA METALIKS LTD, KHARAGPUR Internal Committee Members (Posh) Dilith Castleton : dilith.castleton@tatametaliks.co.in ContactNo. 9073352091	
Deliever to : TATA METALIKS LIMITED works at Kharagpur Any purchase related grievances are to be sent to: purchase.grievance@tatametaliks.co.in	GSTIN No : 19AABCT1389B1ZF PAN No. : AABCT1389B	

SL. NO.	MATERIAL NO.	DESCRIPTION	QUANTITY	UOM	UNIT RATE
Header 00010		Engineering Consultancy	1.000	AU	230000.00
The item covers the following Services					
10		Engg. Consultancy for sand reclamation	1.000	NO	230000.00
		CGST Rate (%): 9.00 SGST Rate (%): 9.00 Scope of Work in Engineering Consultancy of Sand Reclamation also include:- 1. Engineering as per RFQ 2. Vetting of equipments, Structural drawings, civil drawings etc. Scope of work: Our scope of work for the above job is as follows; · Preparation of design calculation of steel shed; · Preparation of GA drawings of shed; · Preparation of detail drawings of shed; · Preparation of BOQ for the shed; · Preparation of bolt list for the shed; · Preparation of design calculation of civil foundation; · Preparation of GA drawings of civil portion; · Preparation of detail drawings of civil portion; · Preparation of BBS of civil items; Delivery Date : 28.02.2023			
SUGGESTION MANAGEMENT SCHEME FOR VENDORS : WE RECOGNIZE THE VENDORS FOR THE SUGGESTION GIVEN AND IMPLEMENTED BY THEM .					
"Tata Metaliks does not pay or encourage to pay any bribe, speed money or facilitation payment by itself or by any of its associates in relation to business of Tata Metaliks. Acceptance and offering of gifts and hospitalities should be strictly as per company policies. Any deviation would be dealt with stringent consequences. report any concern to the Ethics Counsellor/Compliance Officer (Company Secretary)"					

TML recognizes their vendors as one of their most important stakeholders. In order to make us "Better/quicker/easier" in our business, we solicit suggestions from our vendors so as to improve our processes/product/engg./improved substitution/alternative source/ alternative service levels. Please send your suggestions to purchase.tml@tatametaliks.co.in	Please feel free to contact with our ethics counselor for any ethical issue :- Mr. Saikat Datta. Email: ethics.counsellor@tatametaliks.co.in Whistle Blowing Hotline Service Toll Free Number: 1800 102 0875 URL: www.in.kpmg.com/ethics helpline/tslindia/
Packing&Forwarding:	For TATA METALIKS LIMITED  (Authorised Signatory)
Incoterms: FH-KGP	
W.C.T/ TDS /Others Taxes: As applicable	
Inspection Clause :	
Payment Terms : Payment due 30 days	



EAST CALCUTTA GIRLS' COLLEGE, LAKE TOWN

NAAC ACCREDITED 'GRADE B' on March 2015

A Degree College, affiliated to State University, Barasat, West Bengal

P-237, BLOCK-'B', LAKE TOWN-LINK ROAD, KOLKATA-700 089

PHONE : 2534-8039 / 2521-0154, Fax : 033-2534 8039

E-mail : principalecgc@gmail.com / ecgc_principal@rediffmail.com Web : www.ecgcweb.com

E.C. G.C. / L.T./ 145/55/2018

Date: 06.07.2018

To
Mr. Anup Kumar Dutta
TLC Engineering Consultants
22 Vivekananda Park
Kolkata- 700063

Ref.No. : TLC/Q-13/2018-2019

Sub: Order for design and detail engineering of single
storied (structural & civil) College building

Dear Sir,

This has reference to the letter no. TLC/ Q-13/2018-2019 dated 5th July, 2018 for the above job.

We are very much pleased to inform you that we accept your offer.

We hope you do according to scope of work at an early date.

Thanking you,

Yours faithfully,

Sukla Hazra 6/7/18

Dr.(Mrs.) Sukla Hazra
(PRINCIPAL)

Principal
East Calcutta Girls' College
Lake Town, Kol - 700 089



Sl. #: 156/2016-2017

Dated: 08/02/2017

THE KOLKATA MUNICIPAL CORPORATION
9/1A, A.J.C. BOSE ROAD, CAL- 700 017.

Standard Form of Work Order (Provn.)
Office Of The Executive Engineer - BR VII

From :: Executive Engineer - VII
9/1A, A.J.C. BOSE ROAD, KOL- 17

C.R.No. -> 2610

To :- TLC ENGINEERING CONSULTANTS
22, VIVEKANANDA PARK

Sub: Prep.of D P R Incd. Soil Testing (2 Nos. Bore Holes, Struc-
Tural Design, Architectural View Etc) For The Proposed G-iv
Storied Br-vii Office Buldg.at 9/1 A, A J C Bose Rd, Kol-17

Dear Sir

Your tender/quotation dt. 20/09/2016 from the above work has since
been accepted by Hon'ble Mayor, on 28/10/2016.
You are hereby requested to contact N KADER, A.E.(C) in-charge
of the work on for taking up the work and further advice.
You will have to complete the works within stipulated time. The date of
completion shall be reckoned from the date of handling over the side

If not executed earlier, You have to execute
the agreement before start of the work. No final payment can
be released without execution of agreemental work. You are to take licence
from the office of the Labour Commissioner, Govt. of West Bengal, New Secretariat
Bldg.(11th Floor), Cal-1. if you are under the purview of the labour regulation
& abolition rule, 1972.

Yours Faithfully,

Executive Engineer - VII.

I-----				I-----
I Estimated Amount	:	Rs.	150000.00	(Inclu./Exclu. Contin.)
I-----				I-----
I Tender Amount	:	Rs.	150000.00	(Do)
I-----				I-----
I Rate quoted	:		0.00% Above/Below	
I-----				I-----
I Sanctioned Amount	:	Rs.	150000.00	(Do)
I-----				I-----
I Time Of Completion:			60Days	
I-----				I-----
I Code No	:		8924-800	
I-----				I-----

Copy To :: 1. I.T.C.
2. Sales Tax Commissioner
3. Labour Commissioner, W.B.New Sectt. Bldg.(11th Floor),
1, K.S.Roy Road., Calcutta - 1.
4. The Asstt. Engr.(C) Wd.No.063
5. The Chief Municipal Auditor, K.M.C.
6. D.G. (Civil)

[Signature]
Dy. C.E. (Civil) Ex. Engr. (Civil)
Borough - VII

The Kolkata Mpl. Corpn. VII

Executive Engineer



Sl. #: 168/2016-2017

Dated: 21/02/2017

THE KOLKATA MUNICIPAL CORPORATION
9/1A, A.J.C. BOSE ROAD, CAL- 700 017.

Standard Form of Work Order (Provn.)
Office Of The Executive Engineer - BR VII

From :: Executive Engineer - VII
9/1A, A.J.C. BOSE ROAD, KOL- 17

C.R.No. -> 5296

To :- TLC ENGINEERING CONSULTANTS
22, VIVEKANANDA PARK

Sub: Preparation Of Dpr Includ. Soil Testing (one Bore Hole Depth
30 M) Structural Plan And Design With Architechral View For
Construction Of New Uphc At 2 Dhapa Rd Kol-105, Br-vii

Dear Sir

Your tender/quotation dt. 28/09/2016 from the above work has since
been accepted by Dy.C.E.(CIVIL), on 21/10/2016.
You are hereby requested to contact A DAFTARY, A.E.(C) in-charge
of the work on for taking up the work and further advice.
You will have to complete the works within stipulated time. The date of
completion shall be reckoned from the date of handling over the side

If not executed earlier, You have to execute
the agreement before start of the work. No final payment can
be released without execution of agreemental work. You are to take licence
from the office of the Labour Commissioner, Govt. of West Bengal, New Secretariat
Bldg. (11th Floor), Cal-1. if you are under the purview of the labour regulation
& abolition rule, 1972.

Yours Faithfully,

Executive Engineer - VII.

I-----					I-----
I Estimated Amount	:	Rs.	125000.00	(Inclu./Exclu. Contin.)	I
I-----					I-----
I Tender Amount	:	Rs.	125000.00	(Do)	I
I-----					I-----
I Rate quoted	:		0.00% Above/Below		I
I-----					I-----
I Sanctioned Amount	:	Rs.	125000.00	(Do)	I
I-----					I-----
I Time Of Completion:			60Days		I
I-----					I-----
I Code No	:		6114-800		I
I-----					I-----

Copy To :: 1. I.T.C.
2. Sales Tax Commissioner
3. Labour Commissioner, W.B. New Sectt. Bldg. (11th Floor),
1, K.S. Roy Road., Calcutta - 1.
4. The Asstt. Engr. (C) Wd. No. 058
5. The Chief Municipal Auditor, K.M.C.
6. D.G. (Civil)

[Signature]
Dy. C.E. (Civil) Ex. Engr. (Civil)
Borough - VII
The Kol. Mpl. Corpn.
Executive Engineer - VII

[Signature]
21/2/17
HCB

Flender Drives Pvt Ltd.

309/2, "A" Block , Chettipattu Village, Thandalam Post
Sriperumbudur Taluk, Kancheepuram Dist - 602105
Tel: 044 6135 4000 PAN: AAECF2019F Website: www.flender.com

TLC Engineering Consultants

24, Vivekananda Park

Thakurpukur

700063 Kolkata

India

STATE CODE: 19

State Name: West Bengal

GSTN: 19ACMPD7499N1ZL

PAN: not provided.

Attn: Mr. Anup Dutta

PHONE: 033 24972134

This Purchase Order ("PO") is subject to the agreed terms and conditions. All goods or services shall be delivered in accordance. In order to comply with international export regulations, wherever applicable, every invoice shall state related ECCN or AL number for the good(s) or product(s) supplied.

Please deliver to
Flender Drives Pvt Ltd.
Industrial Growth Centre, Nimpura,
Kharagpur - 721301
India
POS: 19

Order No. 4500002355	Date 11.02.2021	Your Vendor No. with us 50135626	Your reference	Directors Interest
---------------------------------------	---------------------------	--	-----------------------	---------------------------

References	Our Org-ID A1207750	GBK	Contact Gautam Ghosh, IN FLE IN FIN P Phone +91 (3222) 300375 E-mail gautam.ghosh@siemens.com
-------------------	-------------------------------	------------	---

Invoice Address Flender Drives Pvt Ltd. Industrial Growth Centre, Nimpura, Kharagpur - 721301 Bill To GSTIN: 19AAECF2019F1ZX Place of Supply: 19 Note: Domestic suppliers must directly send duly signed E-invoices to generic email address: <u>apsixscanning.in@siemens.com</u>	Incoterms DAP Kharagpur Mode of Dispatch Recipient Part delivery Partial delivery allowed Delivery date 30 Sep 2021 Payment Terms Within 45 days frm acceptance(GRN)of goods/service
--	---

Item	Description of Goods / Service	Quantity / Unit	Currency / Price unit INR	Total Price INR
00010	Drawing & Design of HT shop Expansion IN: Central GST 9.00 % IN: State GST 9.00 % Item Category Service The item covers the following services: Drawing & Design of HT shop Expansion	1.000 Activ.unit	545,000.00	545,000.00 49,050.00 49,050.00
00020	Site visit Charges IN: Central GST 9.00 % IN: State GST 9.00 %	1 each 1.000 Activ.unit	545,000.00 100,000.00	545,000.00 100,000.00 9,000.00 9,000.00

Remarks	Scope of work for the above job is as follows: A. Existing maintenance building:
----------------	---

--	--

Note: Tax Invoice along with valid E-waybill should accompany the consignment. Two tax invoice should be sent along with consignment wherein following details are essential to process your invoice for payment purpose. i) ECC No. ii)Your GSTIN No. iii)Supplier Code iv) Purchase Order No. v) Item No. vi) Description vii) Quantity viii) HSN / SAC of the supply .
PAN not furnished - TDS if applicable will be deducted @20%

Flender Drives Pvt Ltd.

309/2, "A" Block , Chettipattu Village, Thandalam Post
Sriperumbudur Taluk, Kancheepuram Dist - 602105
Tel: 044 6135 4000 PAN: AAECF2019F Website: www.flender.com

TLC Engineering Consultants

24, Vivekananda Park

Thakurpukur

700063 Kolkata

India

STATE CODE: 19

State Name: West Bengal

Order No.
4500002355

Date
11 Feb 2021

Item	Description of Goods / Service	Quantity / Unit	Currency / Price unit INR	Total Price INR
	<p>Item Category Service</p> <p>The item covers the following services:</p> <p>Site Visit Charges</p> <p>Total net value incl. tax INR</p> <p>Amount in words:</p> <p>Rupees Seven Lakh Sixty One Thousand One Hundred Only</p>	10 each	10,000.00	<p>100,000.00</p> <p>761,100.00</p>

Remarks Scope of work for the above job is as follows:
A. Existing maintenance building:

Responsible FLE KGP Consumabl
FLE Ind PD 18 Feb 2021 10:15:10
Date of printout Time of printout

Prabir Kumar Roy Natarajan
Theerthagiri
12 FEB 2021 15:03:36 18 FEB 2021 08:45:09

**This is a computer generated PO and
does not require a signature.**

Note: Tax Invoice along with valid E-waybill should accompany the consignment. Two tax invoice should be sent along with consignment wherein following details are essential to process your invoice for payment purpose. i) ECC No. ii)Your GSTIN No. iii)Supplier Code iv) Purchase Order No. v) Item No. vi) Description vii) Quantity vii) HSN / SAC of the supply .
PAN not furnished - TDS if applicable will be deducted @20%

Flender Drives Pvt Ltd.

309/2, "A" Block , Chettipattu Village, Thandalam Post
Sriperumbudur Taluk, Kancheepuram Dist - 602105
Tel: 044 6135 4000 PAN: AAECF2019F Website: www.flender.com

TLC Engineering Consultants

24, Vivekananda Park

Thakurpukur

700063 Kolkata

India

STATE CODE: 19

State Name: West Bengal

GSTN: 19ACMPD7499N1ZL

PAN: not provided.

Attn: Mr. Anup Dutta

PHONE: 033 24972134

This Purchase Order ("PO") is subject to the agreed terms and conditions. All goods or services shall be delivered in accordance. In order to comply with international export regulations, wherever applicable, every invoice shall state related ECCN or AL number for the good(s) or product(s) supplied.

Please deliver to
Flender Drives Pvt Ltd.
Industrial Growth Centre, Nimpura,
Kharagpur - 721301
India
POS: 19

Order No. 4500002757	Date 24.02.2021	Your Vendor No. with us 50135626	Your reference	Directors Interest
--------------------------------	--------------------	-------------------------------------	----------------	--------------------

References	Our Org-ID A1207750	GBK	Contact Gautam Ghosh, IN FLE IN FIN SCM OP-WIND Phone +91 (3222) 300375 E-mail gautam.ghosh@siemens.com
------------	------------------------	-----	--

Invoice Address Flender Drives Pvt Ltd. Industrial Growth Centre, Nimpura, Kharagpur - 721301 Bill To GSTIN: 19AAECF2019F1ZX Place of Supply: 19 Note: Domestic suppliers must directly send duly signed E-invoices to generic email address: <u>apsixscanning.in@siemens.com</u>	Incoterms DAP Kharagpur Mode of Dispatch Recipient Part delivery Partial delivery allowed Delivery date 30 Mar 2021 Payment Terms Within 45 days frm acceptance(GRN)of goods/service
--	---

Item	Description of Goods / Service	Quantity / Unit	Currency / Price unit INR	Total Price INR
00010	Soil Testing for Construction IN: Central GST 9.00 % IN: State GST 9.00 % Item Category Service The item covers the following services: Soil testing for HT shop construction wo	1.000 Activ.unit	140,000.00	140,000.00 12,600.00 12,600.00
		2 Activ.unit	70,000.00	140,000.00

Remarks

Note: Tax Invoice along with valid E-waybill should accompany the consignment. Two tax invoice should be sent along with consignment wherein following details are essential to process your invoice for payment purpose. i) ECC No. ii)Your GSTIN No. iii)Supplier Code iv) Purchase Order No. v) Item No. vi) Description vii) Quantity viii) HSN / SAC of the supply .
PAN not furnished - TDS if applicable will be deducted @20%

Flender Drives Pvt Ltd.

309/2, "A" Block , Chettipattu Village, Thandalam Post
Sriperumbudur Taluk, Kancheepuram Dist - 602105
Tel: 044 6135 4000 PAN: AAECF2019F Website: www.flender.com

TLC Engineering Consultants

24, Vivekananda Park

Thakurpukur

700063 Kolkata

India

STATE CODE: 19

State Name: West Bengal

Order No.
4500002757

Date
24 Feb 2021

Item	Description of Goods / Service	Quantity / Unit	Currency / Price unit INR	Total Price INR
	Total net value incl. tax INR Amount in words: Rupees One Lakh Sixty Five Thousand Two Hundred Only			165,200.00

Remarks
Responsible

FLE Ind PD

FLE KGP Consumabl

25 Feb 2021 17:12:15

Date of printout Time of printout

Saurav Mukherjee

Dinesh Balaji L

25 FEB 2021 11:31:59

25 FEB 2021 15:42:15

**This is a computer generated PO and
does not require a signature.**

Note: Tax Invoice along with valid E-waybill should accompany the consignment. Two tax invoice should be sent along with consignment wherein following details are essential to process your invoice for payment purpose. i) ECC No. ii)Your GSTIN No. iii)Supplier Code iv) Purchase Order No. v) Item No. vi) Description vii) Quantity vii) HSN / SAC of the supply .
PAN not furnished - TDS if applicable will be deducted @20%



Regd. Office : Bengal Eco Intelligent Park, Tower-1, 3rd Floor, Block-EM, Plot No.-3, Salt Lake City, Sector-V, Kolkata-700091,
Tel : + 91-33-71122334/2445
Plant : Vill. & P.O. Bhuniarachak, Via.: Sutahata (Haldia), Purba Midnapore, West Bengal 721 635. India.
Tel : + 91-3224-275572/73, Fax : + 91-3224-275574/272015
website : www.mcpi.co.in
Business Place Code.. : HAL1, Business Place Name. : PRIVATE LIMITED
GSTIN Number of the Business Place.. : 19AAACM9169K1ZU
CIN No. : U24299WB1997PTCO88796

PAGE: 1 / 12

TLC Engineering Consultants 22 Vivekananda Park Kolkata - 700 063 Concerned Person: TEL: 033 24972134/ FAX: GSTIN Number of the Invoicing Party. : 19ACMPD7499N1ZL GSTIN Number of the Main Vendor. : 19ACMPD7499N1ZL	Purchase Order No. 7400000026	Purchase Order Date 07.04.2021
	Amendment No.	Amendment Date
	Vendor Code No. 1000000030	Purchase Request No. 0010066380
Bank: AXIS BANK LIMITED, BEHALA BRANCH, MICR:700211009 BK ACC. No. 034010200020174	Quotation No.	Quotation Date 06.04.2021

Please supply the following materials/services as per terms and conditions mentioned below.

Item	Material Code Description	Quantity Unit	Unit Price Delivery Date	Amount INR
A1	PX pipeline extension at OT-2	1.000 AU	30.04.2022	
00010	S9004 Preparation of Tender Specifications	1.000 EA	49,500.00	49,500.00
	BILLING	IN: Central GST 9 %		4,455.00
	DONE-100%-67/21-22	IN: State GST 9 %		4,455.00
00020	S9004 Technical & commercial bid evaluation	1.000 EA	54,000.00	54,000.00
	BILLING	IN: Central GST 9 %		4,860.00
	DONE-100%-77/21-22	IN: State GST 9 %		4,860.00
00030	S9004 Assisting Owner to finalize contract(s)	1.000 EA	27,000.00	27,000.00
	BILLING	IN: Central GST 9 %		2,430.00
	DONE-100%-77/21-22	IN: State GST 9 %		2,430.00
00040	S9004 Conduction route survey & alignment dwg	1.000 EA	31,500.00	31,500.00
	BILLING	IN: Central GST 9 %		2,835.00
	DONE-100%-16/22-23			

PAGE: 2 / 12

Purchase Order No. 7400000026		Purchase Order Date 07.04.2021		Supplier's name TLC Engineering Consultants	
Item	Material Code Description	Quantity Unit	Unit Price Delivery Date	Amount INR	
			IN: State GST 9 %	2,835.00	
	1. To be included as an optional item. 2. Topographic survey only. No subterranean mapping required. 3. Included in Part-A (if required for tender)				
00050	S9004	1.000	202,500.00	202,500.00	
	Civil & Mech design as per code & stnds EA				
	BILLING DONE-100%-38/21-22 & 67/21-22		IN: Central GST 9 %	18,225.00	
			IN: State GST 9 %	18,225.00	
	ASME, ASTM & BIS Codes & Standards				
00060	S9004	1.000	256,500.00	256,500.00	
	Preparation of working dwg for const EA				
	BILLING DONE-100%-38/21-22 & 67/21-22		IN: Central GST 9 %	23,085.00	
			IN: State GST 9 %	23,085.00	
00070	S9004	1.000	63,000.00	63,000.00	
	As built dwg & documentation EA				
	BILLING DONE-100%-26/22-23		IN: Central GST 9 %	5,670.00	
			IN: State GST 9 %	5,670.00	
00080	S9004	1.000	250,000.00	250,000.00	
	Des. validate & Liaso of PESO&Dock safetyEA				
	BILLING DONE-100%-67/21-22 & 77/21-22		IN: Central GST 9 %	22,500.00	
			IN: State GST 9 %	22,500.00	
00090	S9004	10.000	13,600.00	136,000.00	
	Inspect. serv. for pipe,fitting etc EA				
			IN: Central GST 9 %	12,240.00	
			IN: State GST 9 %	12,240.00	
00100	S9004	6.000	138,333.00	829,998.00	
	Sr Piping Engg (supervision&QC) EA				
			IN: Central GST 9 %	74,699.82	
			IN: State GST 9 %	74,699.82	




PAGE: 3 / 12

Purchase Order No. 7400000026		Purchase Order Date 07.04.2021		Supplier's name TLC Engineering Consultants	
Item	Material Code Description	Quantity Unit	Unit Price Delivery Date	Amount INR	
00110	S9004	6.000	100,000.00	600,000.00	
	Civil Engg (supervision&QC)	EA			
		IN: Central GST 9 %		54,000.00	
		IN: State GST 9 %		54,000.00	
	Scope of Work - Engineering Consultancy including Supervision of Construction for 18" Pipeline Extension for OT2 inside Haldia Dock Complex at Haldia port. Detailed scope of work attached alongwith Purchase Order.				
	Payment Terms - Payment shall be made on prorated basis against submission of Invoice.Payment shall be made on actual basis (wherever applicable).				
	Job to be executed within schedule as attached alongwith Purchase Order.				
	Kickoff meeting to be done within 7 working days of receipt of Purchase Order.				
	Terms and conditions attached forms an integral part of this Purchase Order.				
	Consignee - MCPI Private Limited Vill. and P.O. Bhuniaraichak(>,<)> Via Sutahata (Haldia)<(>,<)> Purba Medinipur West Bengal 721635				



PAGE: 4 / 12

Purchase Order No. 7400000026		Purchase Order Date 07.04.2021		Supplier's name TLC Engineering Consultants	
Item	Material Code Description	Quantity Unit	Unit Price Delivery Date	Amount INR	
		Net Amount		2,499,998.00	
		Total CGST		224,999.82	
		Total SGST		224,999.82	
		Total IGST		0.00	
		Total CESS		0.00	
		Total REVERSE CGST		0.00	
		Total REVERSE SGST		0.00	
		Total REVERSE IGST		0.00	
		Freight		0.00	
		Insurance		0.00	
		Other Charges		0.00	
		GST on Other Charges		0.00	
		Gross Amount		2,949,997.64	
Incoterms: FOR MCPI Haldia			Packaging:		
Payment Terms: V901 As per Special Instruction					
Transporter/Forwarder:			Despatch/Deliver to: MCPI Haldia PLANT		
Additional Terms & Conditions:					
Special Instruction Payment Terms - As per remarks					
Seller: Acknowledged and accepted			Buyer: MCPI Private Limited.  Release Date: 07.04.2021		
----- Authorized Signature			----- Authorized Signature		



NICCO PARKS & RESORTS LIMITED

Page 47 of 58

JHEEL MEEL, SECTOR IV, SALT LAKE CITY, KOLKATA - 700 106

Phone : 6628-5523/ 5560 / 5588, Fax No. : (91) 33 2357-2116, E-mail : niccopark@niccoparks.com

PURCHASE / WORK ORDER

Order Number : PROJECT-DIMAPUR / 0639/1718W

Date 29/06/2017

To T L C - ENGINEERING CONSULTANTS.
22, Vivekananda Park, Vivekananda College Road, Kolkata - 700 063.

Please enter this as an order for the following stores offered as per your quotation Ref. No.

Dated Bills to be submitted duly supported by Receipted Challans.

Code	Material Specification/ Job Description				Value
J001	SL-1 Preparation of Design and G A & detail drawings for Dimapur Project for following facilities :- Boundary Wall, Entry Gate 1&2 (Small), VIP Gate, Ticket Counter, Admin Block, Path Way, Parking 1&2, Food Court, Plaza, Water Park Facility, Wire House / Store Room, Substation 1&2, Banquet Hall (pre Coated Sheet at OP) with Kitchen, Lake, Jetty, Under Ground Drain, Cable Trench, Horror House Building Rs.9,20,000/-				920000.00
TOTAL Rs.					920000.00

GRAND TOTAL Rs. 920,000.00

* Price is Firm / Ruling at the time of delivery. SUPPLY / JOB WORK NOT COMPLETED WITHIN 7 DAYS AFTER EXPY. OF DELIVERY SCHEDULE WILL BE DEEMED AS CANCELLED.

PACKING

Each package should be marked as **NICCO PARKS & RESORTS LTD.**
USE OF ENVIRONMENT FRIENDLY PACKAGING PREFERRED / ENCOURAGED.

DESPATCH

DELIVERY SCHEDULE

ACCEPTANCE / REJECTION

30/09/2017

Supplies not in accordance with our specifications are liable to be rejected and should be replaced at your cost & expenses. Delivery schedule to be strictly maintained.

ACKNOWLEDGEMENT

PAYMENT TERMS

SPECIAL INSTRUCTION

PLACE OF USE

Please send back order acceptance immediately per return.

20% advance against P/ Invoice, 50% on submission

of G A Drg. on prorata basis, 30% on submission of detail drg. on pratata basis

Proj. Dimapur
Taxes as applicable

TERMS AND CONDITIONS OF THE ORDER

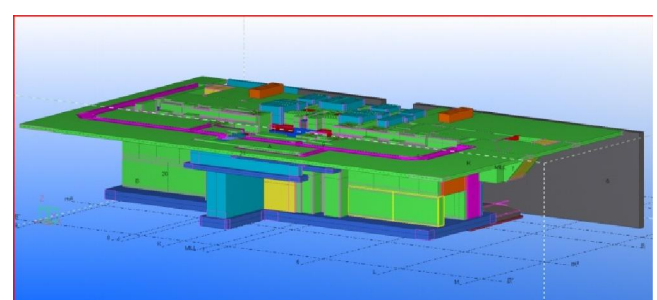
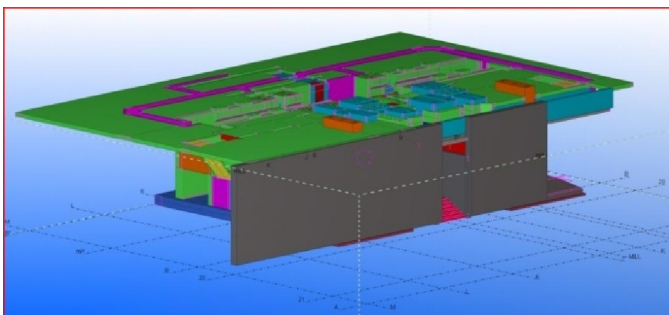
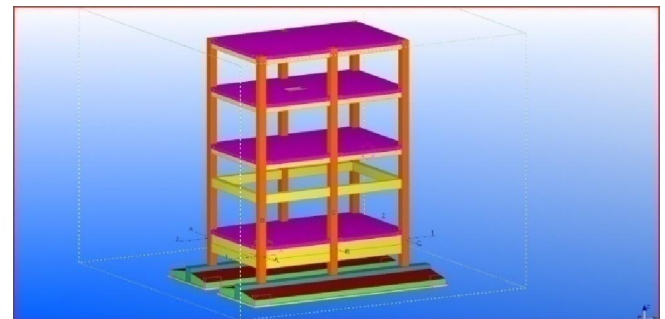
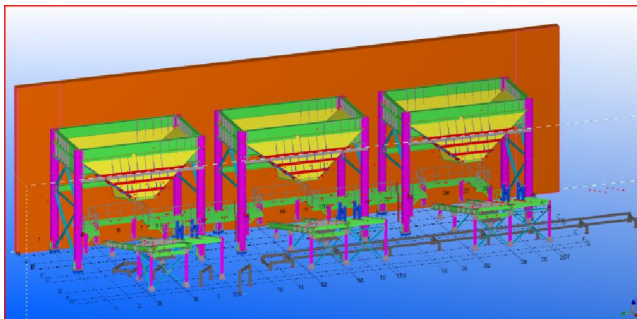
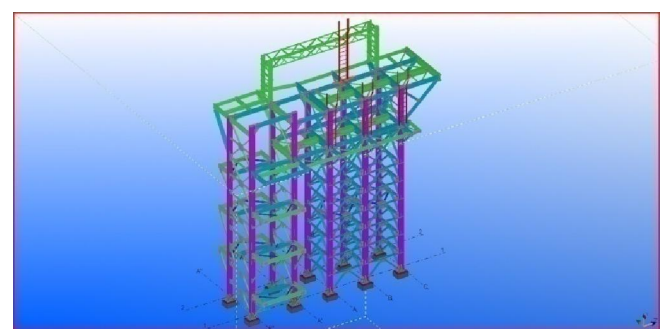
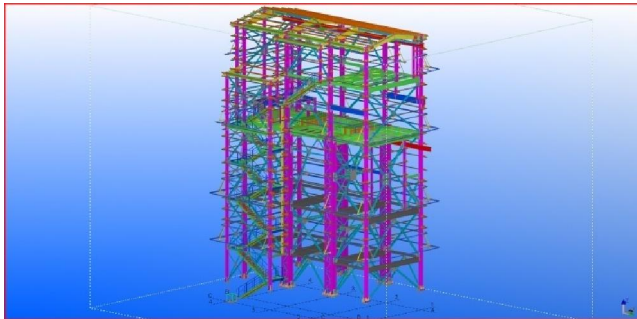
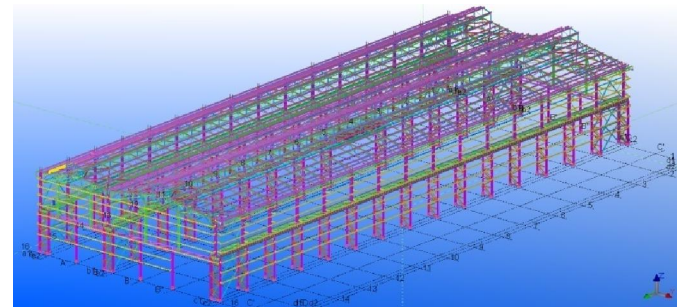
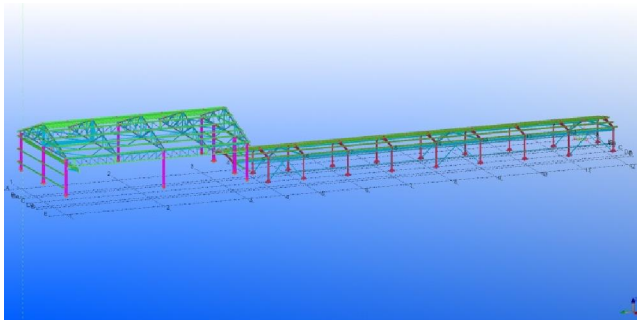
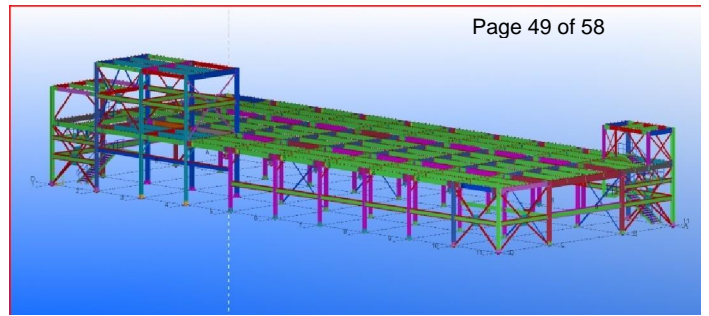
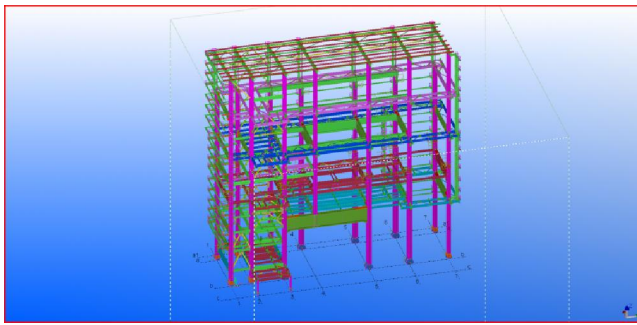
1. Unless otherwise specified all stores ordered should be delivered in full within the time specified.
2. Quote our Order Number and Material Code in all bills, Delivery Challan etc.
3. Failure to comply with any of the terms of the order will render the order liable to cancellation and procurement of items from elsewhere without any further reference to you.
4. Statutory Deductions as per current Govt. Norms.
5. PAN, VAT/ CST/ WBST / PF/ ESI / Service Tax Regn Nos. which are applicable must be mentioned on the Bill.

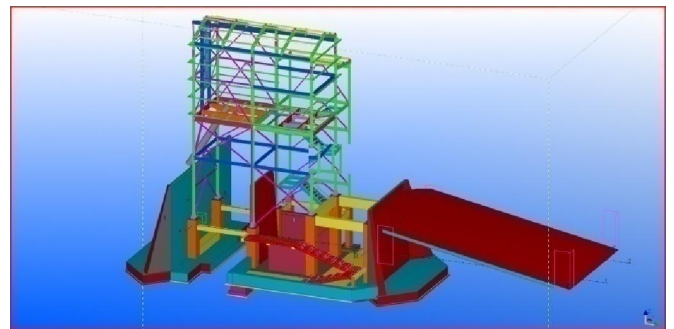
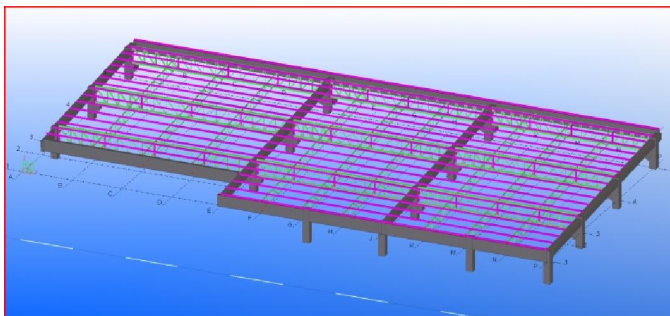
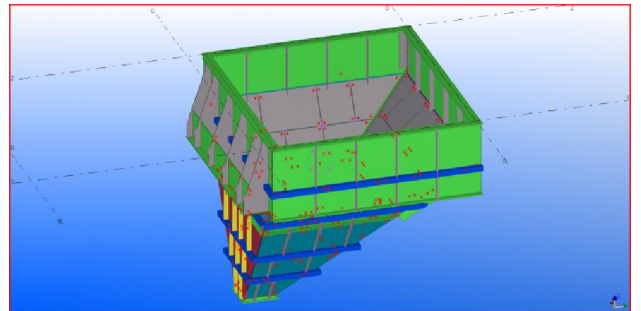
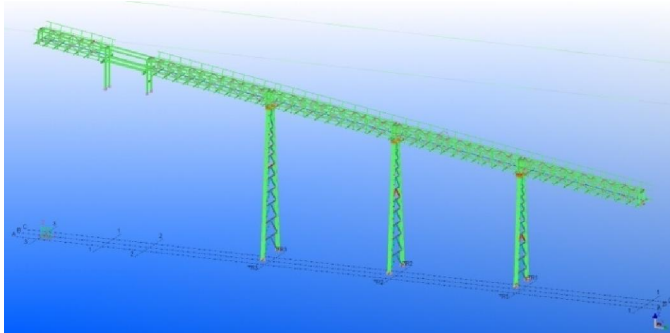
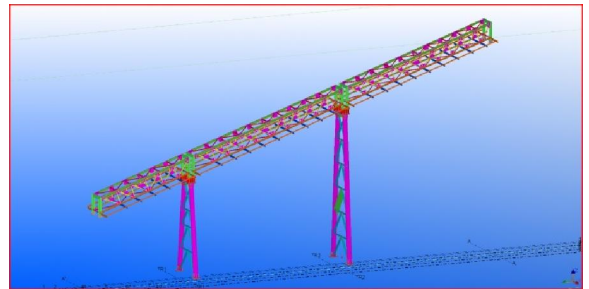
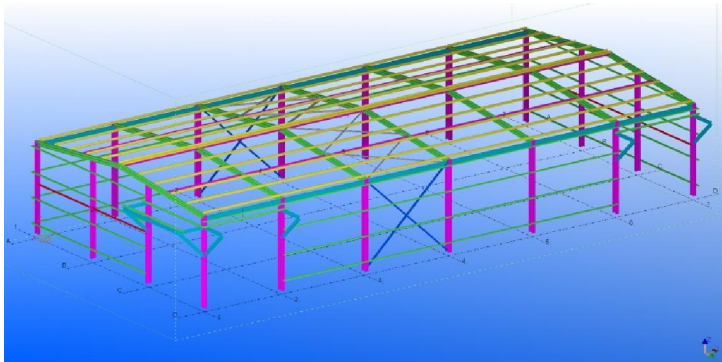
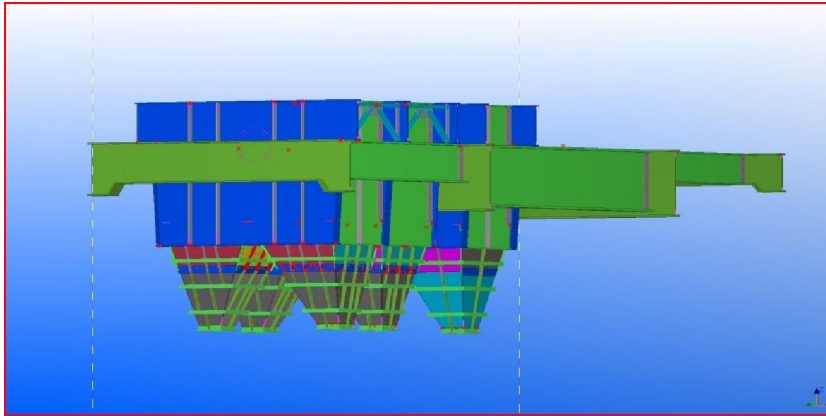
CIN-L92419WB1989PLC046487

For NICCO PARKS & RESORTS LIMITED

Authorised Signatory

SOME SNAPS OF OUR 3D MODEL WORK





SOME PHOTOGRAPHS OF PROJECTS HANDLED BY TLC ENGINEERING CONSULTANTS



DESIGN AND DETAIL ENGINEERING OF THICKENER

Vendor Number: T01690 P.O. No.: 5100000399 Date:18.08.2020 Division: PI

CLIENT- TATA METALIKS LTD.



DESIGN AND DETAIL ENGINEERING OF COOLING TOWER

Vendor Number: T00088 Date: 25.01.2016 SO.NO.: 6502373

CLIENT- TATA METALIKS LTD.

**SOME PHOTOGRAPHS OF PROJECTS HANDLED BY TLC ENGINEERING
CONSULTANTS**

GIRIDIH



DESIGN, DETAIL ENGINEERING AND SITE SUPERVISION OF FOIL PLANT IN TOTALITY

client: Shree Venkateshwara Electrocast Pvt. Ltd.
W.O. No.: SVECPL/PUR/2012-13/032, DATED 12.05.2012

**SOME PHOTOGRAPHS OF PROJECTS HANDLED BY TLC ENGINEERING
CONSULTANTS**

CHARKOLE



**DESIGN, DETAIL ENGINEERING AND SITE SUPERVISION OF RESIDENTIAL TOWER AT KALIMPONG
DISTRICT**

client: QUADRANS CONSORTIA

**SOME PHOTOGRAPHS OF PROJECTS HANDLED BY TLC ENGINEERING
CONSULTANTS**

DAKGHAR



DESIGN ,DETAIL ENGINEERING AND SITE SUPERVISION OF GLASS FACTORY IN TOTALITY

client: M/S GLAZE ARCHITECTURE PVT LTD. BAGANI PARA. MOYNAGORE. ASHUTI.

**SOME PHOTOGRAPHS OF PROJECTS HANDLED BY TLC ENGINEERING
CONSULTANTS**

METSO



DESIGN AND DETAIL ENGINEERING OF CRUSHING AND SCREENING PLANT

client: M/S-Metso Outotec India Private Limited.1st floor, DLF Building No. 10, Tower A, DLF Cybercity Phase-II, Gurgaon-122002, Haryana, India

**SOME PHOTOGRAPHS OF PROJECTS HANDLED BY TLC ENGINEERING
CONSULTANTS**

MASYC



DESIGN AND DETAIL ENGINEERING OF CRUSHING AND SCREENING PLANT

client: MASYC PROJECTS PVT. LTD.

**SOME PHOTOGRAPHS OF PROJECTS HANDLED BY TLC ENGINEERING
CONSULTANTS**

EAST CALCUTTA GIRLS COLLEGE



DESIGN, DETAIL ENGINEERING AND CONSTRUCTION SUPERVISION OF COLLEGE BUILDING (18600 Sq. Ft)

client: EAST CALCUTTA GIRLS COLLEGE

**SOME PHOTOGRAPHS OF PROJECTS HANDLED BY TLC ENGINEERING
CONSULTANTS**

EMPIRE



**DESIGN AND DETAIL ENGINEERING OF CIVIL FOUNDATION AND PIPING FOR INSTALLATION OF NEW
GUILLOTINE SHEAR AT PLATE MILL BSP**

client: EMPIRE INDUSTRIAL EQUIPMENT